

# THANK YOU FOR HAVING YOUR SAY ON THE CHOISEUL TOWNSHIP CLIMATE CHANGE PROJECT !

Community Booklet – March 2014





# THANK YOU FROM THE PROJECT TEAM

In January 2014, project team members (Lyn, Simon and Kylie) from the 'Choiseul Township Climate Change Project' visited Taro Island and surrounding communities to get your input into this important project.

The team enjoyed their time in the Solomon Islands and would like to thank everyone, particularly the Choiseul Provincial Government, for making the trip a great success!

This booklet provides a summary of the engagement program, the information that was collected and the next steps for the project.



Choiseul Provincial Government workshop



# WHAT IS THE CHOISEUL TOWNSHIP CLIMATE CHANGE PROJECT?

The aim of the Choiseul Township Climate Change Project is to prepare a plan that will:

- Show how climate change hazards may affect Taro Island and the future expansion area now and in the future;
- Make recommendations about how to protect the community and valuable areas from climate change hazards; and
- Guide how and when development should happen in the future expansion area.

A lot of work has already been done by the Solomon Islands Government and Choiseul Provincial Government and some development has started to happen. This work will be taken into account in the Choiseul Township Climate Change Project.



Talking to community members at Supizae

## WHAT THE PROJECT TEAM DID DURING THEIR VISIT IN JANUARY

During their time in Solomon Islands, the project team:

- Participated in a workshop with the Choiseul Provincial Government
- Held information sessions near the Taro Market
- Participated in a community workshop with the Taro Island community
- Visited Supizae, Poroporo, Moli and Nukiki to talk to community members in nearby villages
- Hosted a movie night
- Met with Solomon Islands Government in Honiara

In total, the project team spoke to over 200 community members!

The purpose of this visit was to understand what is important to community members, government representatives and NGOs about Taro Island and the future expansion area.



# WHAT FEEDBACK DID THE PROJECT TEAM RECEIVE?

## Feedback about the project

- Generally people felt pleased to hear that the project is being done and are eager to move to an area on the mainland that is safe from climate change impacts and tsunami.
- Community members wanted to be involved.

## Important areas and values

- Areas that have environmental importance – conservation areas, mangroves, the reef, the creek on Taro and the Sui River;
- Places that provide valuable natural resources – fishing areas, mangroves, food gardens, places where stones can be collected and where building materials can be found;
- Buildings and infrastructure providing a critical service to the province – the hospital, airstrip, telekom, generator, businesses, fuel storage, employment, bank, waste disposal and provincial government services;
- Other buildings and structures important for the health and wellbeing of the community – churches, schools, swimming areas, picnic areas, soccer field, residences and the market.

**The locations of these important areas and values are shown on the following pages.**



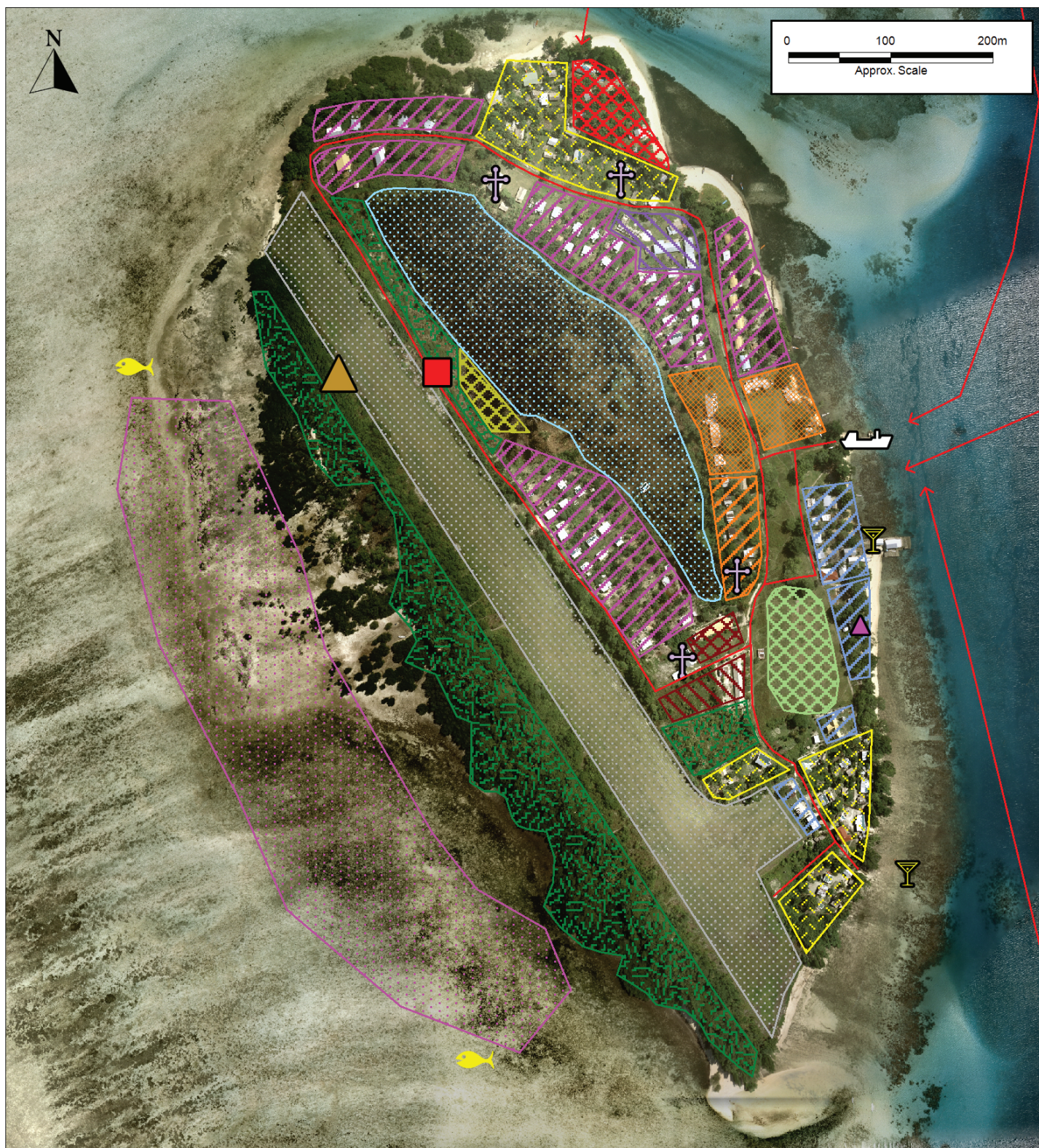
## Vision for the new township

- The township should be a 'green' town and have public areas for recreation, sport, parks and trees;
- The township has to be clean with a waste disposal area that is separate from the town;
- Services and infrastructure should be available before development such as water supply, sewage management and good road connections;
- The provincial capital should be the 'face' of Choiseul; and
- Land and resources in the new township need to be fairly distributed.

## Comments about the future expansion area

- The new township has to be safe from natural hazards such as sea level rise and tsunami.
- Some people thought it would be better to develop the town inland from the mangroves. To provide protection from coastal hazards. Others thought that the possibility of reclaiming land along the coastline should be investigated.
- Identify a suitable and secure place to store boats.
- The port requires good access to deep water and protection from wind and waves.
- A road connecting to nearby villages is needed so that people can get around easily.
- If more land were available (compared to Taro Island) more people would choose to live in the capital and develop businesses.





## LEGEND

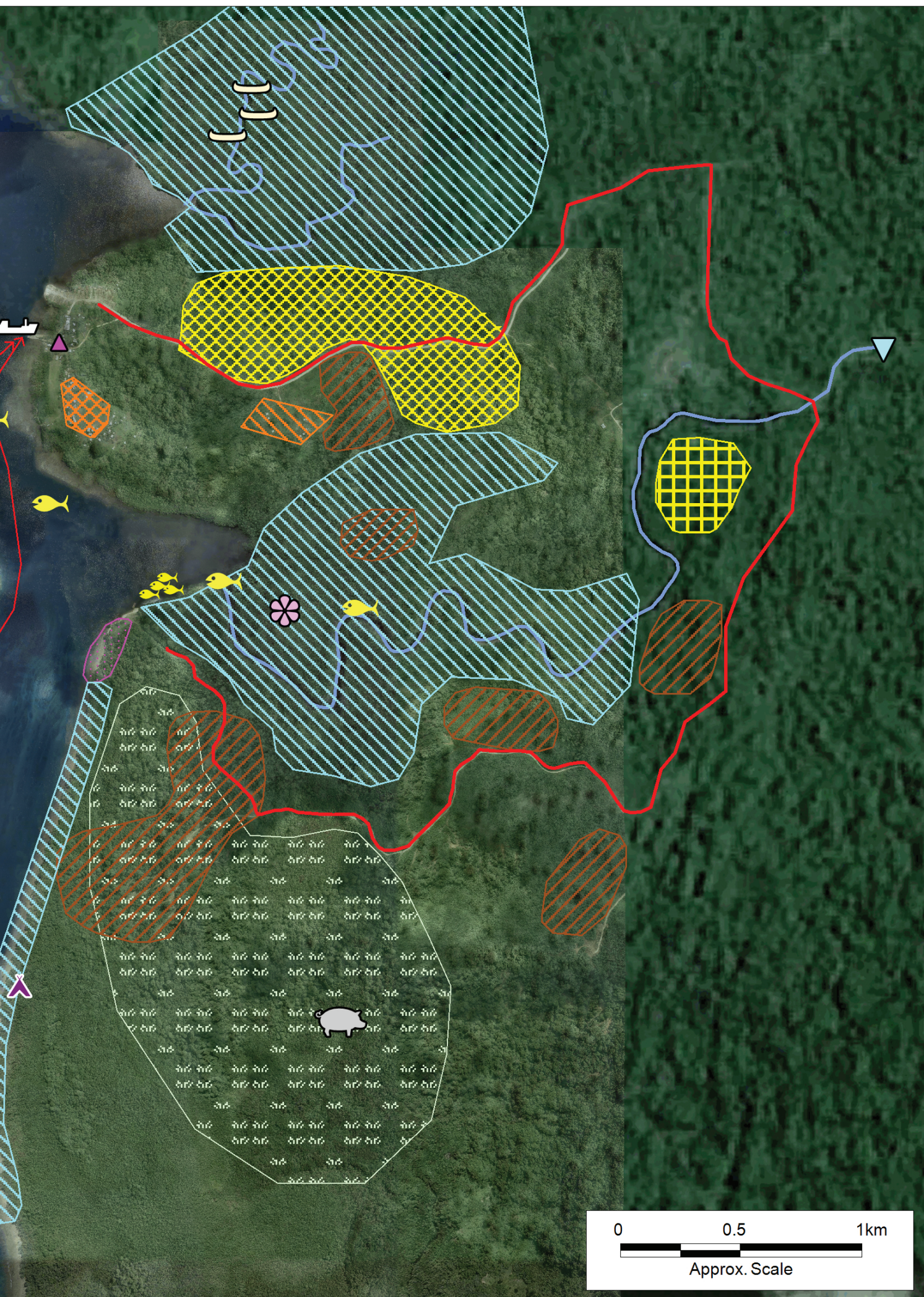
	Wharf		Commercial		Airstrip
	Bar		Mixed Residential / Commercial		Sports Complex
	Market		Gardens		Mosquito Creek
	Fishing		Primary School		Hospital
	Church		Residential		Fuel Storage & Light Industry
	Medical Incinerator		Waste Disposal		CPG Administration
	Powerhouse		Stone Collection		Government Housing
	Transport Routes		Conservation Area		Pre-school

Taro Map - Important Areas Mapped by the Community











# NEXT STEPS

The project team will visit Taro Island again to seek your input at various stages of the project. The purpose of each visit will be:

## January visit (completed)

- Discuss climate change and tsunami hazards and how these might impact Taro Island and the future expansion area.
- Find out about the places, buildings and infrastructure important to the community.

## PROJECT TEAM:



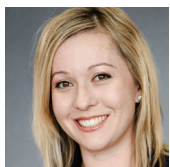
**Lyn Leger**  
Environmental Consultant



**Simon Albert**  
Scientist



**Kylie Rolley**  
Town Planner



**Shannon McGuire**  
Town Planner

## March visit

- Discuss places, buildings and infrastructure that are most at risk from climate change, and what to do about to these impacts.
- Present information about the land features of the future expansion area that need to be taken into account in the planning.
- Seek feedback on a draft concept plan for the future expansion area.

## May visit

Discuss and seek feedback on the draft plan which will include:

- Options for what can be done to minimise climate change risks on Taro Island; and
- A draft plan for how the future expansion area could be developed.

