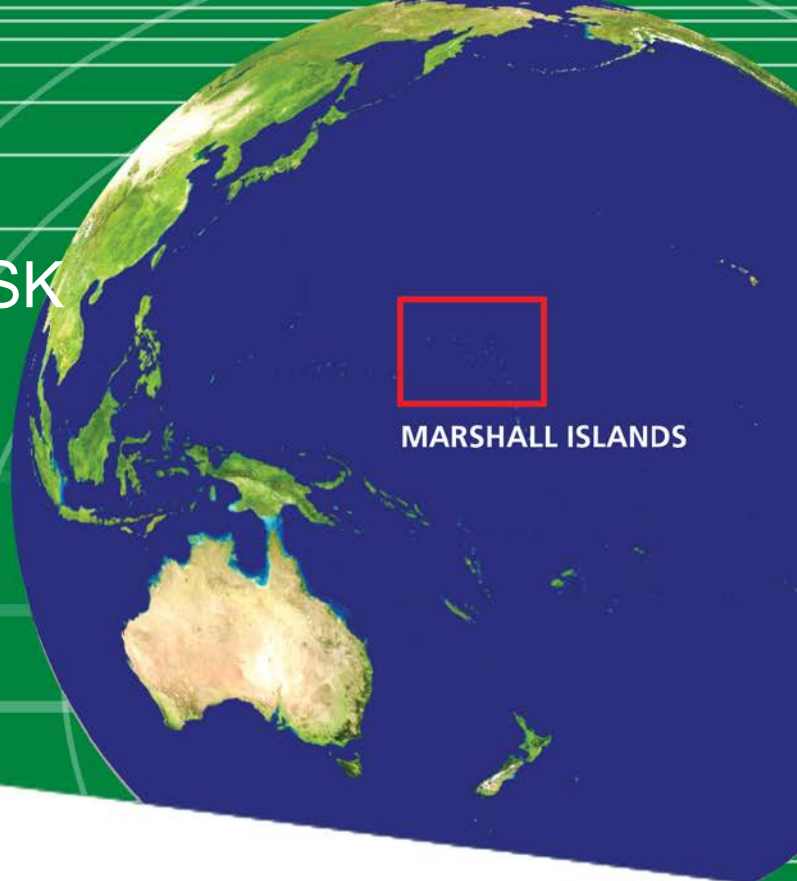


CURRENT AND FUTURE TROPICAL CYCLONE RISK IN THE SOUTH PACIFIC



COUNTRY RISK PROFILE: MARSHALL ISLANDS

JUNE 2013

- *The Marshall Islands have been affected by devastating cyclones on multiple occasions, e.g. in 1991 and 1992 tropical cyclones Zelda, Axel and Gay and in 1997 tropical cyclone Paka. The current climate average annual loss due to tropical cyclones represents about 1.9% of the country's GDP.*
- *Future climate projections indicate there will be small changes in future losses from tropical cyclones compared to the current climate, with average annual losses increasing slightly by 2050 and decreasing very slightly by 2100.*
- *By 2100, losses from 1-in-50 year cyclones could increase by as much as 47% in the worst case climate change scenario.*
- *The proportion of the population affected by future tropical cyclones is projected to increase slightly compared to the current climate.*
- *The main contributor to current and future building and infrastructure loss is wind, with only minor contributions from storm surge and flood.*
- *The end-of-century wind hazard change is projected to be insignificant.*

Pacific Catastrophe Risk Assessment and Financing Initiative
in collaboration with
Pacific-Australia Climate Change Science and Adaptation Planning Program



PROJECT GOAL

Contributing to the third phase of the Pacific Catastrophe Risk Assessment and Financing Initiative (PCRAFI), this project is supported by the Pacific-Australia Climate Change Science and Adaptation Planning (PACCSAP) Program with co-financing from the Global Fund for Disaster Risk Reduction. The primary goal of the project is to improve understanding of the risks posed by tropical cyclone hazards (winds, floods, and storm surge) to key assets in the Pacific region, under current and future climate scenarios. A clearer understanding of the current level of risk in financial terms - and the way that risk will change in the future - will aid decision makers in prioritising adaptation measures for issues such as land-use zoning, urban infrastructure planning, and ex-ante disaster planning.

EXPOSURE AND POPULATION

The building assets considered in this study include residential, commercial, public, and industrial buildings, while the infrastructure assets include major ports, airports, power plants, bridges and roads. The major crop in the Marshall Islands is coconut.

Table 1: Summary of Population and Exposure in the Marshall Islands (2010)

Total Population	54,800
GDP Per Capita (USD)	2,840
Total GDP (million USD)	155
Total Number of Buildings	12,894
Number of Residential Buildings	11,407
Number of Public Buildings	608
Number of Commercial, Industrial, Other Buildings	879
Hectares of Major Crops	8,601

As estimated and detailed in the previous phase of the project, the replacement value of all assets in the Republic of the Marshall Islands is 1.7 billion USD of which about 83% represents buildings and 17% represents infrastructure. This study did not take into account future economic or population growth. Table 1 includes a summary of the population and exposure in the islands.

AIR TROPICAL CYCLONE MODEL

AIR has developed a South Pacific catastrophe parametric model to evaluate the tropical cyclone risk for 15 countries in the region. Historical data was used to build a stochastic catalogue of more than 400,000 simulated tropical cyclones, grouped in 10,000 potential realisations of the following year's activity in the basin. The catalogue provides a long-term view of tropical cyclone activity in the region. It was built to physically and statistically reflect the most credible view of current risk based on the historical record, including frequency, intensity and track evolution. The model estimates hazard (wind speeds and flooding levels) and damage (losses) for all events in the catalogue.

CURRENT CLIMATE

The Republic of the Marshall Islands is located north of the equator in an area known for the frequent occurrence of tropical cyclones with damaging winds, rains, and storm surge. The Islands have been affected by devastating tropical cyclones several times during the past few decades. For example, tropical cyclone Paka in 1997 caused severe damage to crops and damaged 70% of houses on Ailinglaplap Atoll, with total losses estimated at 80 million USD for the entire nation. Tropical cyclones Zelda, Axel and Gay each caused significant damage and losses within a span of one year (1991-1992).

The country's current tropical cyclone risk profile has been derived from an estimation of the direct losses to buildings, infrastructure, and major crops, as caused by wind and flooding due to rain and storm surge. 'Losses' in this report refers to the direct costs needed to repair or replace damaged assets *plus* the emergency costs that governments may sustain as a result of providing necessary relief and recovery efforts (e.g. debris removal, setting up shelters for those made homeless, or supplying medicine and food).

The average expected losses per calendar year are referred to as the *Average Annual Loss* or AAL (see Appendix). The current climate AAL value is 2.9 million USD. The percentage distribution for the different assets considered is shown in Figure 1.

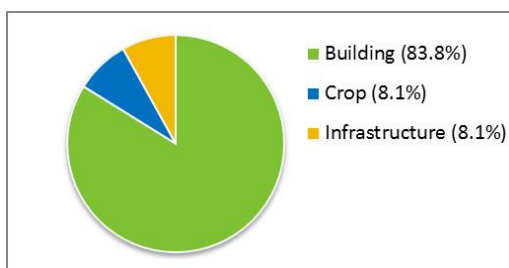


Figure 1: Contribution to total Average Annual Loss (AAL) from the three types of assets considered

The model also estimates losses from more infrequent tropical cyclones that are stronger and more damaging such as 50, 100, and 250 year return period (RP) events (see Appendix). The current losses from such events are: 32.8 million USD (50 year RP), 66.2 million USD (100 year RP) and 123.5 million USD (250 year RP), respectively.

FUTURE CLIMATE

As part of the project, Geoscience Australia (GA) analysed general circulation model outputs from a total of 11 different Global Climate Models (GCMs), from two successive generations of GCM experiments referred to as CMIP3 and CMIP5. The models in the two frameworks are forced by different emission scenarios: the A2 scenario¹ for CMIP3 models and the RCP 8.5 scenario² for CMIP5 models. Both A2 and RCP 8.5 represent high emission scenarios.

Results from the latest generation CMIP5 models, for which no dynamical downscaling was required, indicate that these models tend to perform better at replicating the behaviour of tropical cyclones in the current climate, especially for the Southern Hemisphere. Thus, more confidence should be placed in the results from the CMIP5 framework. The below results are based on the CMIP5 models.

The Mean Estimate reflects results obtained after averaging output over all five models under the same climate framework. Figure 2 displays the relative frequencies for different storm categories, for both current and Mean Estimate future climates.

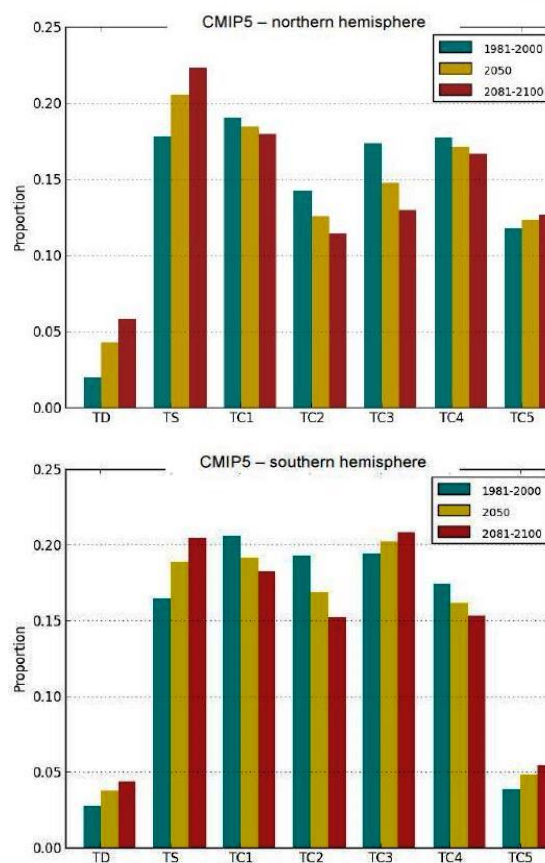


Figure 2: Mean Estimate relative proportion of TC intensity – multi model ensemble for CMIP5 models in the Northern and Southern Hemispheres. Classification is based on central pressure using a Cp-based Saffir-Simpson Hurricane Intensity Scale

For both hemispheres, there is an expected future increase in the relative frequency of tropical depressions, tropical storms, and category 5 storms, and a general decrease in the number of storms in the other categories. Most notable is the increase in category 5 storms (and category 3 storms in the southern hemisphere) which may have a measurable impact on observed losses in the region. There is also a slight equatorward movement of tropical cyclone tracks in the northern hemisphere and poleward movement of tropical cyclone tracks in the southern hemisphere.

Future loss projections

Of the five individual models analysed, generally two models suggest large increases in losses, two models

¹<http://www.ipcc.ch/ipccreports/sres/emission/index.php?idp=98>

²<http://link.springer.com/content/pdf/10.1007%2Fs10584-011-0148-z.pdf>

suggest decreases in losses and one model shows relatively small changes when compared to the current climate. The significant divergence in the individual model results indicates a large range of model estimates. Figure 3 shows end-of-century individual model projections for Exceedance Probability (EP – see Appendix) (blue) along with the current climate EP (green).

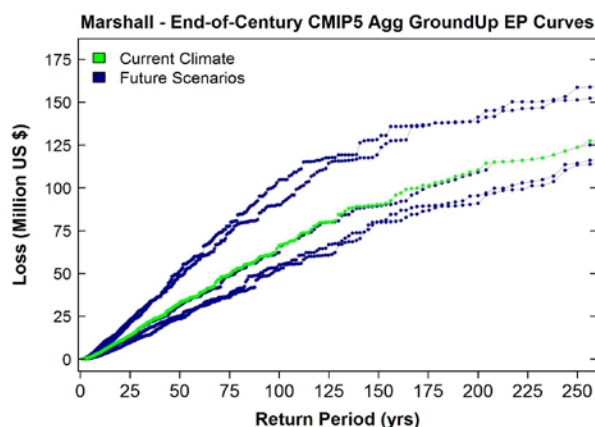


Figure 3: End-of-century EP-curves for individual CMIP5 models compared to the current climate EP-curve (green curve)

Any analysis of future model projections should consider estimates of the ensemble mean (the 'Mean Estimate' of all models), the full range of model results, and the worst case climate change scenario. The individual model that projects the greatest increase in losses as compared to the current climate defines the worst case scenario for the country.

In general, there is an increase in losses projected from tropical cyclones for the future climate for less extreme events (< 100-year return period) and a decrease in losses for more extreme events (higher return period). Figure 4 contrasts the end-of-century Mean Estimate projection with the current climate. The two EP-curves tend to keep in very close proximity, resulting in only small changes to projected annual average losses. Lower frequency events are projected to cause smaller losses in the future climate, while high to medium frequency events are projected to cause slightly increased losses.

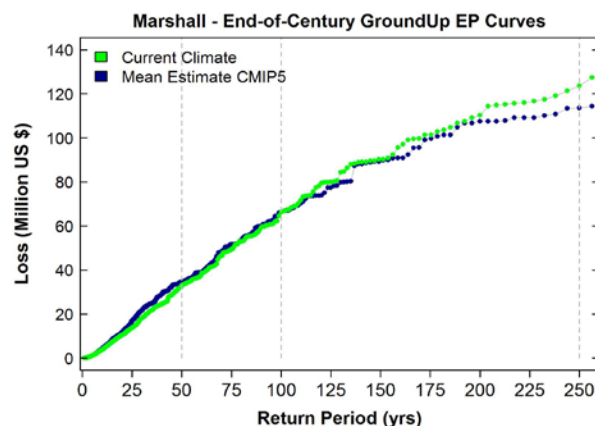


Figure 4: End-of-century EP-curve for the future Mean Estimate (blue curve) compared to the current climate EP-curve (green curve)

Mean Estimate projections indicate that, by end-of-century, losses from a 1-in-50 year tropical cyclone will increase by 5.3% compared to the current climate, while the worst case scenario (most upper curve in Figure 3) suggests a much more significant increase in loss of 47%. However, Mean Estimate projections of end-of-century losses from more extreme (1-in-250 year) events suggest a decrease of 8.1%.

Table 2: Loss estimates (USD) for current climate and future end-of-century Mean Estimate and worst case scenario

CMIP5 (Total Loss)	AAL	50yr RP	100yr RP	250yr RP
Current Climate	2,989,119	32,835,720	66,170,691	123,582,175
Future Mean Estimate	2,975,105	34,585,709	66,266,233	113,569,084
Future Worst Case	4,394,356	48,282,472	90,089,823	158,527,372

Table 2 contrasts current climate losses with the future Mean Estimate and worst case climate change scenario estimate across different return periods. The worst case scenario consistently projects significant loss increases when compared to the current climate across all return periods considered, as well as the AAL.

Mid-century v end-of-century future loss projections by different assets

The modelling of tropical cyclones under a future climate generally indicates both increases and decreases in Mean Estimate future losses compared to the current climate. The AAL increases from 2.99 million USD to 3.13 million USD by mid-century and

decreases to 2.98 million USD by end-of-century, an increase of 4.6% and a decrease of 0.5%, respectively.

Table 3 contrasts the AAL and the 50, 100, and 250 year RP losses from current and future climates, for both 2050 and 2100 time periods, across the different assets at risk. The total loss (AAL) represents the sum of the building, infrastructure, and crop AALs.

Projections indicate both increases and decreases in future losses to buildings and infrastructure. Crop changes are generally smaller compared to other assets and remain mostly positive. More people are generally affected (in terms of fatalities and casualties) by future tropical cyclone risk than under the current climate.

Note that no adjustment to account for future economic or population growth was considered for any of the assets.

It is uncertain why the tropical cyclone risk for the Marshall Islands is projected to increase by 2050 and decrease by 2100, for the AAL. A hypothetical explanation could be related to the different changes in latitude imposed under the two climate projections; this could result in a different number of storms of different intensities impacting the country at the two time periods. Further investigation will be necessary to fully understand this finding.

Table 3: Percent changes between future climate loss projections for mid-century and end-of-century, and the baseline, for different return periods, by different assets. Baseline loss numbers are expressed in USD

Mean Estimate		AAL	50yr RP	100yr RP	250yr RP
Total Loss	Current Climate	2,989,119	32,835,720	66,170,691	123,582,175
	Future 2050 (%)	+4.6	+1.8	+7.8	+3.3
	Future 2100 (%)	-0.5	+5.3	+0.1	-8.1
Building	Current Climate	2,504,911	28,541,735	59,241,400	111,889,047
	Future 2050 (%)	+5.3	+1.7	+6.0	+0.0
	Future 2100 (%)	-0.1	+8.6	-0.9	-7.9
Infrastructure	Current Climate	242,378	2,566,090	5,594,454	11,407,500
	Future 2050 (%)	+3.5	+6.8	+12.0	+5.5
	Future 2100 (%)	-5.0	+7.0	-0.1	-17.7
Crop	Current Climate	241,829	1,389,340	1,609,613	1,932,211
	Future 2050 (%)	-2.1	+2.0	+2.2	+3.4
	Future 2100 (%)	+0.4	+3.9	+4.3	+4.3
Population Affected	Current Climate	3	36	69	118
	Future 2050 (%)	+3.8	+2.8	+7.2	+5.1
	Future 2100 (%)	+2.3	+5.6	+0.0	-5.9

Wind, flood and surge contributions to total loss estimates

The analysis captures the effects of three hazards associated with tropical cyclones: strong winds,

precipitation-induced flooding, and coastal flooding due to storm surge. Tropical cyclone winds can be very destructive and in most cases they are the main cause of damage and subsequent losses.

Unlike the wind, which decreases in intensity as the storm moves inland, the intensity of storm-related precipitation and accumulated runoff can increase in inland regions and consequently also lead to significant damage to property.

The storm surge represents the sea water forced ashore due to the rise in sea level accompanying any approaching intense storm. A significant storm surge event can have devastating effects on-shore. Both sea level and precipitation changes under future climates are not considered in this study.

The main contributor to building and infrastructure total loss is wind, with only minor contributions from surge and flood. Figure 5 explores the *relative changes* in contributions to total loss split by hazard between the current and the Mean Estimate future climate.

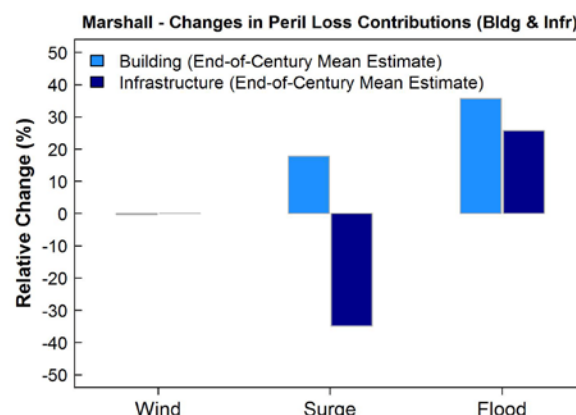


Figure 5: Percent changes between the CMIP5 future climate and the current climate for Wind, Surge and Flood loss contributions to total loss, for buildings (light blue) and infrastructure (dark blue)

There is an increase in the flood contributions to total loss for both buildings and infrastructure and a mixed change for storm surge in the future climate. However, it is important to note that the reported changes for storm surge and flood are calculated between very small initial numbers and ultimately, wind remains the main contributor to loss for both assets.

Wind hazard maps for end-of-century climate compared to current climate

The wind hazard does not show significant changes for the 100-year return period under future climate, as shown in Figure 6. The 100-year return period winds, which represent an event that has a 40% chance of being equalled or exceeded once in 50 years, are capable of generating severe damage to buildings, infrastructure, and crops with consequent large economic losses.

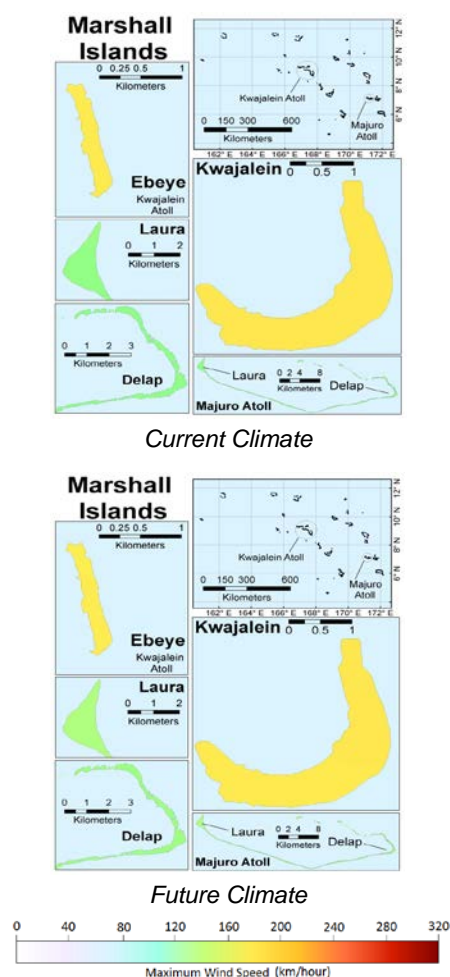


Figure 6: 100 year mean return period winds (maximum 1-minute sustained winds in km/h) for the current climate (top panel) and the future climate (bottom panel)

Figure 6 depicts the end-of-century 100 year mean RP wind speed, expressed as maximum 1-minute sustained winds in km/h, for the current climate (top)

and future projection (bottom). For example, for the east side of Kwajalein Atoll, the 100 year RP wind speed slightly increases from 176.9 km/hr to 177.4 km/hr by end of century. The current climate wind patterns in the Marshall Islands are generally maintained across the islands under future climate projections.

SUMMARY

The evaluation of the current and future climate tropical cyclone risk in the South Pacific region was carried out using Geoscience Australia's analysis of tropical cyclone activity along with AIR's catastrophe model developed specifically for the region. The risk model allows for the translation of the climate change induced effects observed in the frequency, intensity, and path of tropical cyclones into direct loss results for the region and the individual countries within.

For both hemispheres, numerical models predict a future increase in the relative frequency of tropical depressions, tropical storms, and category 5 storms and a general decrease in the number of storms in the other categories (Figure 2). Most notable is the regional increase in category 5 storms.

The financial impacts are measured using metrics such as the Average Annual Loss (AAL) or the 100 year return period loss. For planning purposes, it is useful to understand both average annual losses as well as possible losses from extreme events.

The end-of-century Mean Estimate (Table 3) suggests both increases and decreases in future losses compared to the current climate, across different return periods. Increases in losses are projected for higher frequency events (< 100 year RPs - Figure 4).

Mean Estimate projections indicate that, by end-of-century, losses from 1-in-50 year tropical cyclones will increase by 5.3% compared to the current climate, while the worst case scenario suggests an increase in loss of 47% (Table 2).

The main contributor to total losses to buildings and infrastructure is wind, with only minor contributions from storm surge and flood. There is a slight increase in the flood contributions to total loss (Figure 5) for future climate. Similar to the current climate, the wind hazard remains the main contributor to the future loss for both assets.

The end-of-century Mean Estimate projections result in minimal 100 year RP wind changes (Figure 6). The current climate general wind hazard patterns are maintained across the country.

Models from both the CMIP3 and CMIP5 global climate model runs were analysed in this project. The CMIP5 models demonstrated greater skill and performance in replicating current climate conditions, and reporting of damage and loss has therefore focused on results from the CMIP5 framework.

There is consistent divergence, in the resulting EP-curves for individual models under the same framework (Figure 3) indicative of significant model uncertainty. The mean changes in future losses compared to the baseline are too small to be considered statistically significant when measured against the range of model estimates.

There is also the uncertainty associated with the risk model itself that needs to be accounted for. A statistical quantification of the uncertainty around each estimated EP-curve reveals that the separation between the baseline and the future projection is not large enough to be considered statistically significant.

APPENDIX

Classification of tropical cyclones

A tropical cyclone represents an atmospheric low-pressure system with a spiral arrangement of thunderstorms that produce strong winds and heavy rain. The table below describes the categorisation of storms based on maximum sustained winds and minimum central pressure as used in this study.

Classification	1-minute sustained wind speed (km/h)	Minimum central pressure (hPa)
Tropical Depression (TD)	<= 62	>= 1005
Tropical storm (TS)	63-118	1005-995
Category 1 (TC1)	119-153	995-980
Category 2 (TC2)	154-177	980-965
Category 3 (TC3)	178-208	965-945
Category 4 (TC4)	209-251	945-920
Category 5 (TC5)	>= 252	< 920

Definition of key metrics used to describe future risk changes

Several key metrics are utilised in order to evaluate the change in losses/risk between the current climate and the future climate: Average Annual Loss (AAL), Return Period (RP) Loss, Exceedance Probability (EP) curve.

- Average Annual Loss (AAL). AAL represents the sum of all losses observed in the domain divided by all realisations of next-year activity (10,000 years); AAL thus refers to the average loss that can be expected to occur per year.
- Return period (RP) loss. The X-year return period loss is the loss that can be expected to occur or be exceeded on average once every X years. Highlighted for this analysis are the 50 year (2.0% exceedance probability), 100 year (1.0% exceedance probability) and 250 year (0.4% exceedance probability).
- Exceedance Probability curve (EP-curve). An EP-curve represents the probability curve that various levels of loss will be exceeded. By inverting the exceedance probability to obtain corresponding return periods, the EP-curve then represents the various levels of loss associated with different return period events. An EP-curve is obtained by sorting all losses largest to smallest observed over a domain, assigning a rank to all entries (1 being the largest loss, 2 being the second largest loss etc.), and then dividing the ranking by the total number of years (10,000).

Loss and damage

The 'losses' referred to in this report represent the 'damages'; (i.e., the direct ground up-losses before the application of insurance (zero deductible)), plus an estimation of the emergency losses (i.e., debris removal, setting up shelters for those made homeless, or supplying medicine and food). All estimates of current and future losses in this report are in 2010 dollars.

COUNTRY RISK PROFILE: MARSHALL ISLANDS



Australian Government



GFDRR
Global Facility for Disaster Reduction and Recovery

With financial support from the European Union
In the framework of the ACP-EU Natural Disaster Risk Reduction Program
managed by the GFDRR



AIR WORLDWIDE®



For more information visit www.climatechange.gov.au/climate-change/adapting-climate-change
or contact international.adaptation@climatechange.gov.au