

U.S. Inaugurates Climate Change Project to Protect Tanu Beach Shoreline



Manase village Mayor and Owner of Tanu Beach Fales, Taito Muese speaking before jointly cutting the ribbon with US Chargé d'Affaires Peter Ganser.



Disaster Management Office Head, Muliagatele Filomena Nelson, US Chargé d'Affaires Peter Ganser and Samoa Tourism Authority's Acting CEO, Faamatuainu Lenata'i Suifua.

The U.S. Chargé d'Affaires Peter Ganser visited the village of Manase, Savaii this week, to handover an innovative U.S. sponsored coastal protection project installed at the Tanu Beach Fales shoreline.

The project is funded by a SAT\$312,000 grant from the United States Agency for International Development (USAID) through its Coastal Community Adaptation Project (C-CAP), which builds the resilience of vulnerable coastal communities in the Pacific Islands region to the impacts of climate change and natural disasters. The project engages with local communities to rehabilitate and construct small-scale community infrastructure, and improve disaster preparedness.

Manase is famous for its white sandy beach, attracting tourists to the area and providing livelihood for the community; however, sea level rise due to climate change has accelerated coastal erosion, damaging the beachfront and threatening the community's stability. To prevent further degradation, C-CAP worked with the community to install a geotextile sand container revetment and protect 165 meters of the Tanu Beach Fales coastline. The revetment will be more durable than traditional sandbags, resistant to UV damage, and is self-healing if punctured.

At the inauguration, Chargé d'Affaires Ganser applauded the community for helping to develop the coastal protection

project, noting the importance of the cooperation between the governments of the United States and Samoa in addressing climate change adaptation. "I understand that in the process of working with the C-CAP team, as a community you identified that stabilizing the beachfront would best help you build climate change resilience. An integral part of USAID projects is the involvement and input by all members of the community—men, women, youth groups, the elderly and disabled, in understanding how climate change affects your lives and to identify your most pressing adaptation needs."

Following the remarks, Chargé d'Affaires Ganser and Taito Muese, mayor of Manase and owner of Tanu Beach Fales, cut the ribbon to inaugurate the project and planted the first tree on the site which will provide further stability and increase protection to the fragile coastline.

The project was developed in conjunction with the Samoa Tourism Authority, Ministry of Natural Resources and Environment, Ministry of Women, Community and Social Development, and members of the Manase village.

This project is part of the USAID Coastal Community Adaptation Project (C-CAP), which is assisting vulnerable communities throughout the Pacific. Over \$1.5 million tala is assisting 10 villages in Samoa on both Upolu and Savaii.

- Samoa Tourism Authority



STA receives equipment to better protect Samoa's shorelines



US Chargé d'Affaires Peter Ganser handing over Elcorock equipments to STA Acting CEO, Faamatuainu Lenata'i Suifua.



Elcorock sewing machine.



Elcorock filling frame.

Climate change affected tourism sites could benefit from equipments received by the Samoa Tourism Authority (STA) to support and install geotextile coastal protection systems. STA Acting CEO, Faamatuainu Lenata'i Suifua received equipments from the U.S. Chargé d'Affaires Peter Ganser, during the handing over ceremony of the coastal protection project to protect the shoreline of Tanu Beach Fales in Manase this week.

Tanu Beach Fales is the first in Samoa and the Pacific Region to have the Elcorock method in place, in which these equipments were used. The Elcorock is a geotextile sand bag used as shoreline protection systems.

The equipments include an Elcorock filing frame and two sewing machines.

STA Acting CEO, Faamatuainu Lenata'i Suifua acknowledged the support of the government and people of the United States of America through the U.S. Chargé d'Affaires Peter Ganser, and said that the equipments will still be available to the community of Manase should there be a need to repair the installed system, and also for other affected communities in Samoa.

- Samoa Tourism Authority



Tourism Management Plans completed for Savaii communities



Community participants and Project Coordination Team with the completed 3D Models of Savaii selected villages at Apita o Pisaga Hall in Salelologa.



Close up of Palauli's 3D Model during the workshop at Apita o Pisaga Hall in Salelologa.

The Tourism Development Area (TDA) Management Plans and Participatory Three Dimensional Models for selected communities in Samoa have now been completed. The Samoa Tourism Authority and other Government Ministries in working together with the communities to enhance local resilience to climate change completed the final phase of workshops in Savaii this week.

Following the Islands of Manono-tai two weeks ago and Upolu last week, the workshops have drawn out the communities and tourism operators' vision for developing the TDAs. Considerable consultation and research has been undertaken across the Tourism Development Areas within Samoa. The current activity seeks to develop TDA management plans that draw together this extensive information and supplement it where necessary in order to develop a comprehensive road map for action.

Five 3D Models have now been completed for Savaii, from villages namely Lano; Manase; Falealupo and Tufutafoe, Satuiatua; Fa'ala and Vailoa, Palauli turned. These communities turned out in numbers this week at the Apita

o Pisaga Hall in Salelologa, Savaii to participate in a four-day activity, which was officially opened in the beginning of the week by Tourism Climate Change Project Manager, Amiaifolau Afamasaga, who stressed the importance of pushing tourism developments and thanked the related government ministries involved in the process, such as the Ministry of Natural Resources and Environment; Ministry of Agriculture and all communities involved.

The Australian based 'Water Technology' consultancy firm is leading the formulation of the TDA Management Plans.

The other villages who have completed their Tourism Management Plans include Manono-tai, Lalomanu, Saleapaga, Saanapu and Sataoa.

A total of eight 3D Models have now been completed.

This project is funded by the Global Environment Facility (GEF) through the United Nations Development Programme (UNDP).

- Samoa Tourism Authority



3D Model: Lano & Manase



Falealupo & Tufutafoe



Satuiatua



Vailoa & Faala, Palauli

Miss Samoa & Miss Pacific Islands shares views on women in parliament



Miss Latafale Auva'a with Samoa Ala Mai group, women community leaders and participants of the youth consultation on women in parliament.

Miss Samoa and Miss Pacific Islands, Latafale Auva'a spoke about the empowering of women, during the 'Samoa Ala Mai' group's youth consultation on women in parliament. Samoa Ala Mai is a non partisan group advocating for women's participation in Parliament and to increase women's political participation.

Miss Auva'a was invited by Samoa Ala Mai as a panellist to speak about her views of women in parliament - why encouraging women to be involved in parliament is important and what are the preventions of women taking up positions. Miss Auva'a said it was a fun interactive discussion and many opinions were voiced about women's involvement.

"I chose to focus my discussion on empowering women to have self-worth and discussing inherent biased perceptions based on systemic

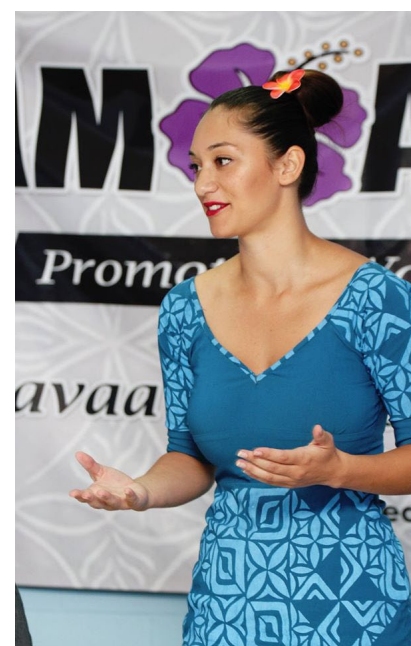
inequalities within our political system deterring women to become in politics." Said Miss Auva'a.

She added that she "also suggested that civics or political education should be introduced as a topic for High School students to study in order to influence the younger generation of women into becoming aware, involved and opinionated in the political situation of our time."

Miss Auva'a was able to share and listen to various perspectives on how Samoa can encourage and educate Samoan ladies into running for parliament.

Young vibrant leaders from different constituencies in the country attended the workshop, which was held at the Samoa Chamber of Commerce's conference room.

- Samoa Tourism Authority



Miss Samoa & Miss Pacific Islands, Latafale Auva'a speaking at the Samoa Ala Mai youth consultation - promoting women in parliament.

COUNTDOWN to Samoa Commonwealth Youth Games 2015

161 DAYS September 5, 2015



Extreme Tides in Samoa 2015

10 lowest tides for 2015



Date	Time	Height
20 Feb	20 Feb	0.11m
21 Mar	21 Mar	0.13m
19 Mar	19 Mar	0.13m
20 Mar	20 Mar	0.13m
19 Feb	19 Feb	0.13m
22 Jan	22 Jan	0.14m
29 Sep	29 Sep	0.14m
28 Oct	28 Oct	0.14m
28 Sep	28 Sep	0.14m
21 Feb	21 Feb	0.14m



10 highest tides for 2015

Date	Time	Height
19 Feb	18:37	1.53m
20 Mar	18:18	1.51m
30 Aug	06:10	1.51m
27 Oct	17:57	1.51m
28 Sep	05:49	1.51m
18 Feb	17:46	1.51m
20 Feb	19:28	1.51m
21 Jan	18:55	1.50m
19 Mar	17:28	1.50m
31 Aug	07:00	1.50m

Tide predictions are based on the effects of the gravitational forces exerted by the moon, the sun, the rotation of the earth and averaged seasonal changes

The actual tide height will be a combination of these effects and the weather conditions at the time. The effects of the weather are not included in these tide predictions

What are tides?

Tides are the daily rise and fall of sea levels, caused mainly by the gravitational pull of the moon as it revolves around the earth.

Tides are also affected by the earth's rotational and the gravitational pull of the sun.

What are spring and neap tides?

Spring and neap tides are part of the normal tidal cycle and occur regularly, usually twice per month.

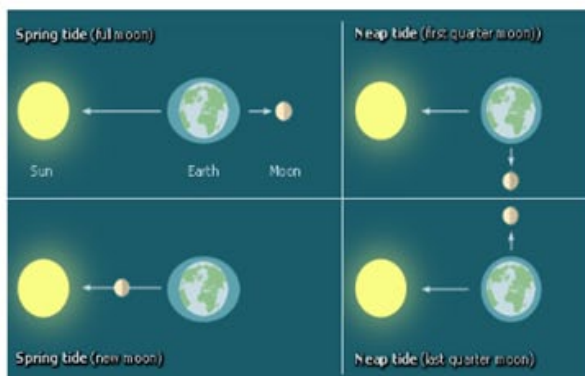
Spring tides are very high tides and very low tides that occur during full and new moon phases, when the gravitational forces of the sun and moon combine to exert a stronger pull on the oceans.

What are king tides?

The term king tide is commonly used to describe an especially high spring tide. King tides occur a few times every year, when the gravitational pull of the sun and moon upon earth is strongest.

This happens when the moon is closest to the earth in its monthly orbit. When this coincides with a spring tide, it will produce an especially high tide, or king tide.

In the Pacific, the highest king tides are likely to occur during the months from November to March, when the earth is also closest to the sun in its annual orbit.



During the moon's quarter phases each month, the sun and moon are at right angles, and the gravitational forces cancel each other out, resulting in lower high tides and higher low tides called neap tides.

CONTACT US

Meteorology Division
Mulino
Apia, Samoa

T: 20855 F: 23176

Web: www.samet.gov.ws
Facebook

<https://www.facebook.com/Samoa Meteorological Services>

A product of the Samoa's Climate Early Warning System

Quote of the week

"Success is walking from failure to failure with no loss of enthusiasm."

- Winston Churchill



TOURISM CYCLONE RECOVERY PROGRAMME



Samoa Tourism Authority
FMFM II Building, Ground Floor
P.O Box 2272, Apia Samoa
P: +685 63500 F: +685 20886
W: www.samoa.travel

SPECIAL ANNOUNCEMENT

The Samoa Tourism Authority wishes to remind all tourism businesses and operators that the 3 year TCRP funding scheme closes 30th JUNE 2015. Cyclone Evan affected businesses are advised to submit applications for recovery assistance at their earliest convenience.

The Authority on behalf of the TCRP Facilitating Group remind all tourism businesses and operators that funding under the TCRP is still available and is set under the following conditions;

- Tourism Businesses directly affected by tropical cyclone Evan are entitled to a Reconstruction Grant of up to SAT \$100,000. (Conditions Apply)
- Registered Tourism Businesses (including those eligible to the above mentioned grant) are entitled to a Marketing Grant of up to SAT \$20,000. (Conditions Apply)

Interested business proprietors are required to contact Marita Ah Sam on marita@samoa.travel / Tel 63507, Tupai Robert on robert@samoa.travel / Tel 63508 or Alexandra Rankin on alexandra@samoa-hotels.ws / Tel 30160 for further enquiries or assistance with application forms.

Ma le faaaloalo lava,

The Secretariat

Tourism Cyclone Recovery Programme



Ultimate Rugby Celebration Event Schedule



Samoa Tourism Authority is currently in the process of putting together a schedule of events for the upcoming Manu Samoa and All Blacks game from the 6th – 10th July which has been named the '**Ultimate Rugby Celebration**'.

If your business is planning any special events during this time, we'd like to include you in our event schedule.

For further information, please contact STA Events Coordinator, Kristian Scanlan on email kristian@samoa.travel or ph 63509.



For more information or to share your story, please contact:

Su'a Hased Ileremia

STA Public Relations & Communications Officer

Ground Floor, FMFMII Government Building, Eleele Fou

Ph: +685 63 528 | M: +685 724 7865 | E: hased@samoa.travel