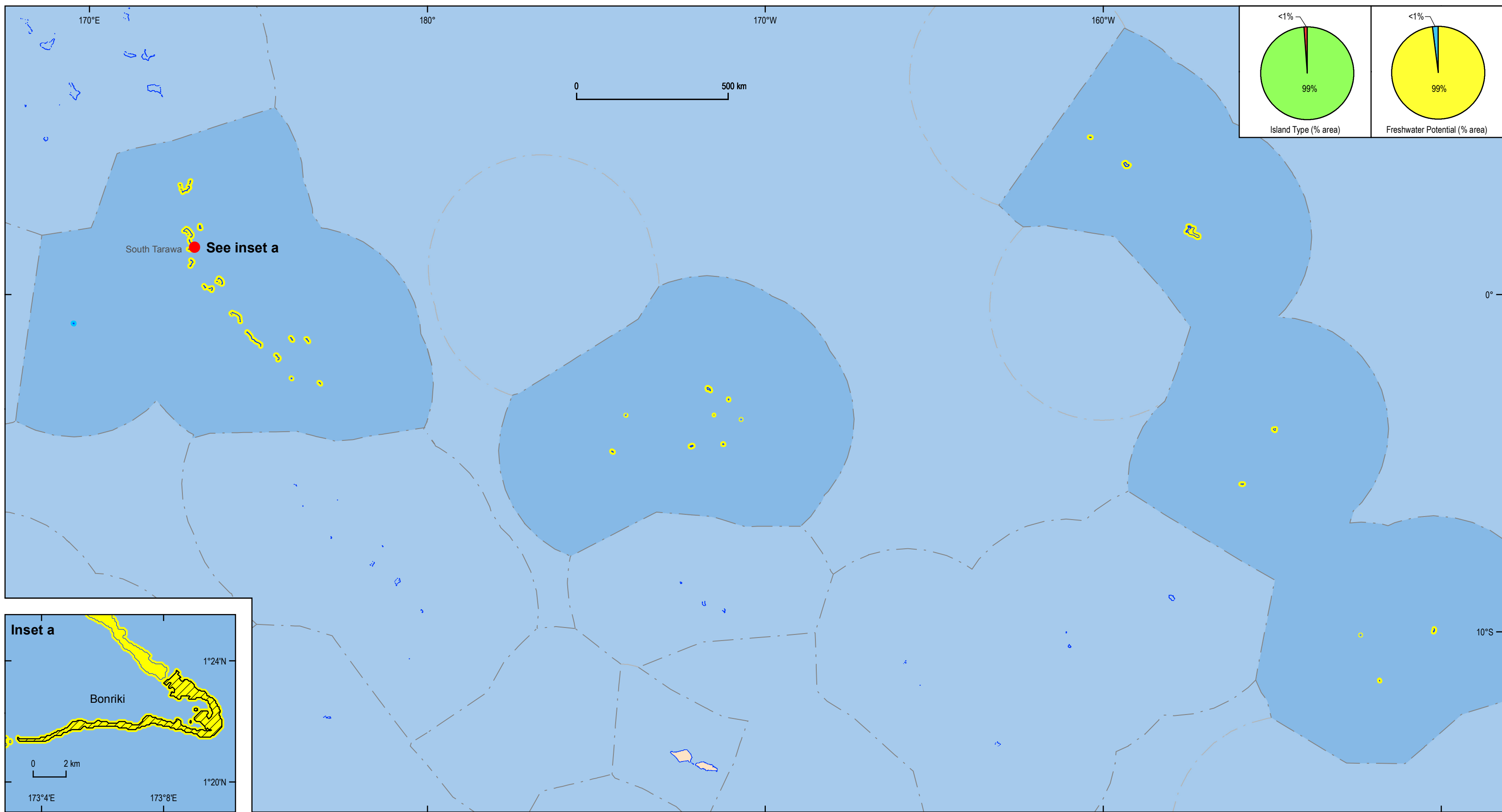
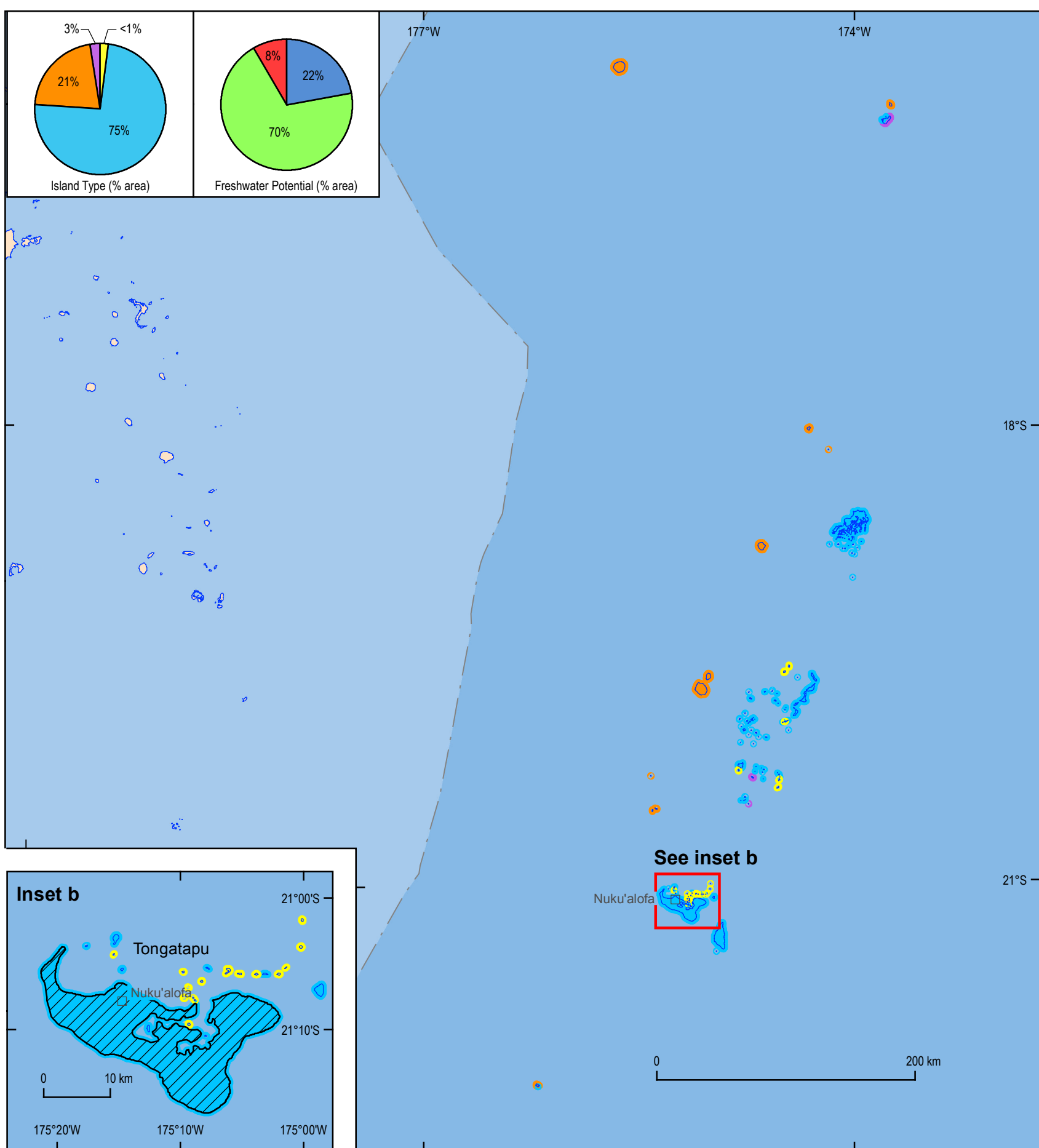


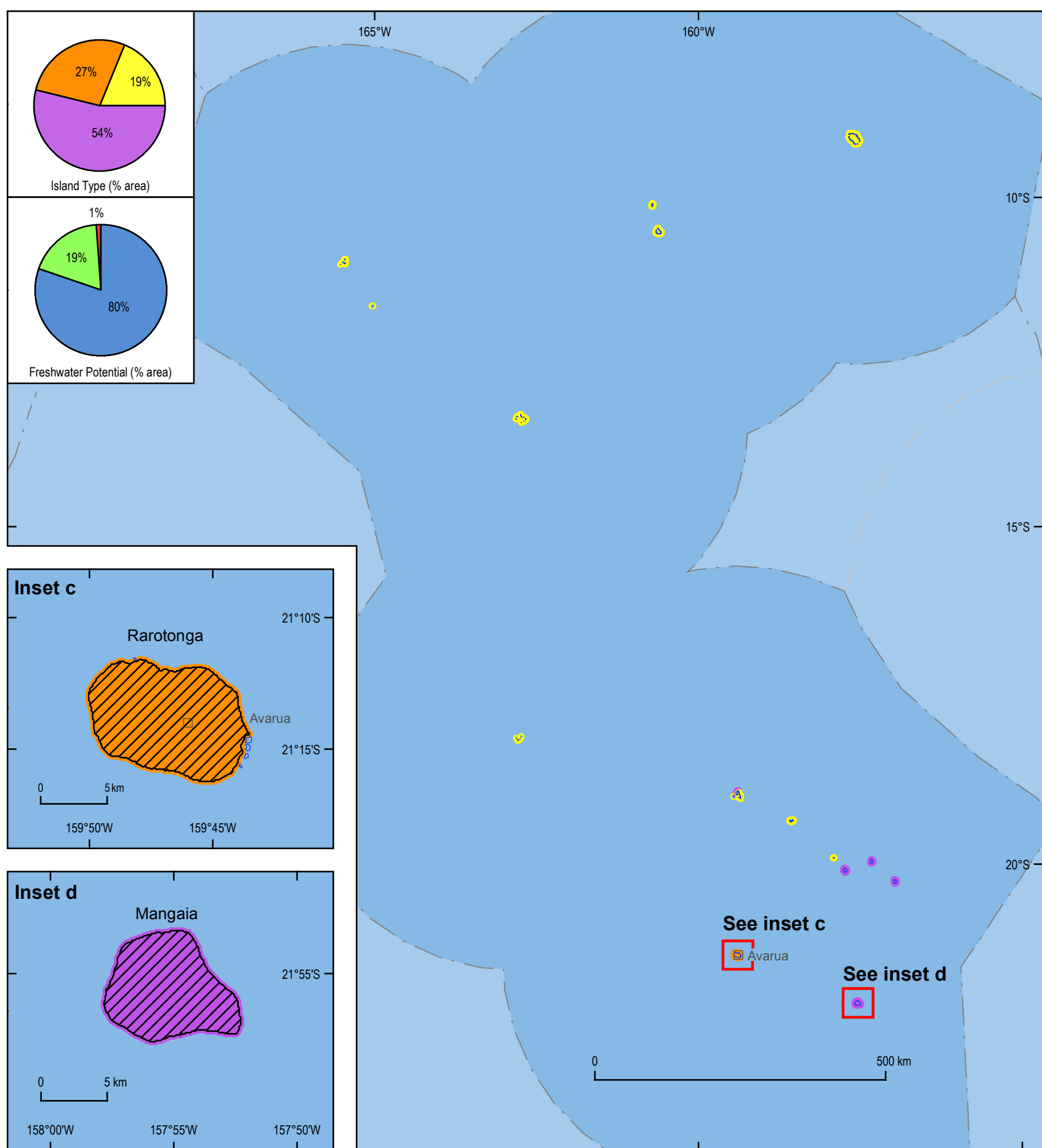
KIRIBATI



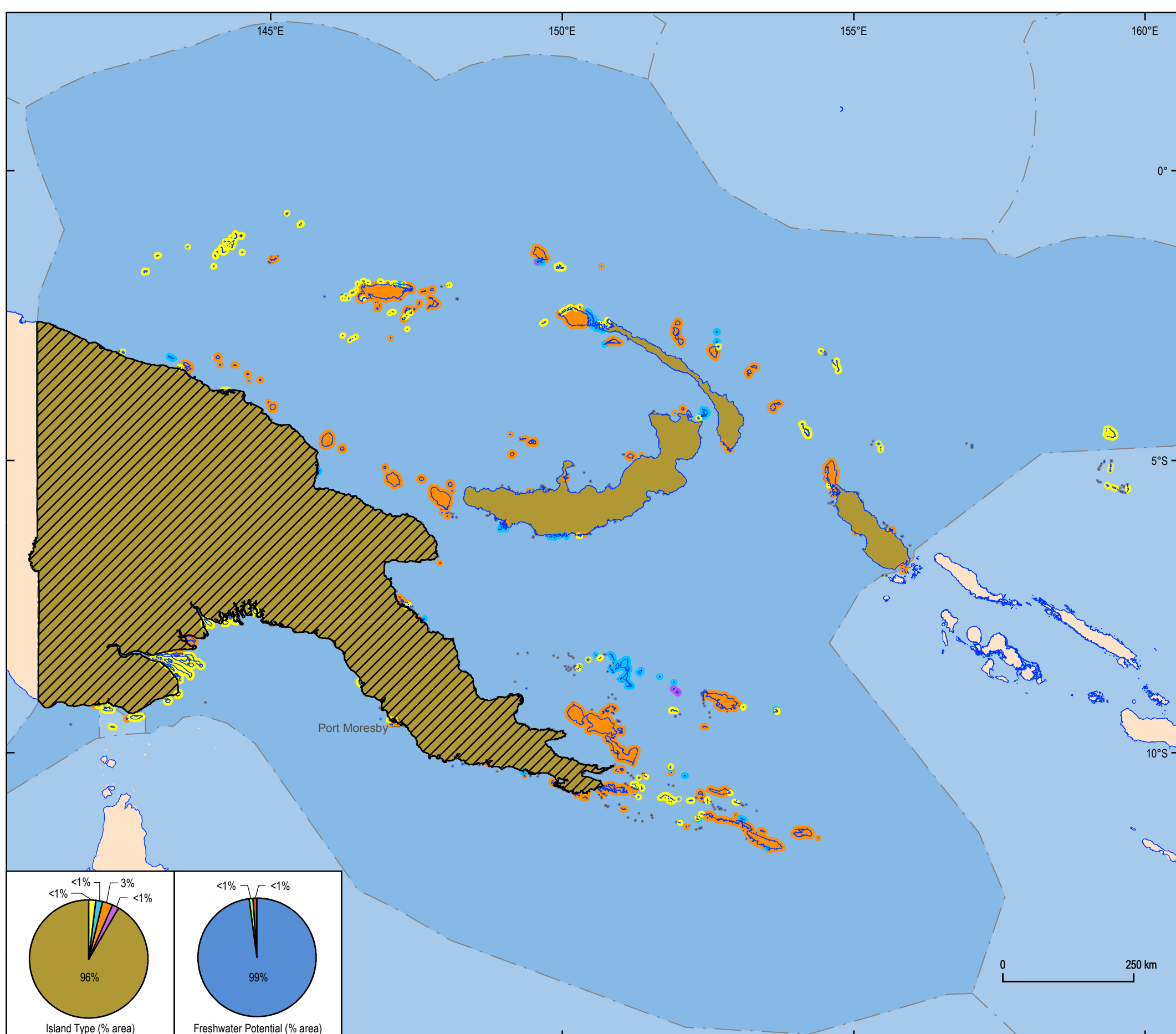
TONGA



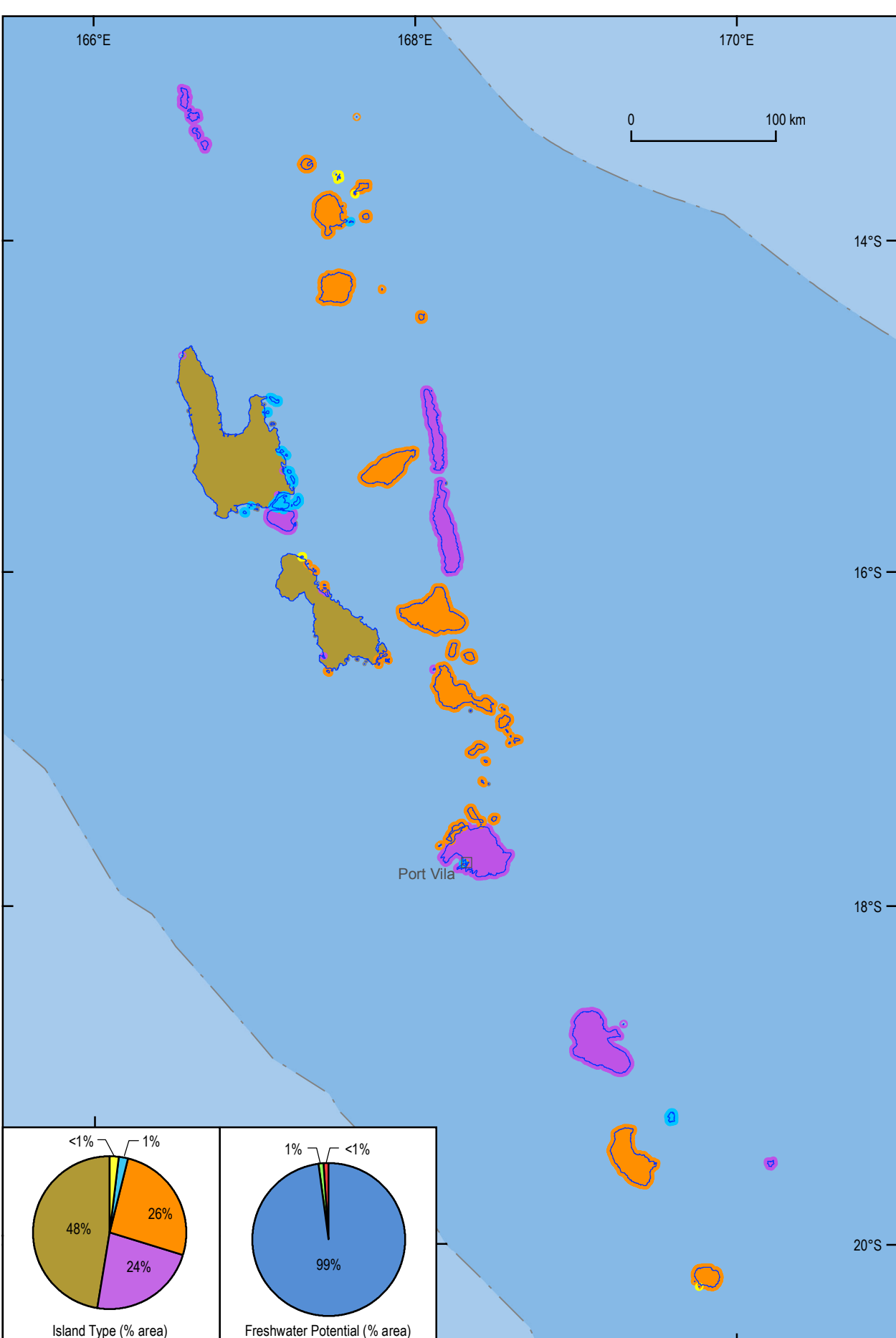
COOK ISLANDS



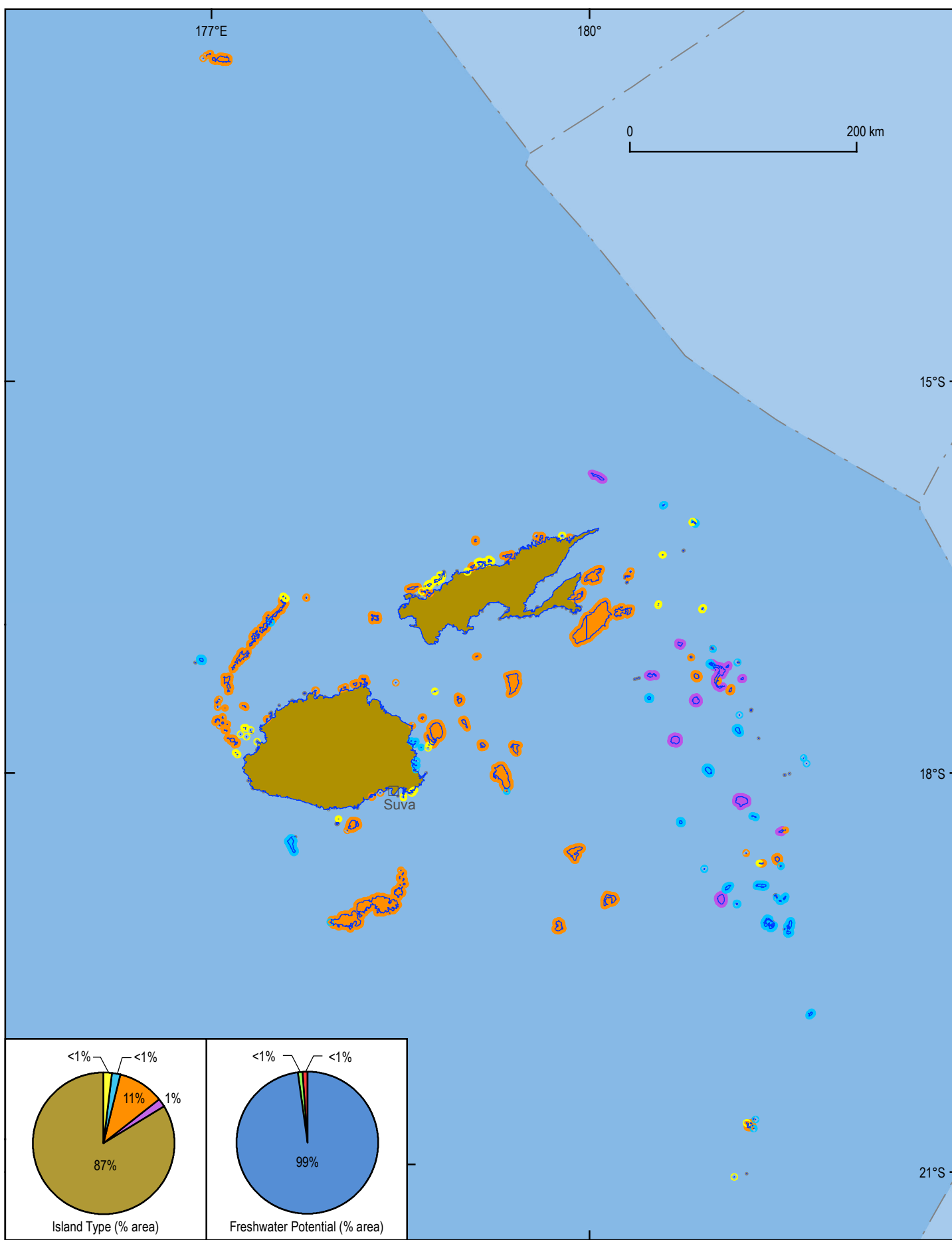
PAPUA NEW GUINEA



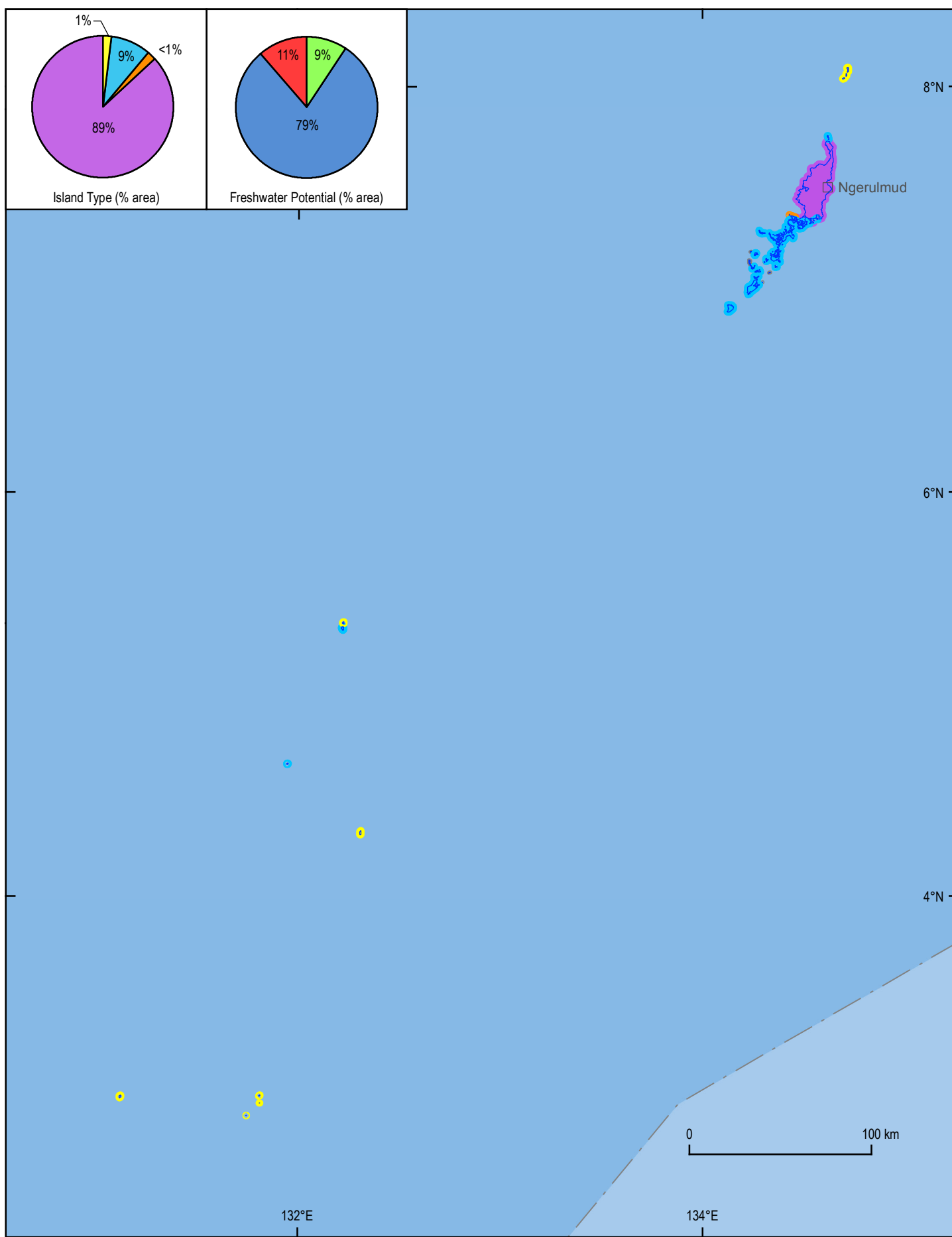
VANUATU



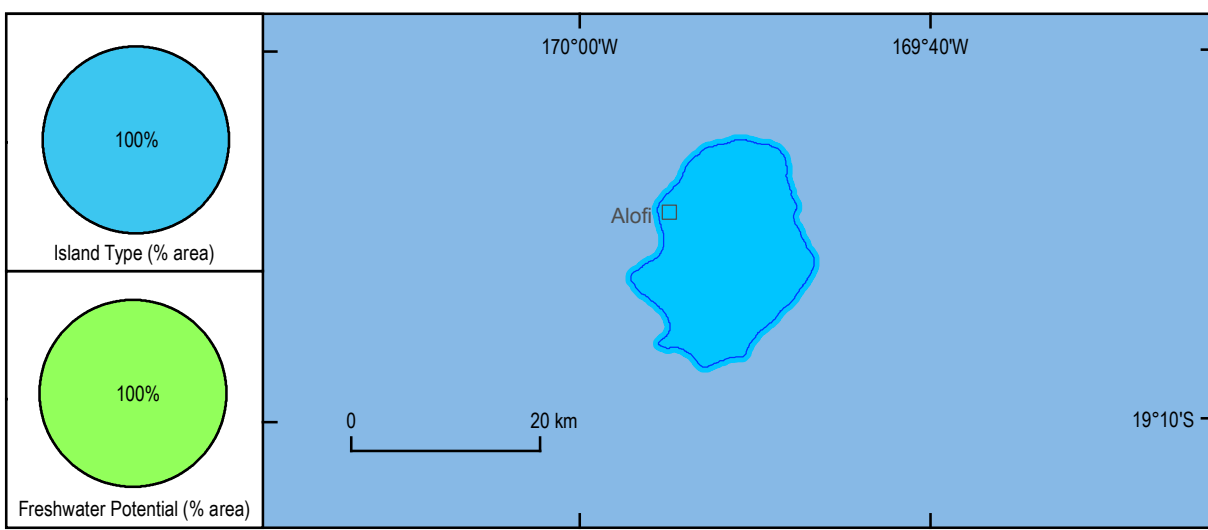
FIJI



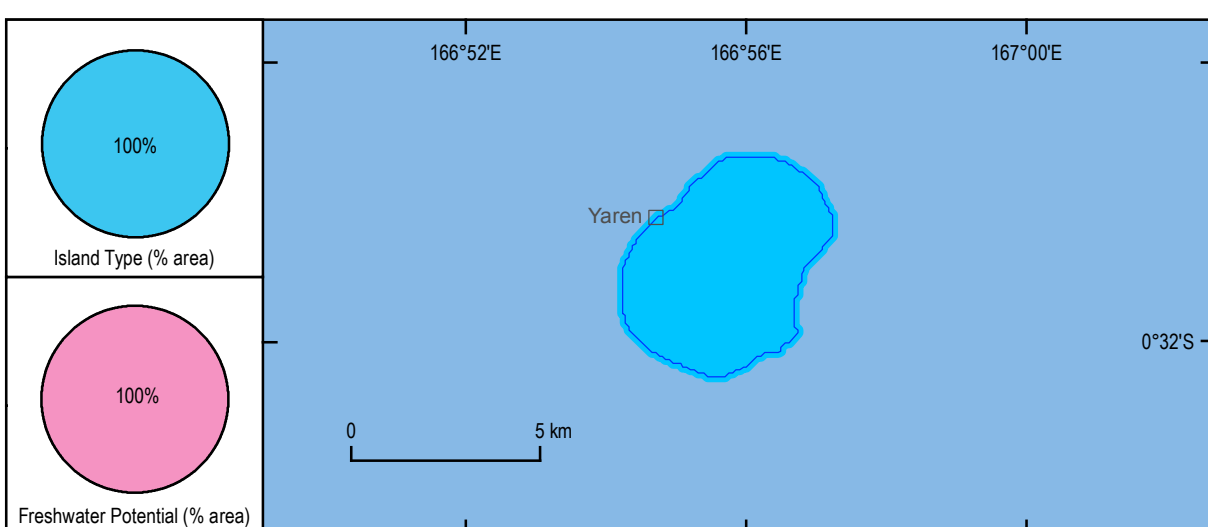
PALAU



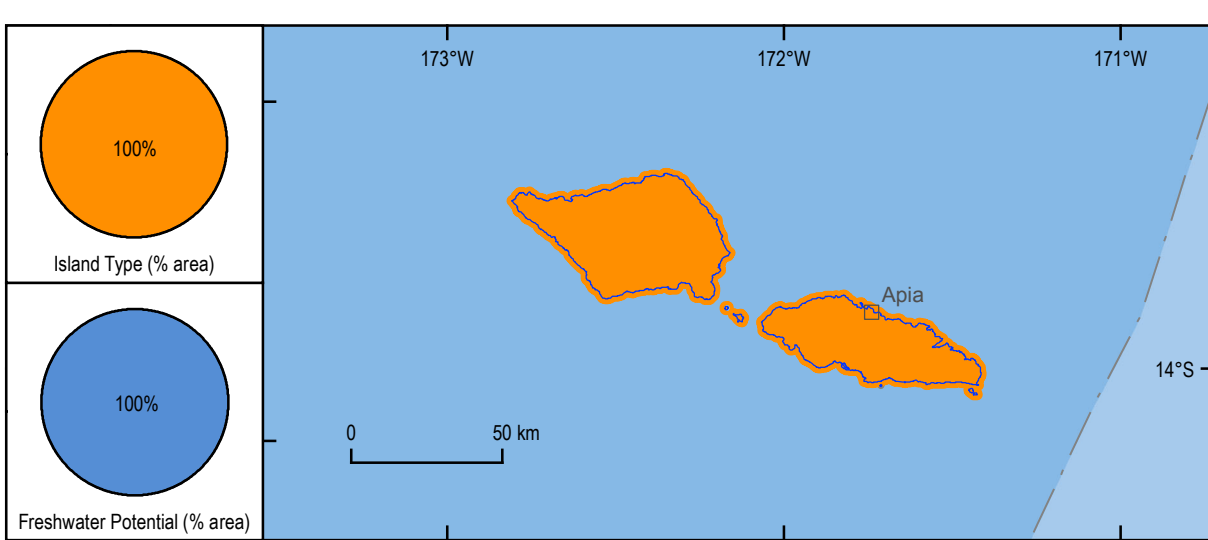
NIUE



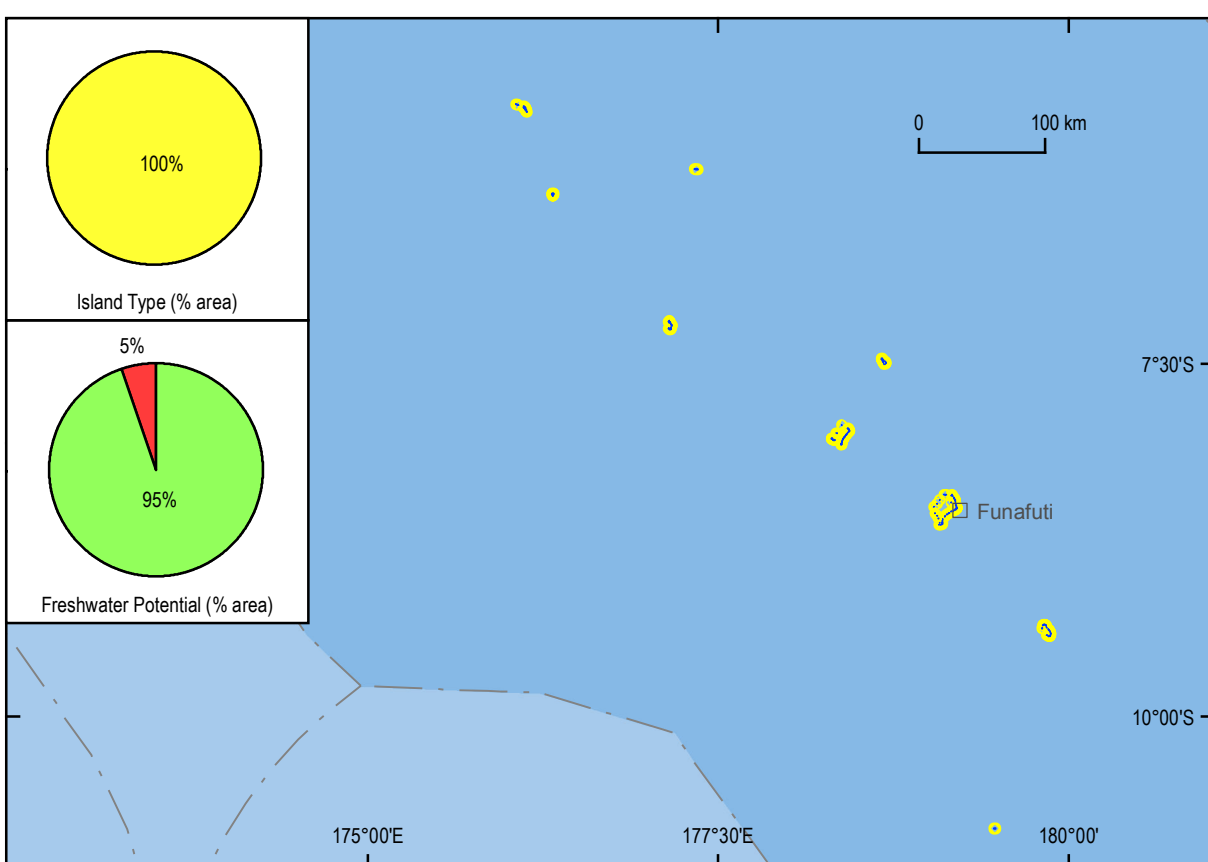
NAURU



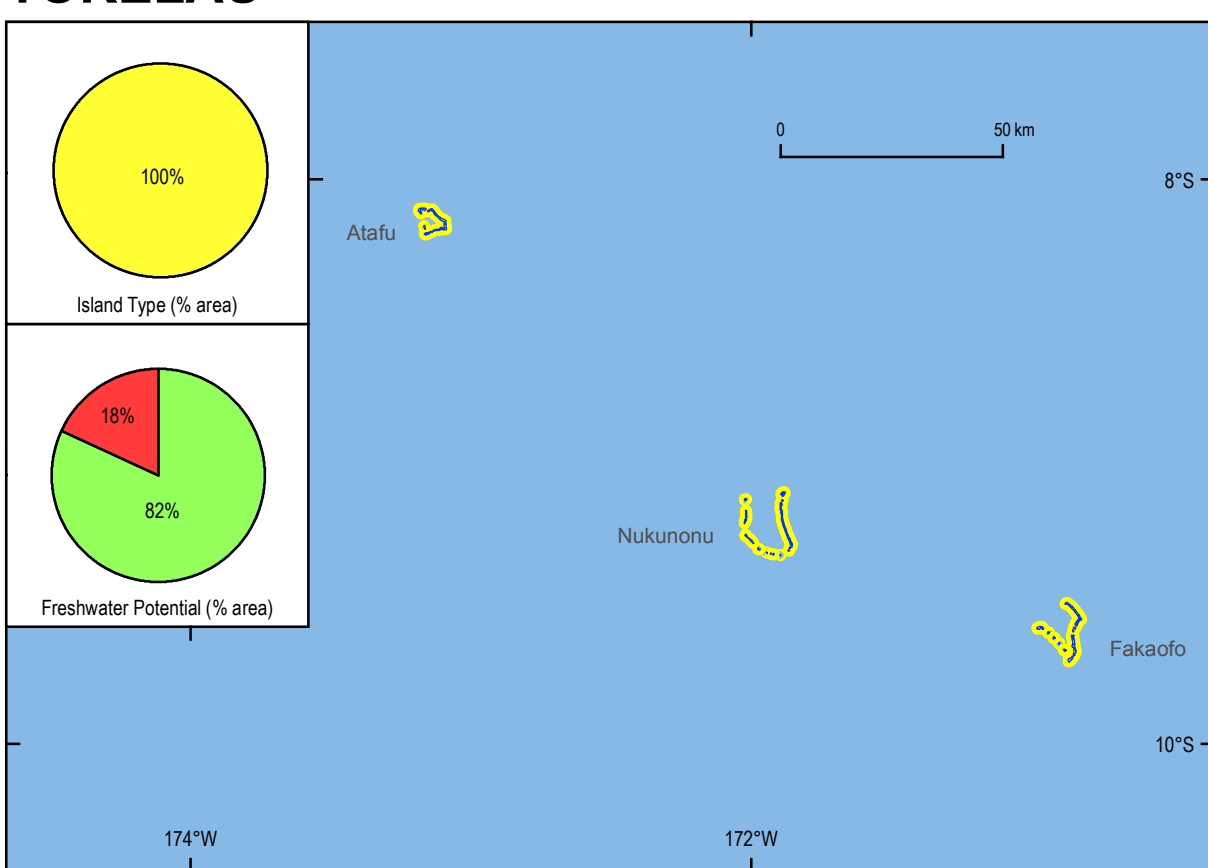
SAMOA



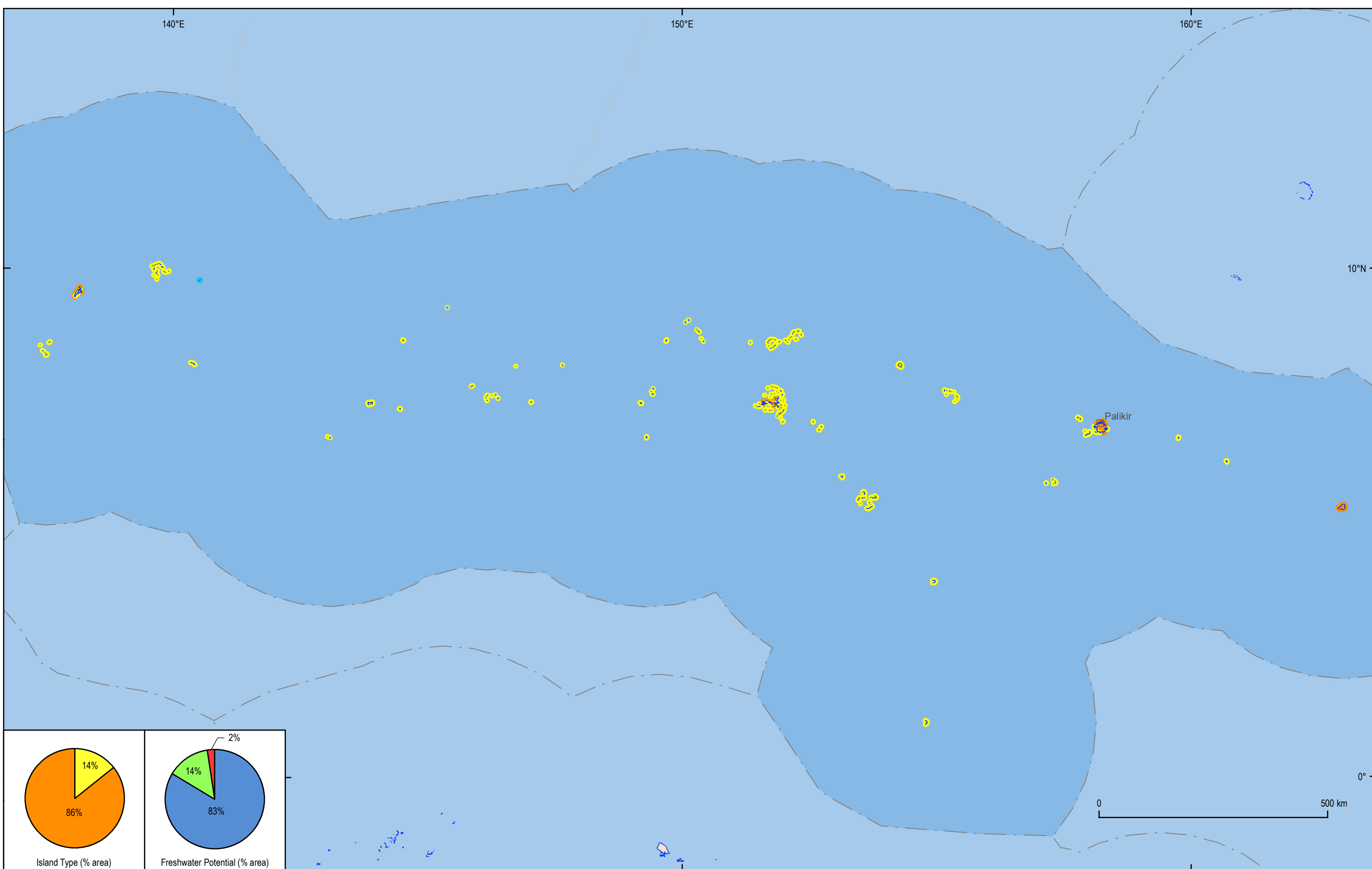
TUVALU



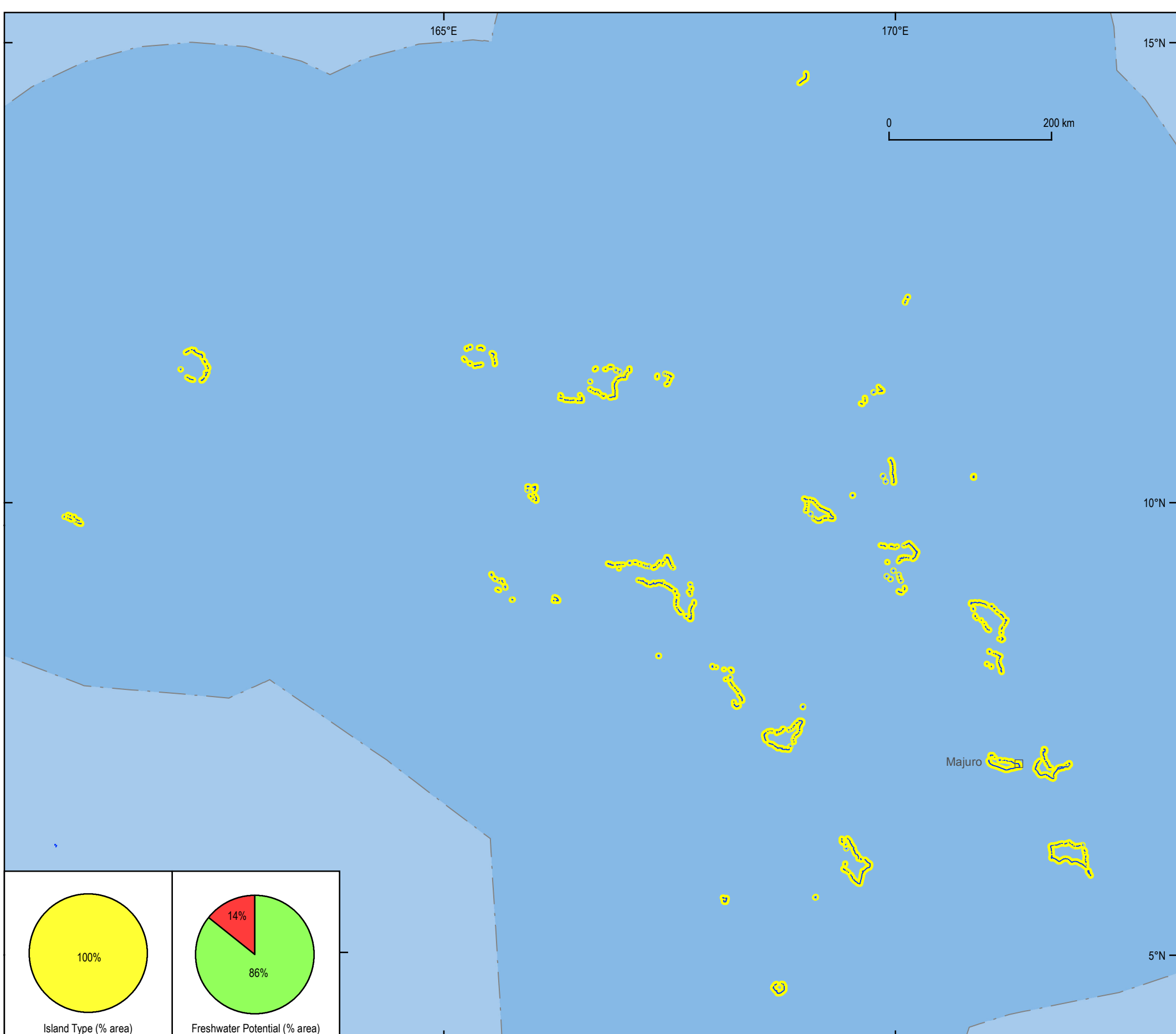
TOKELAU



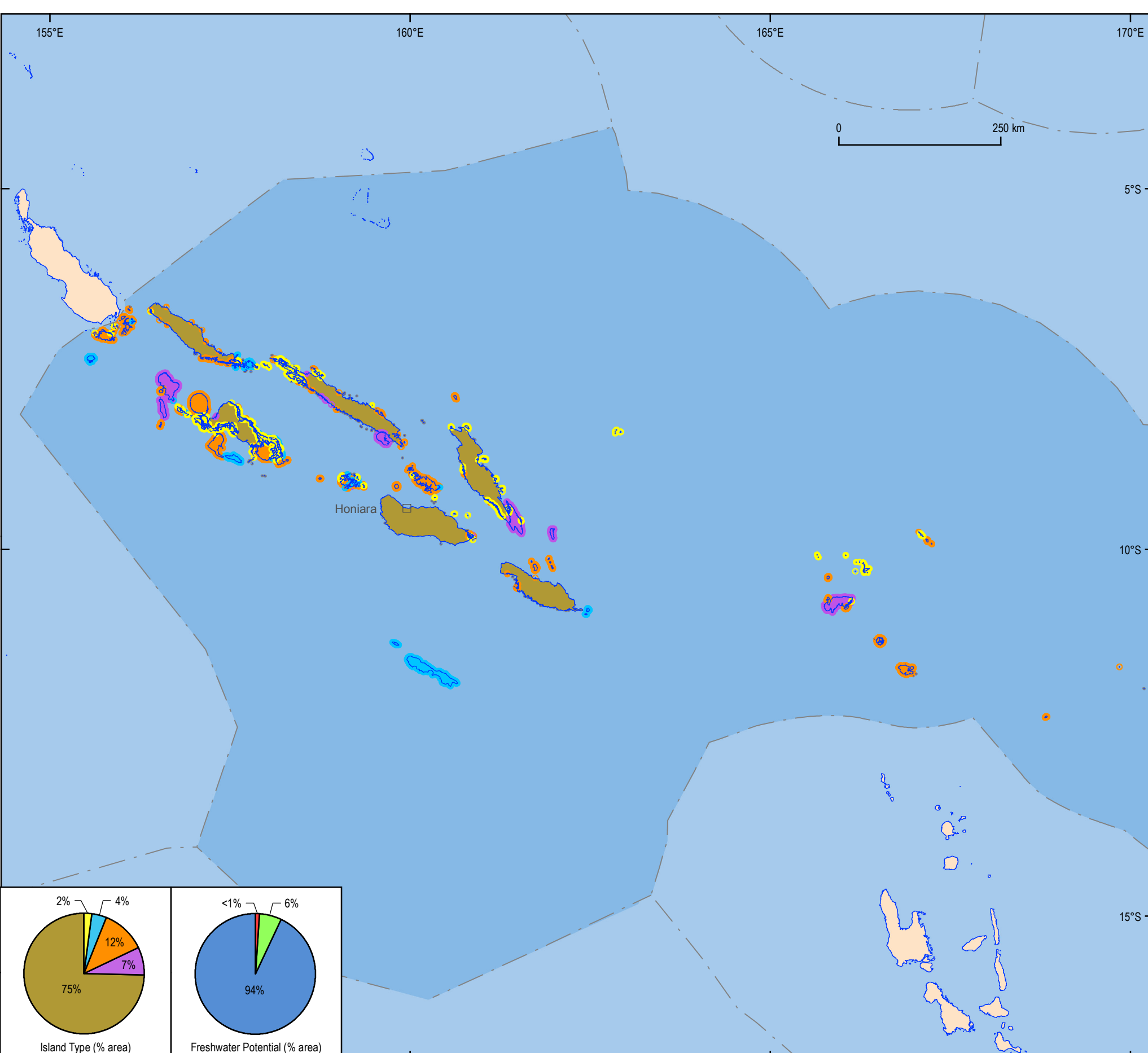
FEDERATED STATES OF MICRONESIA



REPUBLIC OF MARSHALL ISLANDS



SOLOMON ISLANDS



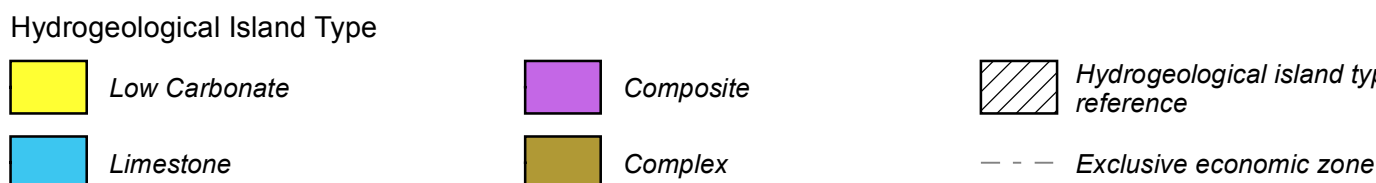
HYDROGEOLOGICAL
ISLAND TYPES OF PACIFIC
ISLAND COUNTRIES

SHEET 6 OF 7

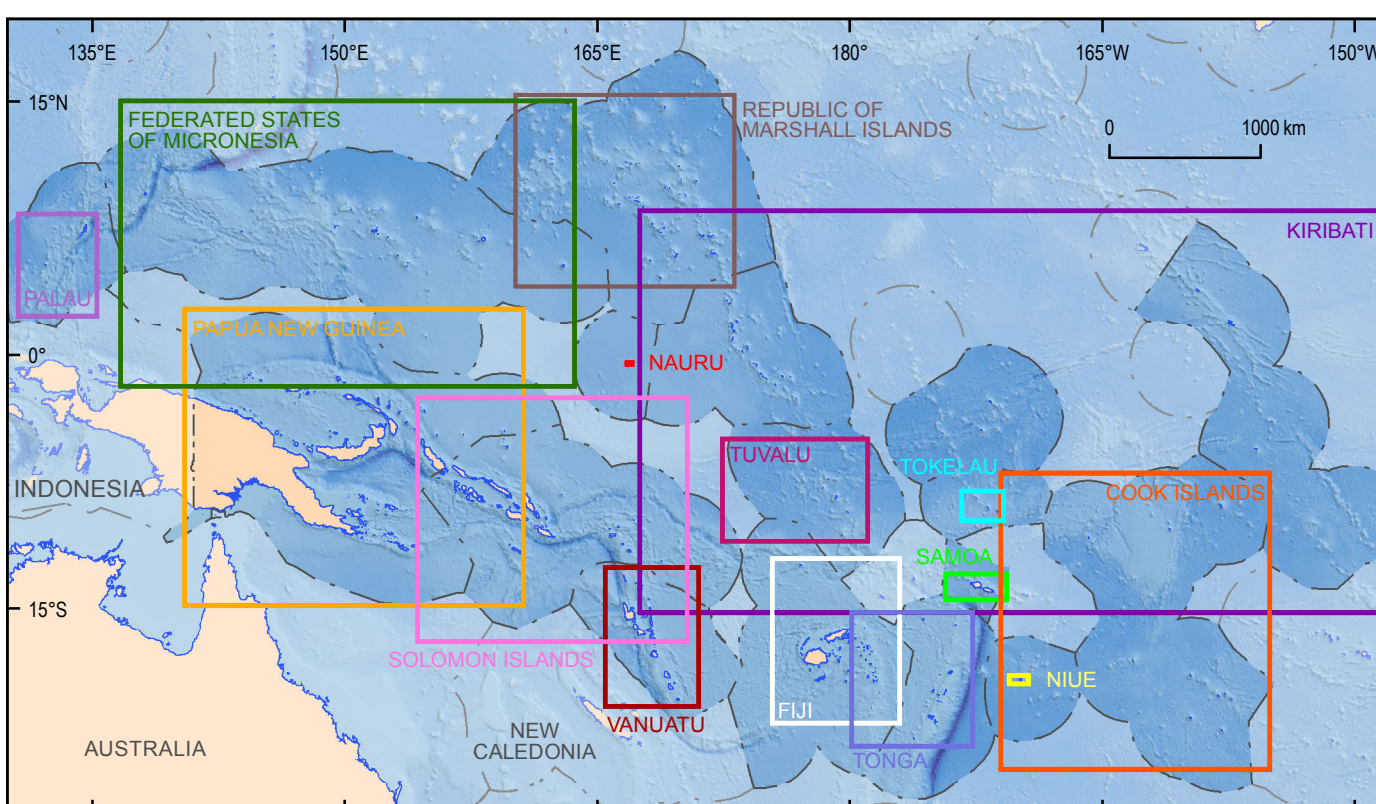
WORLD MERCATOR PROJECTION
WGS84

EXPLANATORY NOTES:

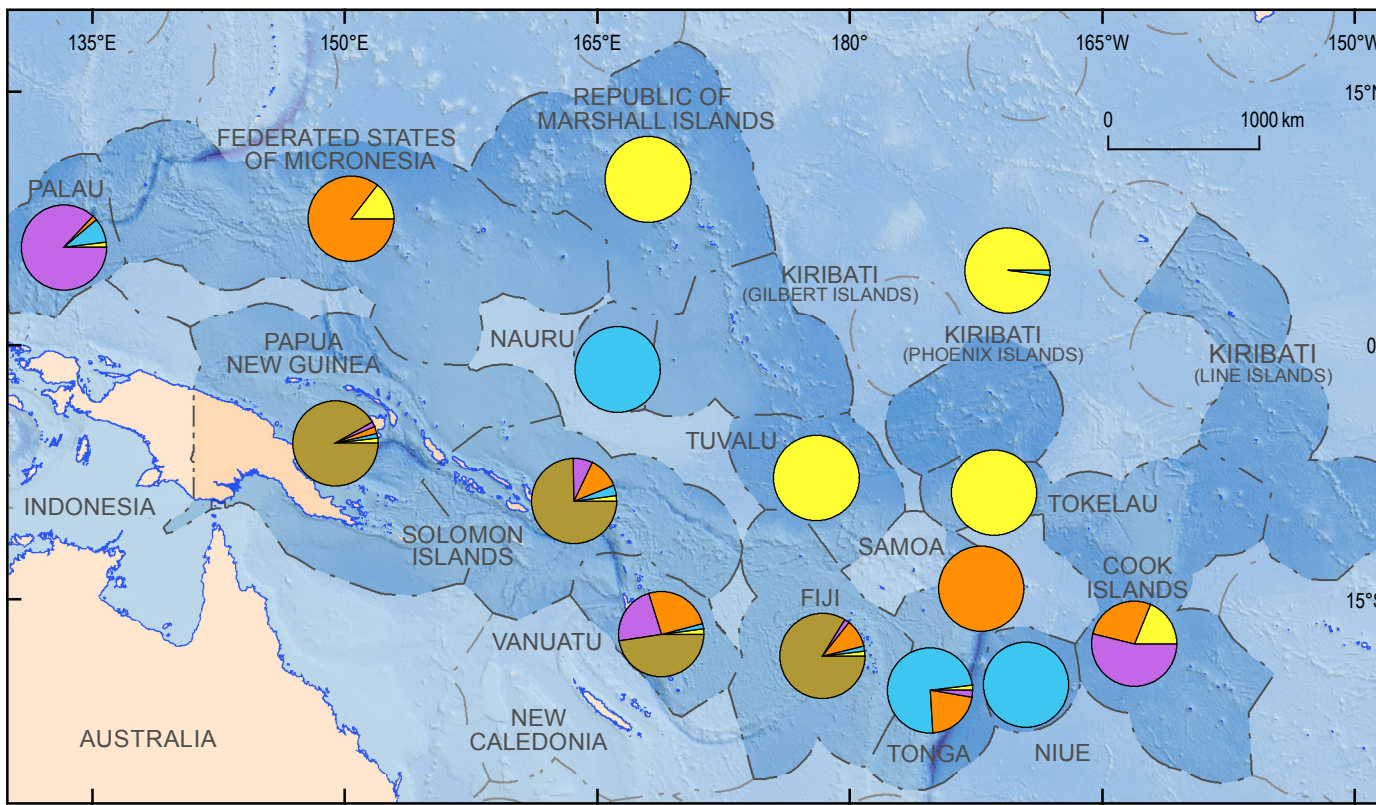
This map shows the distribution of island types based on the hydrogeological characteristics of islands within each of the Pacific Island countries and territories assessed. Each country map is at a different scale in order to best represent the features of the islands. Reference islands are identified in selected country maps which represent the hydrogeological model for each island type (insets a-d). Further details on these islands are described in the companion project report by Dixon-Jain et al. (2014). Inset pie charts show: (1) distribution of island types in each country as a proportion of island area, and (2) distribution of potential for permanent fresh groundwater and surface water in each country as a proportion of island area. The pie charts of freshwater potential provide an indication of the availability of natural freshwater sources in each country, but do not account for actual volumes of available fresh groundwater and surface water, or the relative dependence on these water sources. Island type data from Dahl (1998–2000), multiple literature sources and expert opinion.



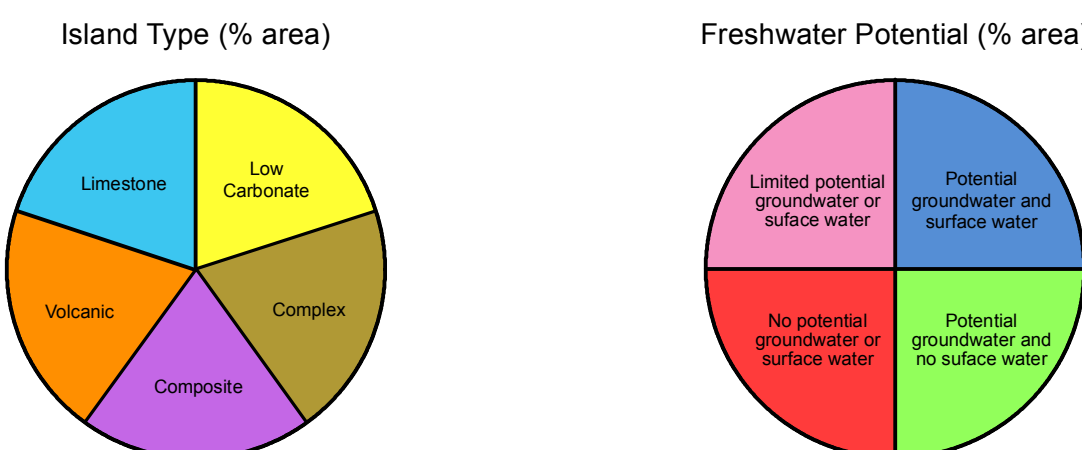
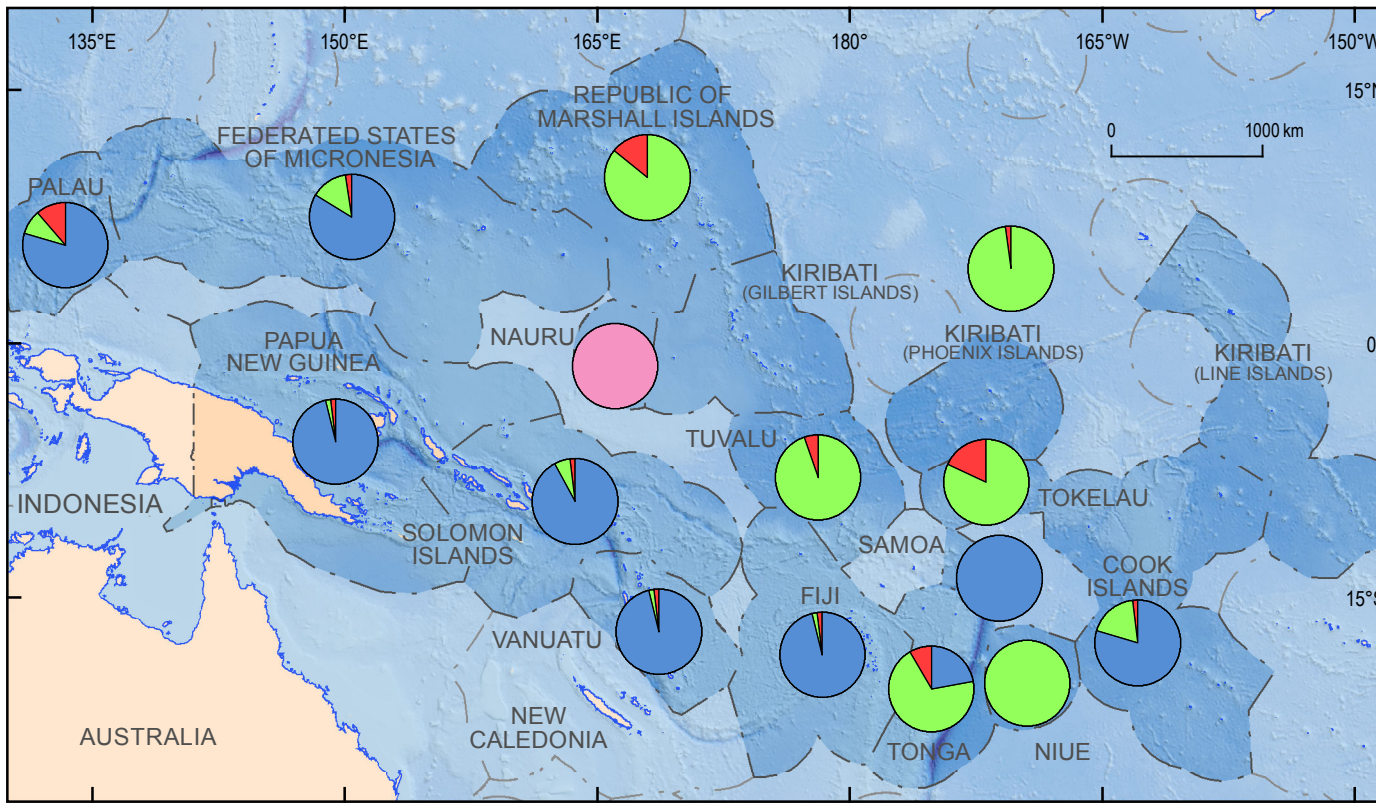
Location of Pacific Island Countries and Territories Assessed



Hydrogeological Island Types



Freshwater Potential



BIBLIOGRAPHIC REFERENCE:

Dixon-Jain, P., Norman, R., Stewart, G., Fontaine, K., Walker, K., Sundaram, B., Flannery, E., Riddell, A., Wallace, L. 2014. Pacific Island Groundwater and Future Climate: First-Phase Regional Vulnerability Assessment. Record 2014/443. Geoscience Australia, Canberra. <http://dx.doi.org/10.11586/Record.2014.043>

ACKNOWLEDGMENTS:

This map has been produced by Geoscience Australia and funded by the Australian Government Department of the Environment under the Pacific-Australia Climate Change Science and Adaptation Planning (PACCSAP) Program.

Expert knowledge was provided by Pacific Island hydrologists (Tony Falkland and Ian White). Input from the Applied Geoscience and Technology Division (SOPAC) of the Secretariat of the Pacific Community is acknowledged. Supplementary data was provided by the Regional Coastal Susceptibility Framework for the Pacific Islands Project team.

Cartography by Veronika Galinec, Products and Promotion, Geoscience Australia.

Background bathymetry image is derived from W.H.F. Smith and D.T. Sandwell, Global Seafloor Topography from Satellite Altimetry and Ship Depth Soundings, Science v 277, pp. 1956–1962, 26 September 1997.

Exclusive economic zone dataset is derived from Exclusive Economic Zones of the World - version 8. VIZ (2014). Maritime Boundaries Geodatabase, version 8. Available online at <http://www.maritimerregions.org>. Consulted on 2014-04-10.

Published by Geoscience Australia, Department of Industry, Canberra, Australia. This map is published with the permission of the CEO, Geoscience Australia.
© Commonwealth of Australia (Geoscience Australia) 2014. With the exception of the Commonwealth Coat of Arms and where otherwise noted, all material in this publication is provided under a Creative Commons Attribution 3.0 Australia Licence <http://creativecommons.org/licenses/by/3.0.au/>.