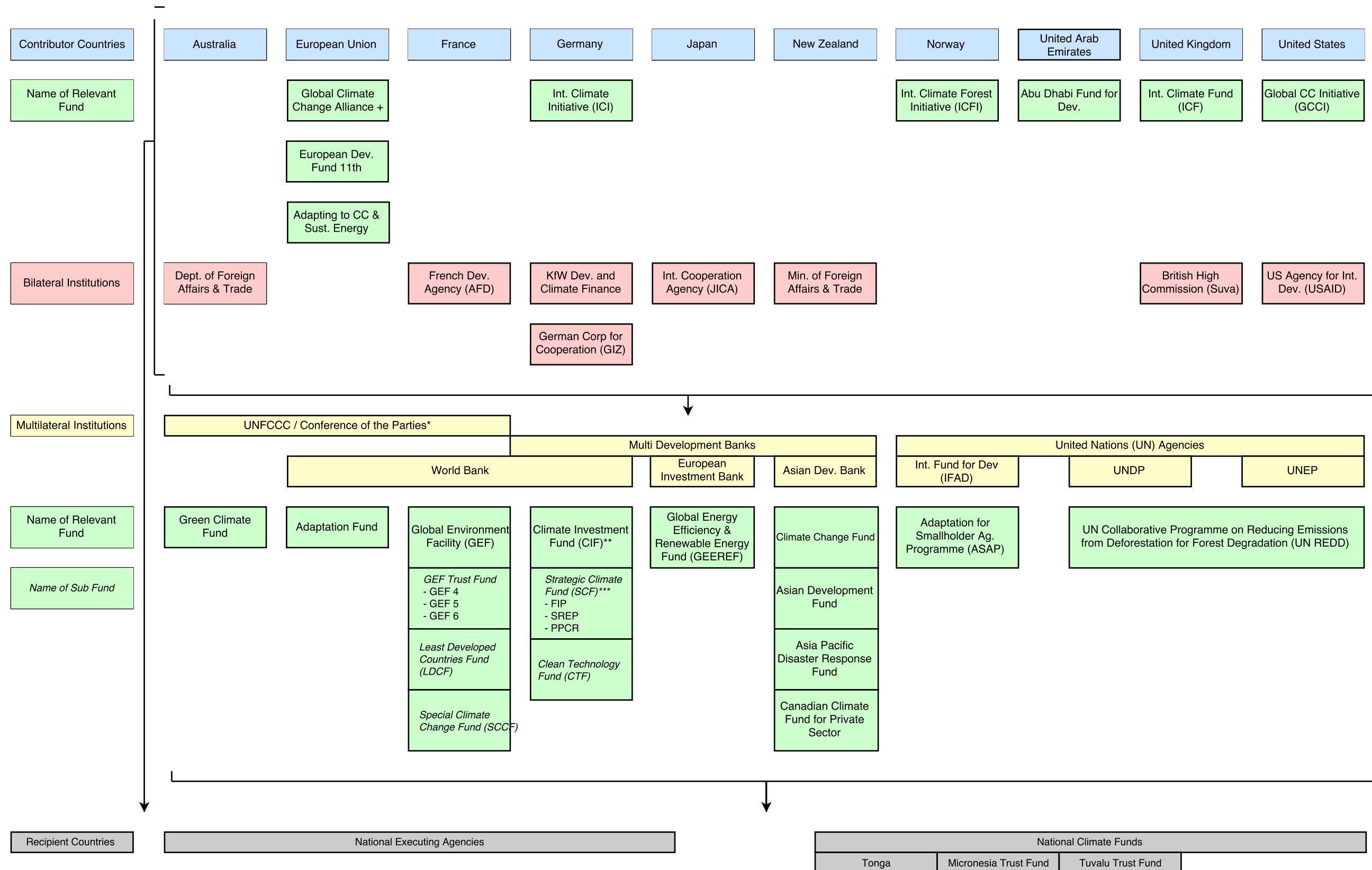


# Selected Donors Relevant to the Pacific



Note: This schematic is intended to capture the major climate finance funds and institutions that play a role in the Pacific, and is not all-inclusive.

\*The UNFCCC established the GCF, AF, and GEF. The WB serves as the trustee of the AF and GEF and administers the CIFs.

\*\*The CIFs are administered by the WB and all subfunds are implemented through the WB, ADB, African Development Bank (AfDB), European Bank for Reconstruction and Development (EBRD), and Inter-American Development Bank (IADB).

\*\*\*The Strategic Climate Fund (SCF) includes the Forest Investment Program (FIP), Scaling Up Renewable Energy Program (SREP), and Pilot Program on Climate Resilience (PPCR).

Information retrieved from [www.climatefundsupdate.org/](http://www.climatefundsupdate.org/)