



EU-GIZ ACSE Project Final Report

Project: Land Use and Coastal Areas Vulnerability Assessments, Kiribati (KI9)

Financing Agreement: 81208394

Agreement Amount - €138,700 (EU-GIZ component only)

Reporting Period – 16th January 2017 – 31 October 2019



KI9 Technical Team members at one of their field trainings

Contents

Introduction	3
1. Strategy	3
1.1 Framing Documents	3
<i>Table 1: Project Framework Documents</i>	4
1.2 Background	4
Objectives	4
Outcomes	5
1.3. Outcome and Outputs	6
<i>Table 2: Outcome and Output Descriptors</i>	6
1.4. Capacity Development Strategy	8
<i>Table 3: Capacity development plan</i>	8
1.5. Major variations and changes in the project	9
<i>Table 4: Project variation documentation</i>	10
2. Cooperation System	11
2.1 Stakeholders	11
<i>Table 5: Project Stakeholders</i>	11
3. Project Steering	14
3.1. Steering Structure	14
<i>Table 6: Steering Committee representatives</i>	14
<i>Figure 1: Project Steering structure</i>	15
<i>Table 7: Kiribati National Expert Group (KNEG) on Climate Change & Disaster Risk Management</i>	16
3.2. Plan of Operations	17
<i>Table 8: Work Plan</i>	17
4. Result Oriented Monitoring	21

Table 9: Project reports and related documents.....	21
Table 10: Project outcomes and outputs achieved validation	23
Table 11: ACSE programme indicators achievements and validation.....	28
To strengthen the PACPs’ capacity to adapt to the adverse effects of climate change and to enhance their energy security at national, provincial and local/community level, addressing the different impact on men and women.....	28
5. Visibility.....	38
Table 12: Project Visibility Products.....	38
6. Annexes.....	39

Introduction

This report is the final report (referred to as Annex 8 in the Financing Agreement) for the project **Land Use and Coastal Areas Vulnerability Assessments, Kiribati (KI9)** funded by the European Union (EU) under the EU-GIZ Adapting to Climate Change and Sustainable Energy (ACSE) Programme. The reporting period covered is 26th of **January 2017 to 31 October 2019**.

The report is structured to align to the GIZ Capacity Development Model and its five Success Factors for capacity development.

These Success Factors as applied under EU-GIZ ACSE are:

- **Strategy:** Summary of project context, objectives, planned activities and outcomes – As embodied in the Project Design Document (PDDs); (*where applicable: Results model; Capacity Development strategy; major variations*)
- **Cooperation systems:** Key, primary and secondary actors;
- **Steering:** Stakeholder participation in implementing and steering the project; attaining project results based on operational planning and monitoring;
- **Processes:** The systems of governance, which underpin project delivery and long term sustainability of results;
- **Learning and Innovation:** Evaluations, knowledge attainment, distillation and sharing of knowledge at programme and project level.

1. Strategy

1.1 Framing Documents

Table 1 presents the framework documents for the project from project conception through to the final amended financing agreement between GIZ and the Government of Kiribati.

This project was varied once during the project cycle to allow for extensive delays with procurements and complexities with managing the project sub-contractor, the Pacific Community.

A comprehensive list of project documents including output and validation products is annexed to this report and have been submitted separately to GIZ.

Table 1: Project Framework Documents

Title
140912 KI9 - Concept Note
141003 KI9 - Concept Note Evaluation
151007 Kiribati Memorandum of Understanding
161206 KI9 - Project Design Document
170215 KI9 - Financing Agreement - 81208394 - English
170215 KI9 - Financing Agreement - 81208394 - German
170215 KI9 - Special Agreement to FA - 81208394
170728 KI9 - GOK-SPC Contract Agreement
191114 KI9 Financing Agreement Amendment Proposal
191201 KI9 – Financing Agreement - Amended

1.2 Background

With the onset impacts of climate change - sea level rise & storm surges it has been the Government priority to position itself (and communities) to undertake land use and coastal vulnerability assessments in order to adapt to changes predicted to occur along Kiribati coastlines.

In order to achieve this competent, the authorities need to enhance their capacity and update their skills to a level that will enable them to use applicable assessment tools and methodology that is appropriate in mapping climatic vulnerabilities of the low-lying islands.

Equally imperative is a need to foster strategies that will maximize engagement of community members to assess and recognize their existing and future vulnerabilities and guide development of appropriate adaptation measures at the local level.

With existing data from earlier exercises housed at respective agencies it is recognized that there is a need to migrate and store relevant datasets for a centralized and accessible datasets for progressing land use and coastal vulnerability assessment for informed adaptations and resilient development.

The project seeks to utilize the next generation of GIS applications as means to geospatially quantify vulnerability to sea level rise and inundation under present and future inundation scenarios. It will focus on bridging the gap on limited expertise in utilizing state-of-the-art tools, methodology and analytical techniques integral of existing land use, physical structures and other community characters. It will at the same develop an improved data management and sharing platform between competent agencies and forums (including the GIS User Group) for a more effective and coordinated mechanism.

The project will explore developing a 'GIS community participation model' that will enable community members the ability to collectively map affected and coastal hazards sites at the village scale. The model will generally work through utilization of basic referencing methodology with the use of geo-referenced maps of area of interest. This model will integrate and further refine to suit local scenarios elements of the GIS community participation toolkit under development by USP PACE-SD.

Objectives

The objective of the project is to:

Strengthen the capacity of government GIS officers and select island communities to undertake land-use and coastal vulnerability assessments.

Outcomes

The planned outcomes of the project are:

1. Strengthened institutional capacity to undertake land use & coastal vulnerability assessments;
2. Land use & coastal vulnerability assessments undertaken on 4 islands; and,
3. Island communities engaged through use of GIS community participation model on at least one of the islands.

1.3. Outcome and Outputs

Table 2 listed the planned outcomes and outputs, related deliverables and a description of each.

Table 2: Outcome and Output Descriptors

	Deliverable	Descriptor
Outcome 1	Strengthened institutional capacity to undertake land use & coastal vulnerability assessments	Infrastructure and technical capability of Government GIS operators to generate land use maps and coastal vulnerability assessments in a streamlined and ordered strengthened.
Output 1.1	1 GIS Platform Upgraded	Government of Kiribati, Geographic Information Systems (GIS) software migrated from a licenced ArcGIS platform to a Quantum GIS (QGIS), open-source geographic information system. The new system includes analytical capabilities to support land use and coastal vulnerability assessments. Computer hardware associated with the system in the Land Management Division of MELAD with Minerals Development Division of MFMRD being upgraded
Output 1.2	1 GIS Data Management System Upgraded	Centralised dataset management system for land use & coastal vulnerability assessment upgraded.
Output 1.3	3 sets of land use & coastal vulnerability data maps produced	GIS operators produce a set of GIS data layers (maps) for 3 islands, each set of data layers integrating elements of sea level/inundation and associated vulnerabilities (determined by data availability).
Output 1.4	1 GIS Decision Makers Workshop held	Coastal management options formulated and presented in a workshop to decision makers, thus also presenting the functionality (scope and limits) of the government's QGIS platform. Decision-makers feedback on priorities and approach and the feedback integrated into GIS operational systems.
Outcome 2:	3 land use & coastal vulnerability assessments GIS trial assessments undertaken, one for each of the 3 trial islands	GIS operators define a risk categorisation system to interpret the maps generated under output 1.3; acquire any additional critical data needed to complete basic assessments, and, match coastal management options with vulnerabilities identified in the mapping exercise, producing preliminary assessment reports as outputs.

Output 2.1	1 set of data acquired for new GIS system complete	GIS operators undertake a gap analysis and acquire (collect or purchase) additional data to allow coastal land uses, coastal vulnerabilities to be adequately mapped to allow analyses to be undertaken.
Output 2.2	1 risk categorization methodology defined	GIS operators develop a risk categorisation system applied to GIS data layers.
Output 2.3	1 set of coastal management options reviewed	GIS operators define a set of coastal management options; consider these options in unison with the vulnerabilities identified in the mapping exercise; and, produce 4 preliminary assessment reports as outputs, one for each case study island.
Outcome 3	1 island community engaged through use of GIS community participation model on at least one of the islands	GIS operators engage 1 island community to help map/validate GIS data sets used to build a set of data sets from which coastal vulnerability assessments can be further refined. The community enhances its knowledge and skills of mapping, GIS and different coastal vulnerabilities; the government defines a community engagement methodology including use of government island-based technicians; and, the government defines a forward plan to operationalise the land use and coastal vulnerability assessment methodologies developed in the project.
Output 3.1	1 Kiribati GIS Community Participation Model developed	GIS operators adapt a community engagement methodology, developed by the University of the South Pacific (USP) to engage coastal communities in mapping and coastal vulnerability assessments, for use in Kiribati.
Output 3.2	1 set of community-based field work completed on 1 island	GIS operators engage 1 community on 1 island, as a trial, to apply and refine the GIS community engagement methodology. The process involves engaging the community in mapping/ground truthing actions and discussing vulnerabilities to help further build and refine GIS data sets.
Output 3.3	1 Long Term Plan to undertake GIS-based land-use and coastal vulnerability assessments developed	Government defines a long-term plan to operationalise the GIS land use and coastal vulnerability assessment methodologies developed in the project through the work plans and operational procedures of relevant departments.

1.4. Capacity Development Strategy

Table 1 presents the project's capacity development strategy. Although not part of the project design process (PDD process), the project team developed a capacity development strategy anyway, for the experience. The strategy, while rather simple, was actually implemented as is demonstrated by the related project outputs.

Table 3: Capacity development plan

Phase	Individuals	Organisations	Society	
	Competence development	Organisational development	Development of cooperation systems	Development of enabling frameworks
SWOT in the area of social concern	<p>A. GIS Officers skills in GIS data management, data collection and mapping and assessment of maps in need of enhancement</p> <p>B. GIS decision makers limited understanding of role of GIS in decision-making process</p>	Need for a central GIS data management system to streamline GIS application processes	Limited community engagement in land use or coastal vulnerability mapping by government GIS officers	
Intended capacities	<p>A. GIS operator skills in application and management of QGIS and engagement with communities to acquire and assess information.</p> <p>B. Knowledge of the strength and weaknesses of QGIS to support land use and coastal vulnerability assessments</p>	Definition of system and training GIS officers in the operation and maintenance of the system	Clearly defined government methodology for engaging coastal communities in GIS actions needed Operational methodology	
Activities	A. Skills training and mentoring			

	B. Hold a decision makers workshop to help them understand the scope of QGIS and to develop their understanding of options for coastal management in the application of GIS.			
Interaction with other levels				
Complementarity activities by other projects/actors in the same line of action				

(Capacity Works Tool 08)

1.5. Major variations and changes in the project

The project financing agreement was varied once at the end of the project. The changes to the financing agreement included:

- a. Request for a no-cost extension to extend the project by 6 months, to allow for the final procurement of IT infrastructure to be completed and outstanding issues with delays in service delivery by the sub-contractor (the Pacific Community - SPC) to be resolved;
- b. Amendment to Outcome 2 – reducing the number of target islands from 4 islands to 3 islands, due to travel complexities (delayed flights, government officers being required for other non-project tasks), which caused significant delays in implementation;
- c. Amendments to the budget cost category allocations - to reflect reductions in personnel costs (as a full-time project manager was not employed for this project until the last 2 months of the project), and due to the formation of an unplanned third party service contract with the SPC; and,
- d. Amendment to the project activity timeline, to reflect the extended contract period.

All changes were consistent with achieving the stated project objective. The related documents to this process are annexed to this report and included in Table 4.

Table 4: Project variation documentation

Report Title
170728 KI9 - GOK-SPC Contract Agreement
191114 KI9 Financing Agreement Amendment Proposal
191201 KI9 – Financing Agreement - Amended

2. Cooperation System

2.1 Stakeholders

Table 5 lists the project stakeholders including *key actors* responsible for decisions and activities related to the implementation of the project, *primary actors*, who were positively or negatively impacted by the project, and *secondary actors* with indirect or temporary involvement in the project.

Table 5: Project Stakeholders

Stakeholder	Organization	Role
Key Actors		
Ms Naomi Biribo Chair	Secretaries Meeting of Executive Agencies - meeting held quarterly	Overall decision making on major policy or political implications of project actions.
The Hon. Dr Teuea Toatu Minister of Finance and Economic Development	Ministry of Finance and Economic Development (MFED), Government of Kiribati	Contracting Party (EU-GIZ ACSE Funds Recipient) May veto the project
Mr Benjamin Tokataake Secretary	National Economic Planning Office (MEPO) within the Ministry of Finance and Economic Development (MFED)	Oversight of financing agreement, project management and financing procedures. Provides guidance to Office of Te Beretitenti (Office of the President)
Mr Eriati Manaima Auditor General	National Audit Office (NAO) within the Ministry of Finance and Economic Development (MFED)	Auditing of project finances mid-term in project. Final audit undertaken by third party.
Mrs Maryanne Mikaere Namakin Secretary	Office of Te Beretitenti (Office of the President), Government of Kiribati	Focal Point in Lead National Agency <i>May veto the project</i>
Ms Taare Uriam Secretary	Ministry of Environment, Lands & Agriculture Development (MELAD)	Head of Implementing Agency <i>May veto the project</i>
Ms Reei Tioti Director	Land Management Division, Ministry of Environment, Lands & Agriculture Development (MELAD)	Project Line Manager, Implementing Agency
Mrs Maryane Mikaere Namakin Chair	Kiribati National Expert Group (KNEG) – meeting held quarterly	The group provides technical advice and guidance on all Climate Change and Disaster Risk Management projects. The group, consisting of departmental secretaries and directors, will advise project outputs and approve adoption of project measures within the government structures. Project activity responsibility lies with the Project Manager and MELAD
Wolf Forstreuter Director	GIS & RS Manager, Geoscience Division, The Pacific Community,	Leads on activity implementation in close association with Project Manager - under sub-contract to the Government of Kiribati

Primary Actors		
Reei Tioti Director of Lands	Land Management Division Ministry of Environment, Lands & Agriculture Development	Project line manager, implementing agency
Tarakabu Tofinga EU-GIZ ACSE In-Country Coordinator (ICC)	Office of the President, Government of Kiribati	Coordinate between MEPO/MFED, OB and MELAD and GIZ. Support the implementation of the technical and financial aspects of the project.
Mareta Kaiteie Senior Sector Economist of the Economic Planning Office - Project Management	Ministry of Finance and Economic Development (MFED), Government of Kiribati	Leads on reporting finances and submission of technical reports to GIZ on behalf of the contracting party.
GIS Officers Government of Kiribati	MELAD and other participating agencies forming the Technical Team including Kabure Yeeting (Principal Minerals Officer MFMRD) Putu Tofinga (Environment Division MELAD) Tiaotin Enari (GIS& RS Officer MELAD) Kirabwa Redfern (Land Planning Officer MELAD) Lawrence Neemia (Coastal Engineer – MISE)	Work collaboratively to undertake project tasks and refine action plans and community participation model with Project Manager and consultant.
Council Clerks Outer-island Makin Island Council and Kuria Island Council as second and third pilot islands respectively	Operating under the Ministry of Internal Affairs (MIA)	The IC will align its Island Development Plans to the objective of the project. ICs are key advisory bodies & will support implementations through extension services for activities implemented at a local level. Particularly relevant to Outcome 3 – refinement of a <i>Community Participation Model</i>
Village Elders Community representatives of Kiebu Islet and Kuria Island	Comprised of Island Councillor and Traditional leaders	The group support the project to perform their traditional obligations of protecting community welfare playing a key decision making role at the community level & possess the local knowledge & experience. They are crucial players in the initial planning & implementation phase of the project at the local and village level. Particularly relevant to Outcome 3 – refinement of a <i>Community Participation Model</i>
Women and Youth of Kiebu Islet (Makin Island) & Kuria communities	Comprised of selected women and youth groups on the islet	The group may lack the technical skills or financial capacity to assess their vulnerability but rich in the local knowledge & experiences, which the project can put to best use. Particularly relevant to Outcome 3 – refinement of a <i>Community Participation Model</i>

Church communities of Kiebu Islet (Makin Is) & Kuria Island	This include representative from the 2 dominant churches on the islet	The group has a best interest in the issue having high expectations for successful project outcomes. The Group doesn't have the technical and financial means to assess their own vulnerabilities however influential in the decision making processes at the island level that can be considered crucial for project implementations.
Civil Societies	This includes the women and youth groups	The group can offer support & contributions in terms of advices based on local knowledge & experiences.
Mr Choi Yeeting National Authorising Officer and Focal Point supporting ICC	Office of the President, Government of Kiribati	Climate Change project focal point and thus support officer to Secretary of the Office of the President for the ACSE project.
Mr Tiaotin Enari Senior GIS Officer	Land Management Division, Ministry of Environment, Lands & Agriculture Development (MELAD)	GIS officer with the Division of Lands and advisor to Director on GIS infrastructure, Land Management Division in MELAD on this project
Secondary Actors		
Community members of Kiebu Islet & Kuria Island involved in the GIS participatory mapping exercise	This include men, women and youth	Be involved in consultations relating to the acquisition of GIS spatial information and in the design of the GIS community engagement model under Outcome 3.
Kiebu Islet (Makin Is) &	Men, Women & youth of Kiebu islet	Be involved in GIS participatory mapping exercise for acquisition of community-based information to integrate with of other GIS spatial information
Kuria Island Community members	Men, Women & youth of selected community (to be confirmed)	Be involved in GIS participatory mapping exercise for acquisition of community-based information to integrate with of other GIS spatial information
<p>Note:</p> <p>Key actors are responsible for decisions and activities related to the implementation of the project,</p> <p>Primary actors are actors which are positively or negatively affected by the project;</p> <p>Secondary actors have indirect or temporary involvement with the project.</p>		

3. Project Steering

3.1. Steering Structure

The actors who provide an important impetus for achieving sub-objectives, who are responsible for achieving objectives and sub-objectives of the project or who make political decisions participate in the steering structure of the project.

The function of this structure is to enable steering tasks to be performed, such as (e.g.) strategy, planning, coordination, control, monitoring, resource management and conflict management.

Table 6 shows participants of the steering structure that participated in the decision making process (e.g. working groups) or who had a formal direct responsibility for decisions (e.g. steering meetings) in the steering of the project.

Table 6: Steering Committee representatives

Steering participants		
	Participation	Responsibility
Secretaries Meeting of Executive Agencies	Project steering at a high level for major issues only	Approval of Strategy and major variations
Office of Te Beretitenti	Operational steering with support of ICC	Planning, coordination and conflict management
Ministry of Finance and Economic Management (MFED) The sections of ministry with project responsibilities are: Minister and Department of Finance – Project Finance Agreement oversight, reporting and financial control National Environment Project Office (DEPO) – general project oversight National Audit Office (NAO) – periodic financial auditing of project	Part of KNEG steering and project operational steering	Financing Agreement oversight, finance and technical reporting to Secretaries meeting and GIZ
Kiribati National Expert Group (KNEG) The group, consisting of departmental secretaries and directors, will advise project outputs and approve adoption of project measures within the government structures.	Project steering committee for major outputs	The group provides technical advice and guidance on all Climate Change and Disaster Risk Management projects.
Land Management Division, Ministry of Environment, Lands & Agriculture Development (MELAD) Includes operational team: Project Manager GIS staff (including those from other line ministries) Pacific Community Geoscience Division working under sub-contract EU-GIZ ACSE In-Country Coordinator	Leads Operational-level steering for activities and deliverables	Implementing Partner responsible for project activities, deliverables and reporting to MFED and OB as well as coordination of operational team/steering and sub-contracting to Pacific Community.

Figure 1 graphically presents an overview of the main components of the steering structure for the project.

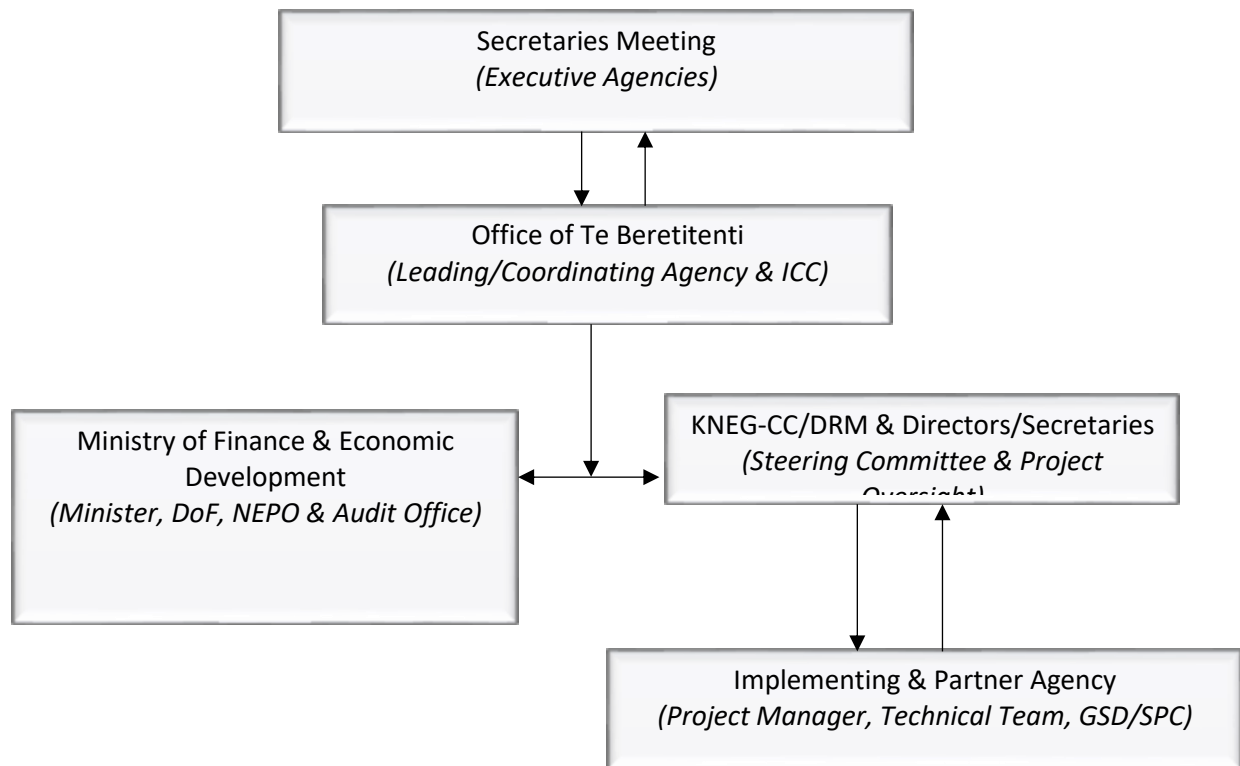


Figure 1: Project Steering structure

Table 7 lists the KNEG membership including representation of men and women - Female – 12, Male - 9

Table 7: Kiribati National Expert Group (KNEG) on Climate Change & Disaster Risk Management

Organization/Rep	Designation
OB	
Choi Yeeting	Climate Change Officer/KNEG Secretariat
Michael Foon	Disaster Risk Management Officer/KNEG Secretariat
Takena Redfern	Project Coordinator; Building Safety & Resilient Project (BSRP)
Tarakabu Tofinga	In Country Coordinator; EU-GIZ Adapting to Climate Change & Sustainable Energy (ACSE) Programme
MELAD	
Taouea Titaake Reiher	Ag. Director; Environment & Conservation Division
Kinaai Kairo	Director for Agriculture & Livestock Division
Reei Tioti	Director of Lands
Marii Marae	Senior Environment Officer (Climate Change)
MPWU	
Renate Willie	Water Engineer; Water & Sanitation Engineering Unit
Kireua B. Kaiea	Energy Planner; Energy Planning Unit
Director (Civil Engineering)	Civil Engineering Division
MFED	
Director	National Economic Planning Office
Republic Statistician	National Statistics Office
MOH	
Tebikau Nooran	Director; Environmental Health
MOE	
Anee Teiaua	Senior Lecturer; Kiribati Teachers College
CDU Director	Curriculum Development Unit
MFMRD	
Kabure Yeeting	Mineral Officer; Geology & Coastal Management Division
Karibanang Aram	Ag. Director; Fisheries Division
MWYSA	
Ane Kautu	Social Welfare
MET Office	
Ueneta Toorua	Chief Meteorological Officer
NGOs	
Pelenise Alofa	USP & KiriCAN (GCCA Projects)
Toaki Arinoko	USP (USAID/CCAP Project)
Ueraoi Taniera	Kiribati Red Cross Society
Bibiana Bureimoa	Live& Learn (CC Project)

3.2. Plan of Operations

Table 8 presents the final project work plan as the project team implemented it.

Table 8: Work Plan

			2017				2018				2019		
Ref. #	Description	Responsibility	Q1	Q2	Q3	Q4	Q1	Q2	Q3	Q4	Q1	Q2	Q3
1	Outcome 1: Strengthened institutional capacities to undertake land use-coastal vulnerability assessment												
1.1	Output 1.1: GIS platform upgraded												
1.1a)	Activity: Internal assessment of current institutional capacity including GIS platform to determine its compatibility for possible upgrading	GEM/SPC											
1.1b)	Activity: Initiation workshop to implementing agencies on the key processes and activities for undertaking vulnerability assessments	GEM/SPC & KNEG + GIS users											
1.1c)	Activity: Design & deliver a training module on relevant GIS platform for vulnerability assessment & use of a real-world application at targeted islands	GEM/SPC & Technical team											
1.2	Output 1.2: GIS Data Management System Upgraded												
1.2a)	Activity: Review data management systems and recommend a cost effective system	GEM/SPC											
1.2b)	Activity: Acquire & install the data management system & migrate data into system.	GEM/SPC & ICC											
1.2c)	Activity: Train staff in use of new system with its design, use and management.	GEM/SPC											
1.3	Land Use & Coastal Vulnerability Maps Produced												
1.3a)	Activity: Develop land use maps using existing data sets, providing training and insights to the process as the mapping progresses.	GEM/SPC & Technical Team											

1.3b)	Activity: Produce a forward plan of action beyond the life the project which is formally adopted into work plans by relevant Ministries	ICC & GIZ/KI9 advisor												
1.4	Output 1.4: GIS Decision makers workshop													
1.4a)	Activity: Present potential of new GIS platform to integrate new wave of technical advancements for coastal land use mapping	GEM/SPC & Technical Team												
1.4b)	Activity: Outline steps involved in undertaking coastal land use vulnerability assessments with current capacity of GoK	GEM/SPC & Technical Team												
1.4c)	Activity: Present the proposed GIS community participation model for community involvement in assignment (being trialed by the ACSE project)	ICC & Technical Team												
2	Outcome 2: Coastal-land use vulnerability assessments													
2.1	Output 2.1: Data acquisition													
2.1a)	Activity: Understand data requirements for mapping sea level change, tidal inundation and storm surge in Kiribati.	GEM/SPC & Technical team												
2.1b)	Activity: Review current data sets within the country and those available (and affordable) from other sources which could underpin this work	GEM/SPC & Technical Team												
2.1c)	Activity: Develop a plan of action for GoK staff to produce data layers based on availability of relevant data sets, within the life of the project.	GEM/SPC & Technical Team												
2.2	Output 2.2: Risk categorization & application to available data													
2.2a)	Activity: Understand nature of assigning risk categories & define risk categories for specific coastal features	GEM/SPC & Technical Team												
2.2b)	Activity: Develop relevant layers and apply risk to project target sites	GEM/SPC & Technical team												

2.3	Output 2.3: Coastal management options review												
2.3a)	Activity: Explore benefits & costs of different coastal management options and integrate with GIS-based vulnerability assessments.	GIZ/ki9 advisor, ICC & Tech. Team											
2.3b)	Activity: Secure an opportunity to learn how other country is actively planning for and addressing coastal management problems	ICC & GIZ/ICC Tech. team											
3	Outcome 3: Kiribati GIS community Participation Model												
3.1	Output 3.1: GIS Community Participation Model												
3.1a)	Activity: Review the draft Participation Model & build in relevant elements from the USP community engagement toolkit, define core elements	ICC & GIZ/Ki9 advisor											
3.1b)	Activity: Trial the draft model & resourcing with participating communities, collating feedback on the model reflecting in the model structure	ICC & Technical Team											
3.2	Output: Community fieldwork												
3.2a)	Activity: Review data available for participating island and gather additional information to develop data layers for the vulnerability assessment	GEM/SPC & Tech. Team											
3.2b)	Activity: Develop a template, and map the capacity of participating community for refinement of the Community Participation model.	ICC & GIZ/Ki9 advisor											
3.2d)	Activity: Hold community workshop on GIS mapping and vulnerability assessments,	ICC & Tech. Team											
3.2e)	Activity: Input data to management system to update relevant GIS layers for producing relevant maps	Technical Team											
3.3a)	Activity: Hold a project evaluation workshop to reflect on the project's successes and failures and to draft recommendations for future application	ICC & GIZ/Ki9 advisor											
3.3b)	Activity: Consolidate a resourced action plan to formally adopt the project outcomes into government structures	ICC & GIZ/Ki9 advisor											

3.3c)	Activity: Produce a 2 year GIS Action Plan clearly budgeted for adoption into position roles and responsibilities and work plans	ICC & GIZ/Ki9 advisor											
3.3d)	Production of a compendium of project relevant products for government and donors	ICC & GIZ/Ki9 advisor											
	Project Monitoring & Evaluation (Quarterly/Annual)	ICC & GIZ/Ki9 advisor											
4.0	Project preparation for audit	ICC & GIZ/Ki9 advisor											

4. Result Oriented Monitoring

Table 9 below lists all project deliverables including Annex 7 technical reports, workshop reports of all kinds, policies, plans, manuals, guidelines, project evaluation reports and consultancy reports in chronological order.

Table 9: Project reports and related documents

Project outputs
170731 KI9 - Annex 7 Technical Progress Report No.1
170829 KI9 - GIS Applications and Assessment - SPC Mission TOR
170830 KI9 - GIS Applications Seminar Participants List
170830 KI9 - GIS Applications Seminar Report
170904 KI9 - Institutional Capacity Assessments & Situation Report
170911 KI9 - GIS Applications and Assessment - SPC Mission Report
171211 KI9 - Gender Workshop ToR
171212 KI9 - Gender Planning Workshop Participants List
171212 KI9 - Gender Planning Workshop Report
180101 KI9 – Brochure – Project Overview - English
180101 KI9 – Brochure – Project Overview - Kiribati
180201 KI9 - Annex 7 Technical Progress Report No.2
180301 KI9 - Banner - Project Promotion
180301 KI9 - Tab North Trip 1 - Project Planning TOR
180310 KI9 - Quantum Leap Week Visibility Report
180326 KI9 - Tab North Trip 1 - Project Planning Report
180629 KI9 - Tab North Trip 2 - GIS Training Exercise TOR
180630 KI9 - Tab North - Trip 2 - GIS Training Exercise Participants List
180630 KI9 - Tab North - Trip 2 - GIS Training Exercise Report
180725 KI9 - Coastal Management Workshop TOR
180731 KI9 – Arthur Webb Coastal Workshop Services Contract
180810 KI9 - Coastal Management Workshop Participants List
180810 KI9 - Coastal Management Workshop Report
180820 KI9 - Annex 7 Technical Progress Report No.3
180829 KI9 - Makin Trip 1 - GIS Training Exercise TOR
180830 KI9 - Makin Trip 1 - GIS Training Exercise Participants List
180830 KI9 - Makin Trip 1 - GIS Training ICC Trip Report
180920 KI9 - North Tarawa Trip 1 - 3D Map Modelling Report
180920 KI9 - North Tarawa Trip 1 - 3D Mapping Exercise Participants List
180922 KI9 - Kuria Trip 1 - GIS Training Exercise TOR
180923 KI9 - Kuria Trip 1 - GIS Training Exercise Participants List
180923 KI9 - Kuria Trip 1 - GIS Training Exercise Report
180925 KI9 - QGIS Change Detection Manual
181001 KI9 - Poster - Vulnerability and Coastal Change
181017 KI9 - North Tarawa Trip 2 - Coastal Landuse Mapping Workshop TOR

181018 KI9 - North Tarawa Trip 2 - Coastal Landuse Mapping Workshop - Synthesis Report
181023 KI9 - Peer Learning Workshop Lessons Learnt Report
181023 KI9 - Peer Learning Workshop Project Presentation
181120 KI9 - Coastal Risk Categorisation Workshop TOR
181121 KI9 - Coastal Risk Categorisation Workshop Presentation
181121 KI9 - Coastal Risks Categorisation Workshop Participants List
181121 KI9 - Coastal Risks Categorisation Workshop Report
190101 KI9 - Poster - Tab North Project Results - A1 Size
190222 KI9 - Annex 7 Technical Progress Report No.4
190329 KI9 - Makin Trip 2 - GIS Training Exercise TOR
190401 KI9 - Makin Trip 2 - GIS Training Exercise Synthesis Report
190411 KI9 - Community Feedback Results Field Missions TOR
190419 KI9 - Tab North Trip 3 - Community Feedback Results Presentation
190426 KI9 - Makin Trip 3 - Community Feedback Results Presentation
190516 KI9 - Final Project Evaluation ToR
190516 KI9 - Project Results Mission Report - Combined
190517 KI9 - Financing Agreement Amendment Proposal
190617 KI9 - Guide to GIS Community Participatory Mapping - A Framework
190830 KI9 - Land Management Division Infrastructure Upgrade Report
190901 KI9 - Annex 7 Technical Report No.5
190906 KI9 - Final Skills Assessment Report
190912 KI9 - Letter of Commitment to Long Term Plan
191014 KI9 - Handing Over Press Release and Images
191014 KI9 - Assets Register
191014 KI9 - Project Handover Report
191115 KI9 - Annex 7 Technical Report No.6
191116 KI9 – Financing Agreement Amendment
191120 KI9 – Final Evaluation Report
191125 KI9 – Final Project Report

Table 10 evaluates the project success against the monitoring and evaluation plan. Further detailed assessment is presented in the *Final Project Evaluation Report*.

Table 10: Project outcomes and outputs achieved validation

Outputs	Indicator	Baseline	Target	Total Achieved	Validation
Output 1.1 GIS Platform Upgraded Upgrade the government's existing GIS system using a cost-effective, open-source and compatible platform.	Upgraded GIS platform with analytical capability for vulnerability assessments	Inadequate capability of existing GIS applications for land use & coastal vulnerability assessment	A cost-effective and compatible GIS platform for stable land use & coastal vulnerability assessment	New server system purchased and installed at Lands Office. Migration of datasets and harmonization of GIS system with Kiribati Land Information System (KLIS)	<i>190830 KI9 - Land Management Division Infrastructure Upgrade Report</i>
Output 1.2 GIS Data Management System Upgraded The current GIS data management system is reviewed and a new system installed that integrates GIS information gathered, used, and housed in other agencies.	Centralized dataset system for land use & coastal vulnerability assessment established & upgraded	Existing dataset and baseline information housed at other department	A data management system in place that fully integrate existing dataset	Migration of newly acquired and existing datasets onto new server system completed	<i>190830 KI9 - Land Management Division Infrastructure Upgrade Report</i>
Output 1.3 Land Use & Coastal Vulnerability Maps Produced The GoK has identified a strong need to progress	Land use maps integrating elements of sea level/inundation vulnerabilities for the islands covered under project	Absence of land use & coastal vulnerability maps for most of the islands	Number of land use & vulnerability maps produced and adopted for the covered islands by end of project	Individuals island reports incorporating coastal land use vulnerability maps to be developed based on conducted field assessment	180923 KI9 - Kuria Trip 1 - GIS Training Exercise Report

the mapping of coastal land uses and hazards on selected islands and to use these as the basis for developing coastal vulnerability assessments.					180630 KI9 - Tab North - Trip 2 - GIS Training Exercise Report 190401 KI9 - Makin Trip 2 - GIS Training Exercise Synthesis Report
Output 1.4 GIS Decision Makers Workshop Facilitated Government decision makers including technical and non-technical groups or personnel, need to be made aware scope of Project and to calibrate expectations and action plans for the project.	Relevant stakeholders & decision makers fully informed on status of GIS infrastructure & role in project implementation	Decision makers and key stakeholders are unaware on potentials of new system and its applicability	A workshop is conducted with decision makers & technical personnel understand new system & endorse the community participation model for implementation	Workshop conducted	170830 KI9 - GIS Applications Seminar Report
Output 2.1 Data Acquisition This will enable GoK to acquire for collation relevant dataset to necessitate progressing of vulnerability mapping with ability to map sea level rise, tidal inundation and storm surge.	Relevant dataset acquired and readily available to necessitate assessment works	Dataset scattered with uncertainty on available baseline data for initiating work	Key agencies have access to relevant dataset by start of assessment phase	SPC has identified and collated existing dataset necessary for coastal mapping exercises stored with Lands office server system	170904 KI9 - Institutional Capacity Assessments & Situation Report 170911 KI9 - GIS Applications and Assessment - SPC Mission Report

<p>Output 2.2 Risk Categorization & Application to available data</p> <p>This will integrate coastal vulnerability assessment outcomes and defining risk categories for specific sites.</p>	Coastal management options not integrating GIS based vulnerability assessments	Best coastal management options determine at specific vulnerable area toward end of project	Risk categorization established and applied by end of project	Risk categorisation workshop conducted November 2018. The documented outcome of workshop will be used to integrate the GIS based assessments with the bests management options	<p>181121 KI9 - Coastal Risks Categorisation Workshop Report</p> <p>181121 KI9 - Coastal Risk Categorisation Workshop Presentation</p>
<p>Output 2.3 Coastal Management Options reviewed</p> <p>The mapping of vulnerability is an important step for a government confronted with the threat of sea level rise and coastal inundation. Decision makers need to feel confident that they are abreast of the coastal management options available to them to address these challenges</p>	Trainee familiarity with coastal management options	Trainees unfamiliar with coastal management options	Trainees able to readily identify 3 coastal management options that are 'fit for purpose' in project case study situations.	Coastal management workshop conducted in August 2018 to enhance understanding of trainees on the concept to enable them to identify best management options for the different coastal features	180810 KI9 - Coastal Management Workshop Report
<p>Output 3.1 Kiribati GIS Community Participation Model (refined for testing)</p> <p>The project will explore avenues to undertake</p>	A GIS community participation model is utilized at the community level	Existing toolkits adapted into an applicable GIS community participation model	<p>An innovative GIS community participation model adapted to meet respective community requirement</p> <p>Utilizing a GIS community participation</p>	Three GIS community participation exercises conducted to test model with information acquired embedded into vulnerability model for the target islands.	<i>190617 KI9 - Guide to GIS Community Participatory Mapping - A Framework</i>

GIS mapping of coastal hazards at a village scale.			model for community members irrespective of their gender	The model proved useful with verification of findings where local knowledge collaborates with scientific assessments.	180920 KI9 - North Tarawa Trip 1 - 3D Map Modelling Report 180923 KI9 - Kuria Trip 1 - GIS Training Exercise Report 180630 KI9 - Tab North - Trip 2 - GIS Training Exercise Report 190401 KI9 - Makin Trip 2 - GIS Training Exercise Synthesis Report
Output 3.2 Community Fieldwork completed Strengthen skills of implementing agencies, participating island governments with communities in GIS data acquisition to mapping coastal risks using the GIS community participation model.	Land use & coastal assessment conducted at the selected project islands	Existing maps not capturing elements of land use & coastal vulnerability	Number of land use & coastal vulnerability assessment is conducted on 4 islands with vulnerability maps established for covered islands	Three community field exercises conducted entailing coastal & land use assessments with maps produced as part of the individual island reports.	180920 KI9 - North Tarawa Trip 1 - 3D Map Modelling Report 180923 KI9 - Kuria Trip 1 - GIS Training Exercise Report 180630 KI9 - Tab North - Trip 2 - GIS Training Exercise Report 190401 KI9 - Makin Trip 2 - GIS Training Exercise Synthesis Report

<p>Output 3.3 Longer Term Plan Developed</p> <p>Develop an agreed operational framework for government which integrates the project results and prioritises the next action steps for MELAD, and others, where appropriate, beyond the life of the project.</p>	<p>Project evaluation report produced capturing way forward on future GIS technicians & vulnerability assessment</p>	<p>Project timeframe is fixed for a 2 year work plan</p>	<p>Project evaluation report compiled at end of project with recommendation for sustainability of & future project</p>	<p>The longer term plan for the Land Management Division, MELAD was not achieved.</p> <p>This reason was a lack of institutional support within LMD, partly due to a change in management after the project was formulated, and partly due to issues with the SPC sub-contractor which lost the project team support from the LMD director.</p>	<p>190912 KI9 - Letter of Commitment to Long Term Plan</p>
--	--	--	--	---	--

Table 11 presents the project contributions to the EU-GIZ ACSE programme level indicator table.

Table 11: ACSE programme indicators achievements and validation

	Intervention logic	Objectively verifiable indicators of achievement	Indicator Definition or Remarks	Target	Achievement	Validation
General objective	Enhance sustainable livelihoods in Pacific ACP countries (PACPs)	<ul style="list-style-type: none"> All PACP countries have improved on their MDGs / Sustainable Development Goals 	<p>Yes – improved.</p> <p>Refer to SDGs table.</p>	NA to project reporting		
Programme purpose	To strengthen the PACPs' capacity to adapt to the adverse effects of climate change and to enhance their energy security at national, provincial and local/community level, addressing the different impact on men and women	<ul style="list-style-type: none"> Number of interventions successfully implemented at national, provincial and local/community level 	<p>'Successfully implemented' means that the Intervention has been put in place and validated through appropriate documentation.</p> <ol style="list-style-type: none"> Governance instruments Water infrastructures Livelihood infrastructures Climate-proofing infrastructures Solar infrastructures Biogas infrastructures RE Institutional infrastructures FAESP - Administrative Systems FAESP - Legislative instruments Coordination/Cooperation interventions Gender Balance interventions 	NA to project reporting		

		Increased availability of regional and national technical support (RTSM)	'Increased availability' means there are more technical personnel are registered with RTSM	NA to project reporting		
		Proportion of women and men in climate change decision-making bodies		Kiribati National Environment Group (KNEG)	KNEG provides technical advice and guidance on all Climate Change and Disaster Risk Management projects in Kiribati. The group, consists of departmental secretaries and directors, will advise project outputs and approve adoption of project measures within the government structures. The membership is: Female – 12 Male - 9	191028 KI9 - Kiribati National Environment Group - Overview
		Number of interventions which promote the involvement of women in climate change	'Promoting involvement of women' means measurable actions taken in a project. These may include gender assessment/study and analysis, or	2	4 interventions in total:	171212 KI9 - Gender Planning Workshop Report

		adaptation / sustainable energy management processes	workshops/trainings, or establishment of a body with fair participation and or carrying out relevant event.		1 Gender planning workshop 3 gender-balanced community participatory mapping exercises but also including female GIS technicians as part of the government training team	180630 KI9 - Tab North - Trip 2 - GIS Training Exercise Report 180923 KI9 - Kuria Trip 1 - GIS Training Exercise Report 190401 KI9 - Makin Trip 2 - GIS Training Exercise Synthesis Report
Expected results	Result 1: Enabling environment and communities' adaptive capacity to cope with climate change challenges, including gender specific challenges, are enhanced	<ul style="list-style-type: none"> At least one CCA project in at least eight PACP implemented by end of 2018 	'Implemented' means all on groundwork completed.	1	0 Project concluded 31 October 2019	191116 KI9 – Financing Agreement Amendment
		At least 75% of national implementation partners on the regional EU-GIZ ACSE steering committee agree that adaptive	'Capacity' means the ability of people, organisations and societies to manage their own sustainable development processes and adapt to climate change. This includes recognising obstacles to	NA at project level reporting		

		capacity has been enhanced	<p>development, designing strategies to tackle them, and then successfully implementing these.</p> <p>Multilevel approach:</p> <p>Individual competence e.g. trainings, workshops, mentoring</p> <p>Organisational development e.g. policies, plans, establishments of new work unit - REGIONAL, NATIONAL, PROVINCIAL AND VILLAGE LEVEL</p> <p>Development of cooperation and partnerships e.g. commission, bilateral partnership through formal partnership with MoU - ALL LEVEL</p> <p>Development of enabling frameworks e.g. legislations - National Level</p>			
		Number of (new or reviewed) national, provincial and local policies, strategies, plans integrating CCA *	<p>‘ New or reviewed’ products</p> <p>‘integrating CCA’ means only relevant pre-approved products produced by the projects</p>	1	1	190701 KI9 - Letter of Commitment to Long Term Plan
		Number of improved water infrastructures linked to the mitigation of and/or adaptation to climate change*	<p>Only infrastructures improved through the projects.</p> <p>‘Intervention’ is the establishment of functioning system of the infrastructure.</p> <p>‘Improved’ means capacity of supply increased, security of supply enhanced,</p>	NA		

			<p>sustainability of management improved, robustness of design, and sustainability of supply.</p> <p>The result of the improved infrastructure is enhanced adaptation to climate change</p>			
		<p>Number of improved food production systems linked to the mitigation of and/or adaptation to climate change</p>	<p>‘Improved food production system’ means capacity of food production supply increased, security of food production supply enhanced, sustainability of food production management improved, robustness of food product system design, sustainability of food production systems supply.</p> <p>The result of the improved infrastructure is enhanced adaptation to climate change</p>	NA		
		<p>Number of climate-proofed infrastructures linked to the mitigation of and/or adaptation to climate change</p>	<p>‘Climate- proofed infrastructures’ examples are:</p> <ul style="list-style-type: none"> - Cyclone proofed e.g. Vanuatu; - Australian standard design for cyclone rating for water and solar infrastructures design and house design ; - Longevity of system (durability) in harsh environment e.g. Kiribati; 	NA		

			- Seawall and coastal barrier design to withstand sea level rise and storm surge e.g. Tonga			
		Number of households and communities benefiting from CCA projects*	Benefiting means 'directly benefiting from the impact of the project. Examples: Communities and households impacted by water systems, solar systems, food production systems, sea wall.	0	X households on Tab North, Makin and Kuria islands	190516 KI9 - Project Results Mission Report - Combined
		Household				
		Communities		2	3 communities benefiting directly, those of: Tab North, Makin and Kuria islands	190516 KI9 - Project Results Mission Report - Combined
		Number of interventions successfully replicated at national, provincial and local/community level*	Replication as flagged in the PDD. "Intervention replicated" means replicating existing or past intervention before the project (can be an improved replica) at national, provincial and local/community level. E.g. CK1.	2	1	181018 KI9 - North Tarawa Trip 2 - Coastal Landuse Mapping Workshop - Synthesis Report 180923 KI9 - Kuria Trip 1 - GIS Training Exercise Report 190401 KI9 - Makin Trip 2 - GIS Training Exercise Synthesis Report

		Number of interventions which combine implementation and strengthening of systems for capacity building, planning, public finance management, mainstreaming and country-led coordination* (only projects that have this as a high level outcome)	'Combine intervention' means intervention with multi-dimensional approach that includes 3 of the 5 components listed above. E.g. TO31 - JNAPP II	0	1 – upgrade of IT systems and GIS officer skills and the Department of Lands including a new system for undertaking community participation, and a commitment to long term planning to undertake coastal vulnerability assessments	190830 KI9 - Land Management Division Infrastructure Upgrade Report 190906 KI9 - Final Skills Assessment Report 190617 KI9 - Guide to GIS Community Participatory Mapping - A Framework 190912 KI9 - Letter of Commitment to Long Term Plan
		Number of interventions which enhance gender equality.* <i>Note: sex disaggregated data</i>	Validation - Gender Products 'Enhance gender equality' means where a project demonstrates an intervention at the activity level on the equality of roles for decision making. E.g. Establishment of gender neutral decision making body; Gender assessment influencing infrastructure, policy, plan and legislative design; Trainings/ Workshops/ Consultations	1	3 Community-participatory mapping trainings and participation of select community members in the technical coastal mapping exercises with	181018 KI9 - North Tarawa Trip 2 - Coastal Landuse Mapping Workshop - Synthesis Report 180923 KI9 - Kuria Trip 1 - GIS Training Exercise Report 190401 KI9 - Makin Trip 2 - GIS

					the government GIS trainees – One training event held each on Tab North (Aiwa Islet), Kuria (Keibu Islet) and Makin islands	Training Exercise Synthesis Report
		Number of trainings and people trained in SE/CCA interventions	Number of trainings validated by training reports.	3	<p>10 trainings in total:</p> <p>7 Institutional Trainings</p> <p>Trainings of GIS officers from government during 7 separate training events</p> <p>3 Community Trainings</p> <p>GIS Training & Field Application on Landuse and Coastal Vulnerability Assessments on Makin, Kuria</p>	<p>7 Institutional Trainings</p> <p>171212 KI9 - Gender Planning Workshop Participants List</p> <p>180630 KI9 - Tab North - Trip 2 - GIS Training Exercise Participants List</p> <p>180810 KI9 - Coastal Management Workshop Participants List</p> <p>180830 KI9 - Makin Trip 1 - GIS Training Exercise Participants List</p> <p>180920 KI9 - North Tarawa Trip 1 - 3D</p>

					and Tab North islands	Mapping Exercise Participants List
			Number of people trained recorded as by product of training.		M – 103 F – 30	180923 KI9 - Kuria Trip 1 - GIS Training Exercise Participants List 181121 KI9 - Coastal Risks Categorisation Workshop Participants List 3 Community Trainings 180630 KI9 - Tab North - Trip 2 - GIS Training Exercise Participants List 180830 KI9 - Makin Trip 1 - GIS Training Exercise Participants List 180923 KI9 - Kuria Trip 1 - GIS Training Exercise Participants List
		Number of partnerships established between EU-GIZ ACSE and	‘Partnerships established’ means formal partnership established validated by MoUs, or contracts	1	3	151007 Kiribati MOU - GIZ - GOK A

		governments, development partners, regional organisations, and the like.				151007 Kiribati MOU - GIZ - GOK B 151007 Kiribati MOU - SPC_GOK for ACSE 170215 KI9 - Financing Agreement - 81208394 - English
--	--	---	--	--	--	--

5. Visibility

Table 12 lists the visibility products developed by the project. These are annexed to this report and have been submitted separately to GIZ as part of the project master file. Note that many project outputs also formed part of the visibility actions but are listed elsewhere. The project also was presented at the Quantum Leap Week 2018 and MELAD Week 2019 and was presented to government committees and island beneficiaries as part of update reporting and feedback missions.

Table 12: Project Visibility Products

Visibility Products
180101 KI9 – Brochure – Project Overview - English
180101 KI9 – Brochure – Project Overview - Kiribati
180301 KI9 - Banner - Project Promotion
180310 KI9 - Quantum Leap Week Visibility Report
181001 KI9 - Poster - Vulnerability and Coastal Change
181023 KI9 - Peer Learning Workshop Lessons Learnt Report
181023 KI9 - Peer Learning Workshop Project Presentation
181121 KI9 - Coastal Risk Categorisation Workshop Presentation
190101 KI9 - Poster - Tab North Project Results - A1 Size
190329 KI9 - Makin Trip 2 - GIS Training Exercise TOR
191014 KI9 - Handing Over Press Release and Images

6. Annexes

All documents related to the project are presented below in chronological order. These have been submitted to GIZ as part of the master file for this project.

Annexes to the project
140912 KI9 - Concept Note
141003 KI9 - Concept Note Evaluation
151007 Kiribati MOU - GIZ - GOK A
151007 Kiribati MOU - GIZ - GOK B
151007 Kiribati MOU - SPC_GOK for ACSE
161206 KI9 - Project Design Document
170215 KI9 - Financing Agreement - 81208394 - English
170215 KI9 - Financing Agreement - 81208394 - German
170215 KI9 - Special Agreement to FA - 81208394
170727 KI9 – Pacific Community Technical Services TOR
170728 KI9 – Pacific Community Technical Services Contract
170731 KI9 - Annex 7 Technical Progress Report No.1
170829 KI9 - GIS Applications and Assessment - SPC Mission TOR
170830 KI9 - GIS Applications Seminar Participants List
170830 KI9 - GIS Applications Seminar Report
170904 KI9 - Institutional Capacity Assessments & Situation Report
170911 KI9 - GIS Applications and Assessment - SPC Mission Report
171211 KI9 - Gender Workshop ToR
171212 KI9 - Gender Planning Workshop Participants List
171212 KI9 - Gender Planning Workshop Report
180101 KI9 – Brochure – Project Overview - English
180101 KI9 – Brochure – Project Overview - Kiribati
180201 KI9 - Annex 7 Technical Progress Report No.2
180301 KI9 - Banner - Project Promotion
180301 KI9 - Tab North Trip 1 - Project Planning TOR
180310 KI9 - Quantum Leap Week Visibility Report
180326 KI9 - Tab North Trip 1 - Project Planning Report
180629 KI9 - Tab North Trip 2 - GIS Training Exercise TOR
180630 KI9 - Tab North - Trip 2 - GIS Training Exercise Participants List
180630 KI9 - Tab North - Trip 2 - GIS Training Exercise Report
180701 KI9 - IT Personnel TOR
180701 KI9 - Kiribati National Conditions of Service
180702 KI9 - IT Personnel Temporary Contract Copies
180725 KI9 - Coastal Management Workshop TOR
180731 KI9 – Arthur Webb Coastal Workshop Services Contract
180810 KI9 - Coastal Management Workshop Participants List
180810 KI9 - Coastal Management Workshop Report
180820 KI9 - Annex 7 Technical Progress Report No.3
180829 KI9 - Makin Trip 1 - GIS Training Exercise TOR
180830 KI9 - Makin Trip 1 - GIS Training Exercise Participants List
180830 KI9 - Makin Trip 1 - GIS Training ICC Trip Report
180920 KI9 - North Tarawa Trip 1 - 3D Map Modelling Report
180920 KI9 - North Tarawa Trip 1 - 3D Mapping Exercise Participants List
180922 KI9 - Kuria Trip 1 - GIS Training Exercise TOR
180923 KI9 - Kuria Trip 1 - GIS Training Exercise Participants List
180923 KI9 - Kuria Trip 1 - GIS Training Exercise Report
180925 KI9 - QGIS Change Detection Manual

181001 KI9 - Poster - Vulnerability and Coastal Change
181017 KI9 - North Tarawa Trip 2 - Coastal Landuse Mapping Workshop TOR
181018 KI9 - North Tarawa Trip 2 - Coastal Landuse Mapping Workshop - Synthesis Report
181023 KI9 - Peer Learning Workshop Lessons Learnt Report
181023 KI9 - Peer Learning Workshop Project Presentation
181120 KI9 - Coastal Risk Categorisation Workshop TOR
181121 KI9 - Coastal Risk Categorisation Workshop Presentation
181121 KI9 - Coastal Risks Categorisation Workshop Participants List
181121 KI9 - Coastal Risks Categorisation Workshop Report
190101 KI9 - Poster - Tab North Project Results - A1 Size
190222 KI9 - Annex 7 Technical Progress Report No.4
190329 KI9 - Makin Trip 2 - GIS Training Exercise TOR
190401 KI9 - Makin Trip 2 - GIS Training Exercise Synthesis Report
190411 KI9 - Community Feedback Results Field Missions TOR
190419 KI9 - Tab North Trip 3 - Community Feedback Results Presentation
190426 KI9 - Makin Trip 3 - Community Feedback Results Presentation
190516 KI9 - Final Project Evaluation ToR
190516 KI9 - Project Results Mission Report - Combined
190517 KI9 - Financing Agreement Amendment Proposal
190517 KI9 - Project Manager Contract
190517 KI9 - Project Manager_Amended TOR
190517 KI9 - Request for Variation to FA - 81208394
190617 KI9 - Guide to GIS Community Participatory Mapping - A Framework
190830 KI9 - Land Management Division Infrastructure Upgrade Report
190901 KI9 - Annex 7 Technical Report No.5
190906 KI9 - Final Skills Assessment Report
190912 KI9 - Letter of Commitment to Long Term Plan
191014 KI9 - Handing Over Press Release and Images
191014 KI9 - Assets Register
191014 KI9 - Project Handover Report
191028 KI9 - Kiribati National Environment Group - Overview
191115 KI9 - Annex 7 Technical Report No.6
191116 KI9 – Financing Agreement Amendment
191120 KI9 – Final Evaluation Report
191125 KI9 – Final Project Report