



DPM Meets with Heads of Ministries



From left to right: Puna Rakanui (Clerk for House of Ariki), John Tangi (Clerk for Parliament), Sonny Williams (Secretary of Culture), Maara Tetava (Commissioner of Police), DPM Teariki Heather, Kaumaiti Nui - Travel Tou Ariki, Mac Mokoroa (Secretary of ICI), Tingika Elikana (Secretary of Justice)



All HOM's were also accompanied by selective staff at this meeting

On Thursday 20th March 2014, Minister Heather held a Portfolio Budget Meeting with all the HOM's under his portfolio at his office in Nikao. The main purpose of this meeting was to enable each HOM to provide a brief outline of their budget initiatives for the 14/15 financial year. Mac Mokoroa, Secretary of ICI, presented a summary of what ICI is bidding for in the new budget round for both core budget and capital projects. The highlight of the meeting was the comparison between requested figures. Those representing Justice, Parliament, House of Ariki and Police, were requesting for figures in the thousands. Mokoroa, on the other hand, presented bids that were worth millions.

In an effort to support the budget bids of those Ministries under his portfolio, Minister Heather will continue to host meetings of this sort on an annual basis. By doing so he is able to support the HOM's proposals at budget interviews, during cabinet deliberation, and most importantly, in Parliament.

Water Meter Installation

Within a span of two months, two teams from the water works department at ICI successfully installed 64 water meters throughout Rarotonga. 12 were bulk water meters installed at each intake, while the remaining 52 were installed at domestic, commercial, agricultural and industrial properties.

The installation of these water meters is a step towards improving our water system here on Rarotonga. Their main purpose is to measure water usage, which will enable the department to predict periods of high or low water pressure, and draughts. With this information, they can then implement strategies such as enlarging water catchment areas, installing more concrete tanks for water storage, and so forth.

These water meters are fitted with radio loggers, which enables data from the meters to be collected using a hand held PDA. This device is connected to the meters by Bluetooth, and can receive data so long as it is within a 25m circumference. Once data is collected, the team return to their main office. It is here where data is extracted from the PDA using Microsoft Active Sync, then placed into Microsoft Excel for analysis. Once complete, the file is archived to the Ministry's server where it can be accessed by employers who may need the information for future planning of infrastructure projects.

● Raututi Taringa



"WOT SUP WATSAN!"

In view of the near completion of the three year Waste Management and Sanitation Improvement (WMI) programme funded by New Zealand and Australia, WATSAN is now gearing up for the launch of a larger-scale Sanitation Upgrade Programme (SUP) for the Cook Islands.

As planned, the WMI programme has overseen the installation and upgrade of household sanitation systems in over 200 homes in the Muri/Avana pilot area with the aim of reducing biological pollutants going to the lagoon. The benefits to the health of the lagoon and enjoyment of the area by residents and visitors have already been experienced and are expected to increase in the coming years.

The success of the programme has been possible through collaboration with the Muri/Avana local community and in particular, the Muri Environment Care (MEC) group.

The WMI programme provided upgraded sanitation systems with a typical cost of \$12,500 to householders in return for a household contribution of \$1,000 towards the cost. Acknowledging some extenuating circumstances, the WMI programme accommodated periodic payments from householders. However, while some households have fully paid their \$1,000 contribution to the cost of their upgrade, there are some outstanding contributions owed by members of the community.



Drain layer professionals installing the land application bed for a wastewater system in the Lagoon Protection Zone of Muri.

WATSAN is urging all those with outstanding contributions to come in to discuss payment of outstanding amounts.

With the completion of the household sanitation system upgrades, the following remain to be completed for the WMI Programme:

1. Commercial sites' sanitation systems – WATSAN has visited every commercial site in the pilot area to assess their sanitation systems for compliance with the Public

Health (Sewage) Regulations and Code, and has provided operators with information on what is required to achieve compliance. WATSAN will be having follow-up visits over the next couple of months to start working with operators to ensure that all commercial sanitation systems are compliant with the law as soon as possible.

2. Animal farms/animal owners - WATSAN will be visiting all animal farms and sites where animals are kept in the pilot area over the next few months to make sure that all waste from animals and the animals themselves are managed in accordance with the law, so that pollution of streams and the lagoon is prevented.

3. WATSAN is now exploring beyond Muri/Avana in terms of commercial systems' compliance and animal management and is looking to commence visits and assessments of those over the next few months. To complement this work, WATSAN is working with the Ministry of Health (MoH) and the Tourism Accreditation scheme to introduce a 'Warrant of Fitness' scheme for commercial properties. This scheme will ensure that all tourism sites that gain Tourism Accreditation have sanitation systems that are in compliance with the current standards and regulatory requirements.

4. WATSAN expects to complete the WMI programme in June of this year, with the SUP to be the next pro-

gramme of work for the sanitation sector. SUP will take up to four years to complete, will cost \$18M and is being co-funded by the Cook Islands Government, the European Union and New Zealand. SUP will expand on the approach developed through WMI, with the aim of significantly reducing pollution loads being discharged into our lagoons so that we protect and improve the environment and public health.

As a first step in delivery of the SUP, WATSAN is now in the final stages of funding and planning for a roll out of upgrades to onsite, household sanitation systems at up to 1,000 homes in selected areas on Rarotonga and Aitutaki. WATSAN hopes to start physical works in May/June of this year, following consultation with communities and individual property owners. SUP will involve work opportunities for local plumbers and drain layers in the coming months.

WATSAN will also for the first time be looking at sanitation needs in the Pa Enua from the northern to the southern group islands.

As in the WMI programme, a financial contribution will be required from householders but with full payment required prior to the commencement of physical work. This is to avoid increasing the number of homeowners who do not make regular payments for their systems upgrade.

"The vast majority of the upgrades will be to bring systems into compliance with the Regulations and so, while we are hoping people will take up the incentive of a heavily subsidised system (paying only a fraction of the total average cost of installation of around \$11,000 - 12,000) ultimately individual households will have to upgrade their systems, probably within a period of 1-2 years. We hope that people will take advantage of the SUP Programme and the subsidy available now, rather than choosing to miss out on that and having to pay the full cost of the upgrade later." says Acting Director of WATSAN Tekao Herrmann.

● Tekao Herrmann

Pukapuka Airport Upgrade

On the 13th of February 2014, ICI deployed a four man construction team equipped with machineries, and construction materials to Pukapuka. The team arrived safely on the 18th of February 2014. The offloading of cargo from the barge was delayed by nine days for two reasons; bad weather, and the fact that Pukapuka does not have a proper harbour or lagoon passage that is large enough to accommodate the barge. As a result, cargo was offloaded onto the reef, and transported to land. As of Friday 21st March, the team only managed to complete 550m of the airport runway due to setbacks caused as a result of the breakdown of machinery and equipment. With 950m worth of area remaining to be

upgraded, the team has requested that the date of completion be extended by one month. The project is now expected to be fully complete in the first week of May. Onsite works include the clearing and carting away of large rocks and overgrown shrubs, removal of runway surface (base), surveying for runway spot heights, compacting, compact testing, and rolling.

Additional supplies such as fuel, machinery parts, and food has been shipped to Pukapuka to cover the shortfall. The team from ICI is working closely with the Island Mayor, Council and Executive Officer of Pukapuka, as well as the Island Administration.

● Joseph Akaruru



Transporting fuel from Wale to Motu Ko (airport)



Landing of machinery on the reef



Western side of runway before clearance



Collecting of large rocks and removal of grass roots

ICI's Emergency Response to Cyclone Mike

In light of a delayed response to naming Tropical Depression 19, Standby Internal Test Communications commenced at 1142hrs in the morning of Tuesday 18th March 2014. This proved very useful for the potential call-up standby procedures as required of ICI, under the NDRMC Act 2006.

A briefing of TD19 was conducted by ICI EOC Disaster Response Coordinator, Keu Mataora and assistant Joseph Akaruru. In attendance were the core response team from the Roadwork's department, and Central Administration. A presentation on the procedures was conducted to familiarize everyone with their core response activities and a lead up to establishing a Standby Crew for the response efforts of ICI. This presentation is available should anyone wish to be well versed with response procedures.

At 1345hrs, an email advisory was circulated by the Director of Corporate Services sanctioned by the Secretary for all staff to go home for preparedness as a result of an official advice from the Office of the Public Service Commission. This email advisory gave a mandate for a Standby Crew to be established in the absence of an official NEOC advisory.



Response Summary:

- Physical noting of the weather and in-sync communications with Met Office confirmed that a Standby Crew was needed.
- There was no request for the evacuation centers.
- Telephone communication with the Outer Islands was confirmed. Staff in Pukapuka and Mangaia responded to the advisory.
- Food rations for Standby Crew was requested to the Director of Corporate Services, and delivered at 1900hrs.
- All Standby Crew were equipped with safety gear.

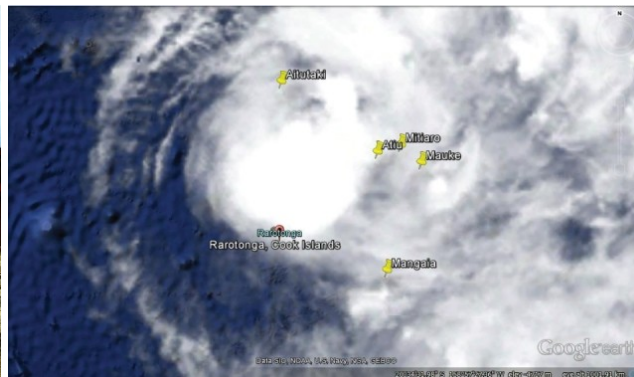


Figure 1 and 2: Workers from ICI's Road Works Department clearing debris at the Avarua Harbour on the morning of Wednesday 19th March 2014. **Figure 3:** TC Mike Overlay on Google 2126hrs 180314 – Image generated by POAA Mangaia Paul Maoate.

● Keu Mataroa

Mangaia Harbour Project

Construction works to the Mangaia came to completion on March 24th 2014. The old ramp was backfilled, and a concrete slab placed on top. Landholdings Limited carried out clean up and landscaping works around the harbour area. In the early morning of Wednesday 26th March 2014, the barge arrived to Mangaia to pick up Landholding's machineries, equipment, and construction materials. The project is now within a retention period.

● Joseph Akaruru

Images: Construction of the last component of the harbour, which is the backfilling and concreting of the existing slipway. Rough seas as a result of cyclone Mike caused some delays and minor damage to the harbour.



Manihiki: Tauhunu and Tukao Harbour Projects

A contract to upgrade the harbours at Tauhunu and Tukao was awarded to Landholdings Limited. The contractor is scheduled to mobilize to Manihiki in the second week of April 2014, with the first shipment of machineries, equipment, and construction materials likely to depart by barge on the 26th of April. Upon arrival to Manihiki, Landholdings is expected to establish storage spaces, a concreting plant area, a site office and an accommodation area prior to the commencing of any construction work. A construction start date will not be confirmed until all preliminary preparation works are complete.

● Joseph Akaruru

Project City 3

The tender for this project is currently suspended until further notice for re-advertising, with potential tenders being advised.

Vaimaru Water Gallery

Although construction was completed in December of 2013, there is still a need to install fencing around the gallery parameters. Additional funding is being sourced to cover this variation cost, including the variation cost of upgrading the gallery which was not covered in the original project budget.

Bridges and Drainages Project

Tender evaluation is complete. ICI is currently waiting for the Tender Evaluation Team Report of submission to the Tender Committee for approval to award the contract.


New Staff

ICI is pleased to introduce and welcome Mrs Peerui Tepuretu to its Corporate Services team, as our Senior Finance Officer.

ICI Support Center Portal

In an effort to provide effective service, the IT team at IC have established the 'ICI Support Center Portal.' This online service enables the public to report any issues related to ICI by accessing helpdesk.ici.gov.ck and creating a new ticket. Each request is assigned a unique ticket number which customers can use to track the progress of and responses online. For the customers reference, all responses are archived should they wish to view this at a later date. An alternative to opening a ticket from this portal is to send a detailed email to helpdesk@ici.gov.ck, or to contact our friendly Client Services Personnel on +68220321. Customers should be advised that a valid email address is required when submitting a ticket.

● Sally Hosking

**ICI Helpdesk**
SUPPORT CENTER
Customer Support System

Guest User | [Log In](#)


[Support Center Home](#) [Knowledgebase](#) [Open New Ticket](#) [Check Ticket Status](#)


Kia Orana and Welcome to the ICI Support Center Portal
In order to streamline support requests and better serve you, we utilize a support ticket system. Every support request is assigned a unique ticket number which you can use to track the progress and responses online. For your reference we provide complete archives and history of all your support requests.

An alternative to opening a Ticket from this portal is to send a detailed email to helpdesk@ici.gov.ck, otherwise, contact our *Friendly and Helpful* Client Services personnel on +68220321.

Please note that a valid Email Address is required to submit a Ticket from here.

Kindest Regards,
ICI Helpdesk Administrator

**Open A New Ticket**
Please provide as much detail as possible so we can best assist you. To update a previously submitted ticket, please login.
[Open a New Ticket](#)

**Check Ticket Status**
We provide archives and history of all your current and past support requests complete with responses.
[Check Ticket Status](#)

Be sure to browse our [Frequently Asked Questions \(FAQs\)](#), before opening a ticket.

Customers can access the ICI helpdesk via helpdesk.ici.gov.ck

Water Delivery Truck: "Over 20years old, and still running strong!"

For the past few months, the Road Works Department at ICI have been working tirelessly to deliver water to homes throughout Rarotonga. The main truck used to cart water is that driven by Willie Wichman, which is over 20years old and is experiencing severe mechanical issues.

"There's lots of things wrong with it," reports Wichman. "The air compressor, the injector nozzles, the brakes – only one wheel on the truck is braking, and I use a block of wood as my brake. I'd say the truck is 10% safe but I've been lucky for many years." Wichman confirmed that of the vehicles ICI owns, this is the only truck that can easily maneuver uphill. ICI's mechanics have given the vehicle much attention over the years in order to keep it running.

In spite of the circumstances, the vehicle – which is fitted with a 5000L tank – continues to be used for water cartage. "It's struggling, but it's still running," said Wichman. In fact, during periods of severe water shortages, he and his team continued to work 20hours shifts, per day, for six days a week.

But now, after the much needed rainfall received over the weekend, Wichman and his team have time to recover and apply maintenance to their vehicles.

● Sally Hosking



ICI's Geospatial Division has been operating for the last 10-15 years. It is responsible for the Cook Island's Hydrography and Nautical Charts, Maritime Boundaries, and the Extended Continental Shelf. To ensure that the Cook Islands fulfils its international obligations under UNCLOS (United Nations Convention Law of the Sea), ICI will continue to provide technical services to relevant stakeholders based locally, regionally, and internationally.

Maritime Boundaries

ICI has been involved with Maritime Boundaries since 2005. ICI has been actively collaborating with our regional partners SPC-SOPAC and Geo Science Australia in delimitating our maritime boundaries with our country neighbours such as Tokelau, Niue and Kiribati. The maritime boundaries were previously with FFA and later transferred to SPC-SOPAC to complete the delimitation process of all the Pacific Island countries in the region.

During the 43rd Pacific Forum Leaders meeting held on Rarotonga in 2012, the remaining of the Cook Islands maritime boundaries were signed by the Cook Islands Prime Minister Hon. Henry Puna. This was done in the presence of the Deputy Prime Minister Hon. Tom Masters and Technical Adviser to the Cook Islands Maritime Project, Vaipo Mataora. The signing of these treaties made the Cook Islands the first Pacific Country to conclude our maritime boundaries with our neighbours – an achievement worthy of acknowledgement.

Recently, Mataora was on a two week attachment at SPC-SOPAC to complete the remaining zones of the Cook Islands – the Territorial Sea (12NM) and the Contiguous Zone (24NM). With regard to illegal fishing, non fishing areas, and mining, these zones are vital to Custom Acts, the MMR (Ministry of Marine Resources), Seabed Mining, and the Marine Park. ICI will collaborate with Crown Law and the Australian Attorney General Office to create a template in which all the coordinates of the two zones can be inserted. Once complete, the Cook Islands will be able to lodge these coordinates with DOALOS (Division of Ocean Affairs, Law of the Sea), at the next proposed ECS meeting in New York, in August this year.

Hydrography and Nautical Charts

As the principal focal point for IMO (International Maritime Organisation) and IHO (International Hydrography Organisation), ICI is responsible for Hydrography and Nautical Charts. Under the SOLAS Convention (Safety of Life at Sea), the Cook Islands is obligated to establish a National Hydrography Governance Structure, appoint a Maritime Safety Officer, establish a steering committee to coordinate hydrography surveying in the Cook Islands. These responsibilities were directed by the Cook Islands Cabinet in 2012. To date, however, Cabinet directive has been denied by the Public Service Commissioner. For whatever reasons that PSC declined the formation of the Geospatial Division remains unknown.

In 2011, the Cook Islands made an application to become a member of the SWPHC (South West Pacific Hydrography Commission). When the application was approved in 2012, the Cook Islands, under ICI, had the obligation of reporting to the commission on the progress of hydrography in the Cook Islands. The Cook Islands, in collaboration with the Cook Islands Charting Authority LINZ (Land Information New Zealand), will ensure that hydrography surveying will become a priority for ICI, in providing the shipping, cruise and fishing industries the relevant Nautical Charts information to enable them to have the confidence in navigating in our national 200EEZ in compliance with the SOLAS convention.

In August last year ICI, LINZ and MARICO Marine Ltd carried out a Hydrography Risk Assessment of the whole of the Cook Islands. The delegation visited the Outer Islands in both the northern and the southern group and met with members of the community, the Island Mayors, and the Island Councillors, to discuss how they can prioritise areas that are of high risk to navigation, and areas that need to be surveyed to ensure the safety of navigation in our national waters. This survey will be able to assist with tourism, coastal management, new harbour developments, seabed mining, climate change, inundation modelling, etc.

The Second phase of this work will be carried out sometime this year, once the logistics and funding is endorsed by IMO, IHO, NZAID and the Government of the Cook Islands.

Cook Islands Extended Continental Shelf

In 2009, the Cook Islands became the first country in the Pacific region to lodge its submission to the full commission at the United Nations Convention on the Law of the Sea. Since then, ICI has been involved with the Cook Islands Extended Continental Shelf claim, and the commission of the Limits of the Continental Shelf at DOALOS. ICI's primary role is to provide the technical support required for our submission, and to work closely with our international partners to ensure that the submission is successful. Because the Northern Group Islands (Pukapuka, Nassau, Rakahanga and Manihiki) lie on the Manihiki Plateau, the Cook Islands, under the Law of the Sea Convention Article 76, is qualified to claim to an Extended Continental Shelf.

The Cook Islands delegation in collaboration with our international partners, continue in dialogue with the Cook Islands sub commission at DOALOS to ensuring that the Cook Islands is successfully with its quest of a ECS. The next session for the Cook Islands delegation to meet with sub commission at DOALOS is proposed for August 2014.

The Geospatial division under ICI holds many sophisticated seismic and e-topo (seabed) data for the Cook Islands, and it will continue to assist both Government and Private sectors with maritime mapping applications.

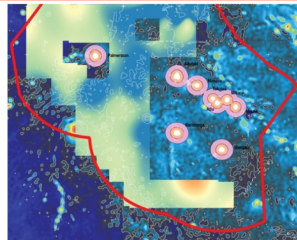


Fig 1: Signing ceremony held during the 43rd Pacific Forum Leaders meeting.

Fig 2: Cook Islands two remaining zones - Territorial Seas (12NM) and Contiguous Zone (24NM).

Fig 3: Conducting hydrography survey, PNG.

New Mechanic for Waste Facility

This post has been introduced in our new proposed structure owing to:

- Too many breakdowns with our machineries, (especially the forklift and bobcat) causing a delay in daily operations.
- The delay in fixing these mechanical issues.
- At times the workshop mechanics have their hands full with other responsibilities within the Ministry and in the Outer Islands.

The post was filled by experienced mechanic Takave Manea following the Secretary's approval. Manea commenced his duties in March, taking on the responsibility of servicing the facility's machineries, securing parts when required, and training staff in machinery safety and maintenance.

● Tinirau Tamarua



Takave Manea and Waste Facility Staff working on forklift

Rarotonga Rubbish Collection Survey

Due to lack of information concerning the operations carried out by Contractor T&M on the daily movements of rubbish collection on Rarotonga, the Director of WAT-SAN, Tekao Herrman proposed that we carry out a daily survey to collect information on the following:

- Daily rubbish collection route
- Distance travelled on a daily basis
- Number of trips unloaded at the Waste Facility on a daily basis
- Whether rubbish collected is properly sorted.

T&M Contractors has agreed that a staff member from the Waste Facility be attached to their rubbish collection team every day, for one week. All information collected was transferred into a software called 'Map Infor', where the distance of daily movements were calculated and plotted. The survey was carried out from Tuesday 25th March to Monday 31st March. Results of the survey and findings will be published in the next newsletter edition.

● Tinirau Tamarua



INFRASTRUCTURE COOK ISLANDS

Te Tango Angaanga o te Kuki Airani

Paving the way for infrastructure in the Cook Islands!

If you have any update for the next edition-email them to sally.hosking@ici.gov.ck or call us on 20321

Kia Manuia-Secretary and staff of ICI