

SPREP as RIE for the AF and GCF

Espen Ronneberg
Climate Change Adviser

Simon Wilson
Monitoring and Evaluation
Adviser

SPREP



Overview

1. Process of accreditation
2. Status of accreditation
3. Types of projects
4. Role of SPREP
5. Moving Forward

Process of accreditation

- SPREP was accredited first to the Adaptation Fund as a Regional Implementing Entity in Nov 2013, after process started in Apr 2011
- As a result and based on Green Climate Fund analysis SPREP was fast-tracked in the GCF accreditation process, accredited Mar 2015

Status of accreditation - AF

- SPREP can submit projects of up to US\$ 10 million for national adaptation projects
- These should be in minimal risk areas, with detailed risk management measures outlined where needed
- SPREP can only act as implementing entity – execution of project activities must be done by national governments or designated agencies or consultants

Status of accreditation - GCF

- Direct, Fast Track Access
- Projects up to \$ 50 million in grants
- Limited to low to negligible economic, social and environmental risk (but this can be revised)
- SPREP eligible for readiness funds (support for institutional issues, pipeline development)

Types of projects

Table 1: Potential investment priorities and expected results of the Fund

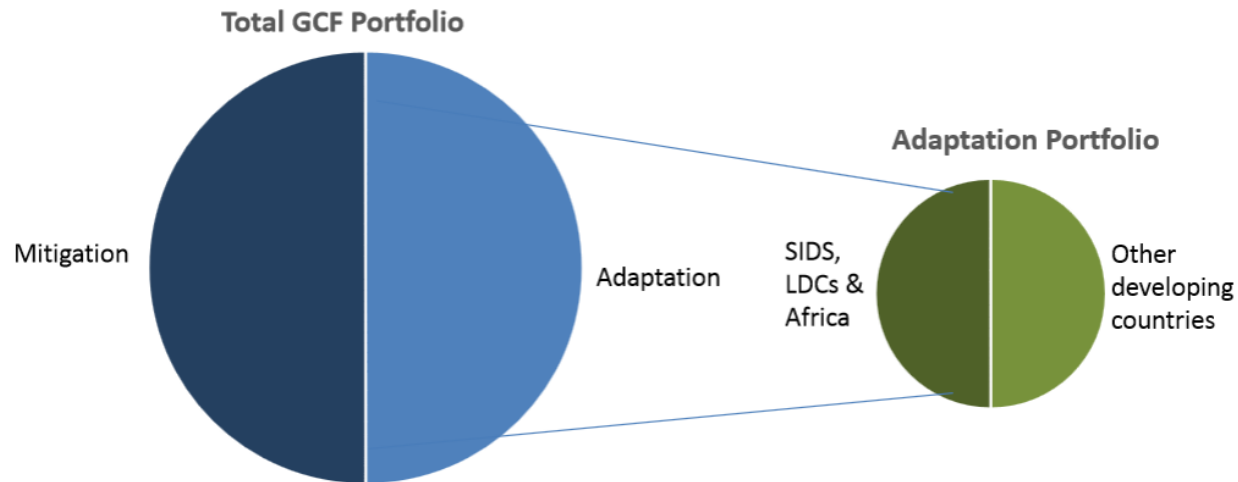
Potential investment priority	Expected results area	Geographical region targeted
1: Climate-compatible cities	Transport (M) Buildings, cities, industries and appliances (M) Livelihoods of people and communities (A) Infrastructure and built environment (A)	Africa, Asia, Latin America, Eastern Europe
2: Sustainable climate-smart agriculture	Forestry and land use (M) Livelihoods of people and communities (A) Food and water security and health (A) Ecosystems and ecosystem services (A)	Africa, Asia, with an emphasis on LDCs
3: Scaling up finance for forests and climate change	Forestry and land use (M) Food, water and health (A) Ecosystems and ecosystem services (A)	Africa, Asia, Latin America
4: Enhancing resilience in SIDS	Livelihoods of people and communities (A) Food, water and health (A) Infrastructure and built environment (A) Ecosystems and ecosystem services (A)	SIDS
5: Transforming energy generation and access	Energy generation and access (M)	Africa, Asia, with a special focus on energy access in LDCs

Abbreviations: A= adaptation. M = mitigation. LDCs = least developed countries. SIDS = small island

Types of projects



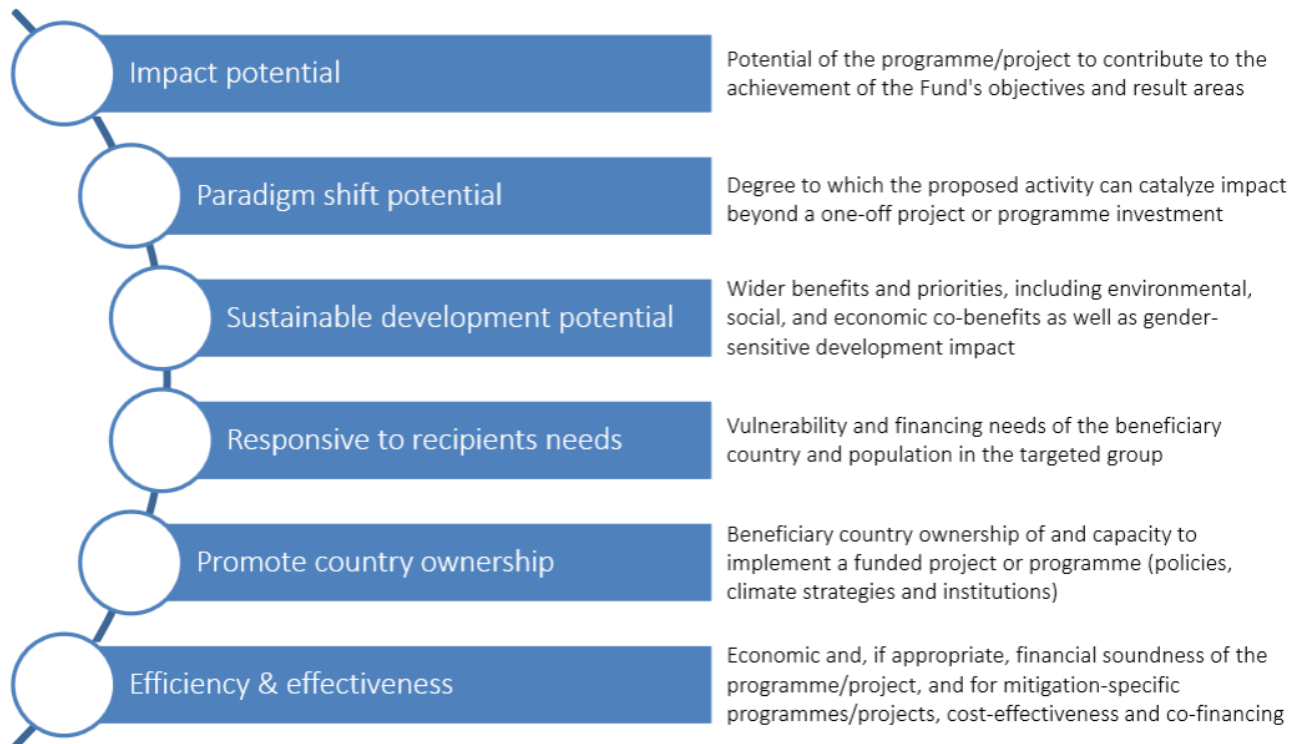
Allocation framework



Criteria of GCF investments



The Fund's Six High-level Investment Criteria*

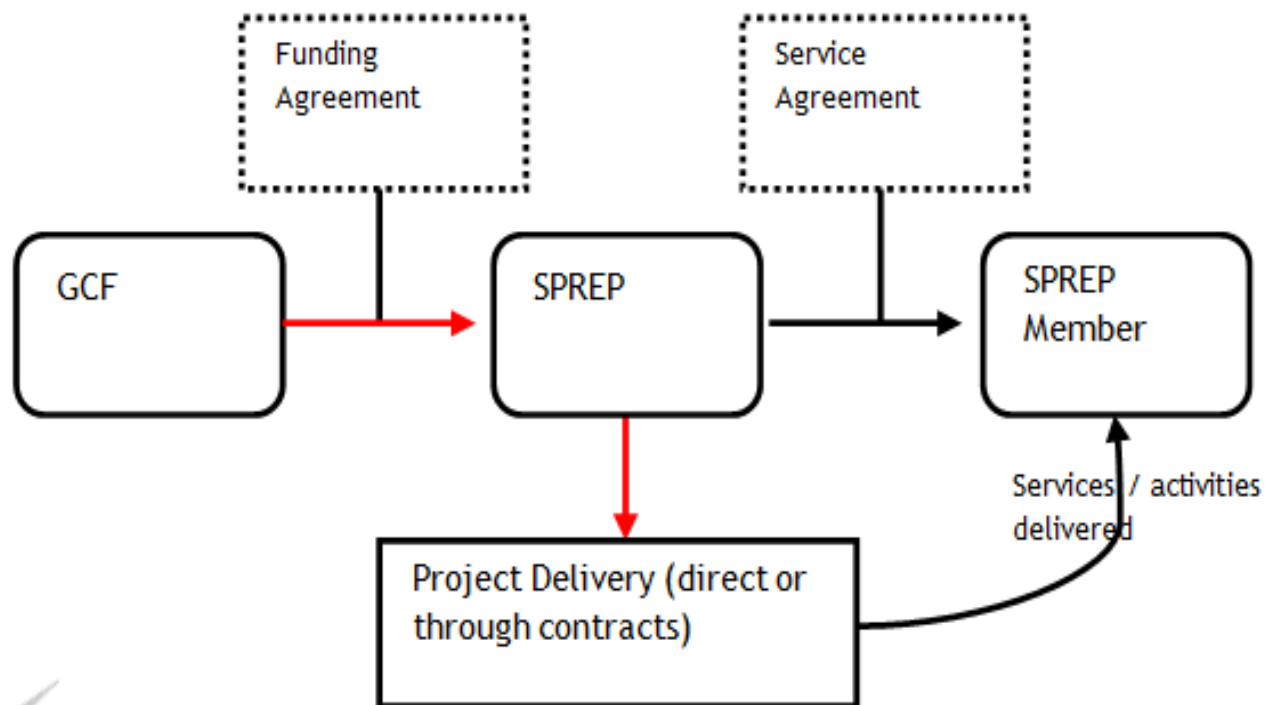


Role of SPREP

- AF & GCF - Development of a strategic pipeline of national, sub-regional and/or regional projects, in consultation with Members.
- AF – SPREP serves a ‘implementing’ (not executing) entity.
- GCF – SPREP can be either project implementing and/or executing .
- GCF – Readiness support.
- RTSM available to support technical project development, management and implementation

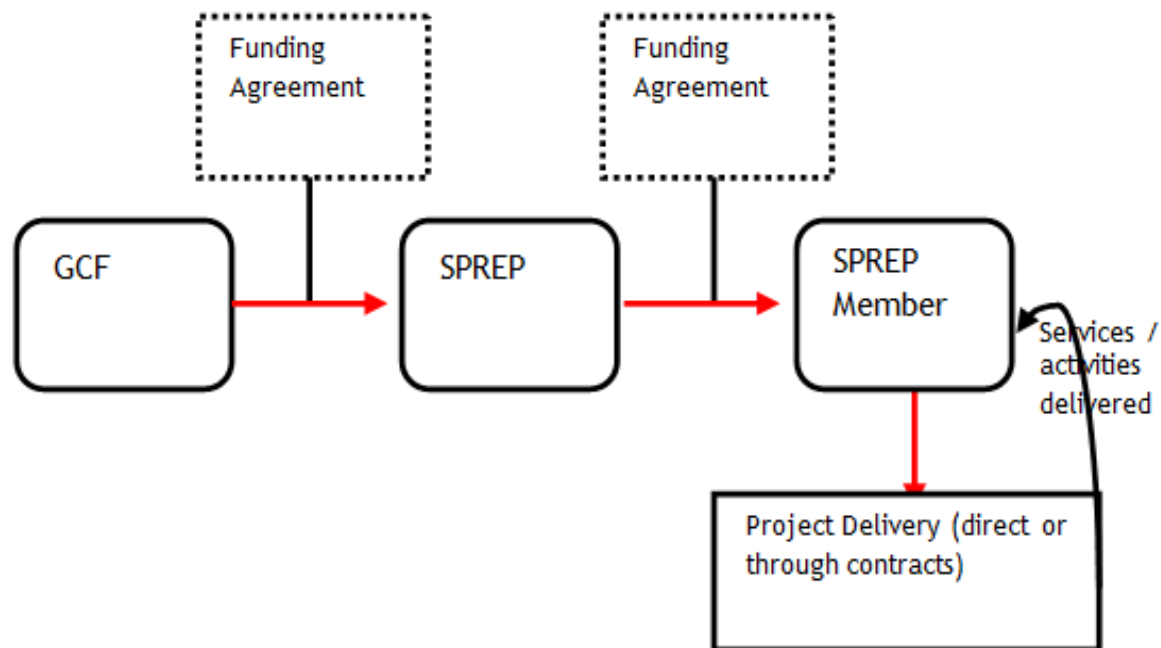
GCF modality 1

Figure 1:



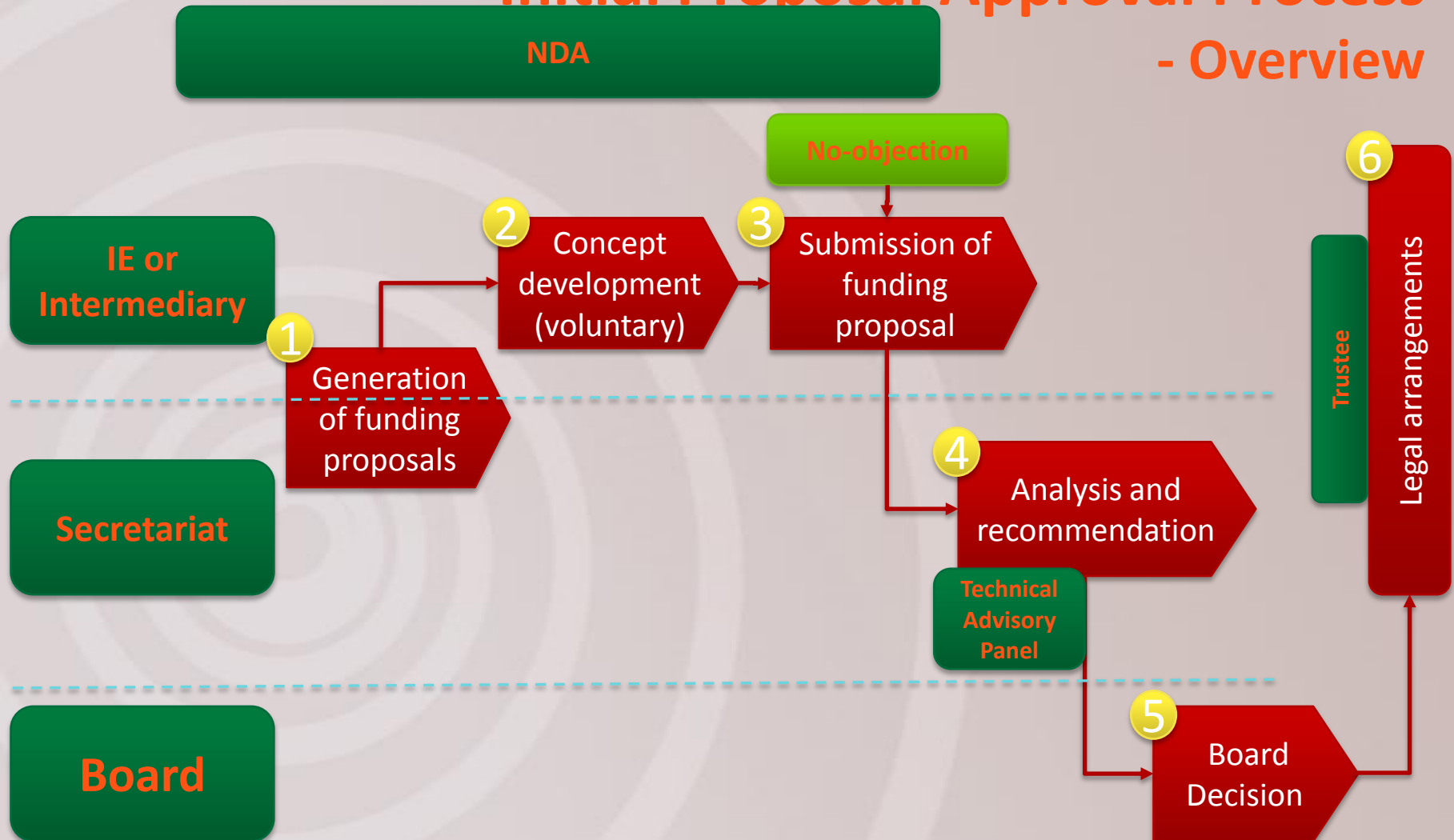
GCF Modality 2

Figure 2:



Note: red arrows depict the flow of funds

Initial Proposal Approval Process - Overview



Based on Board

Moving Forward

- SPREP aims to co-ordinate a strategic approach in collaboration with CROP and PICTs.
- Project Pipeline development – countries need to prepare – assistance is available
- Sub-regional GCF meeting in FSM mid-July 2015, and for rest of region late July 2015
- Proposals by August

Thank you
Any questions?

espenr@sprep.org

simonw@sprep.org