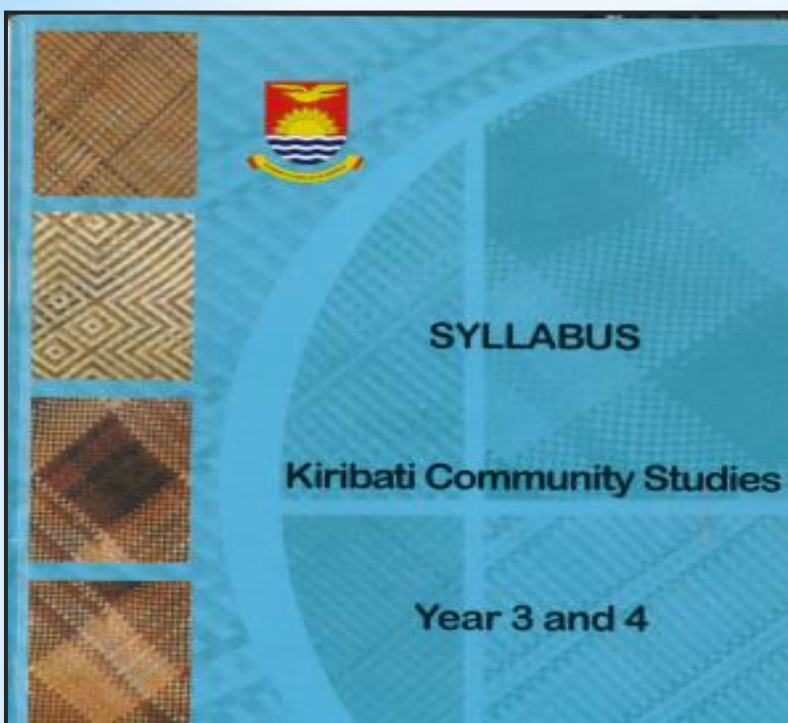




## *Working with the Education Sector to Enhance Students Understanding and Engagement in Local Adaptation and Mitigation Measures*

Presented on behalf of  
SPC/ GIZ Coping with Climate Change in the Pacific Islands Regional Programme

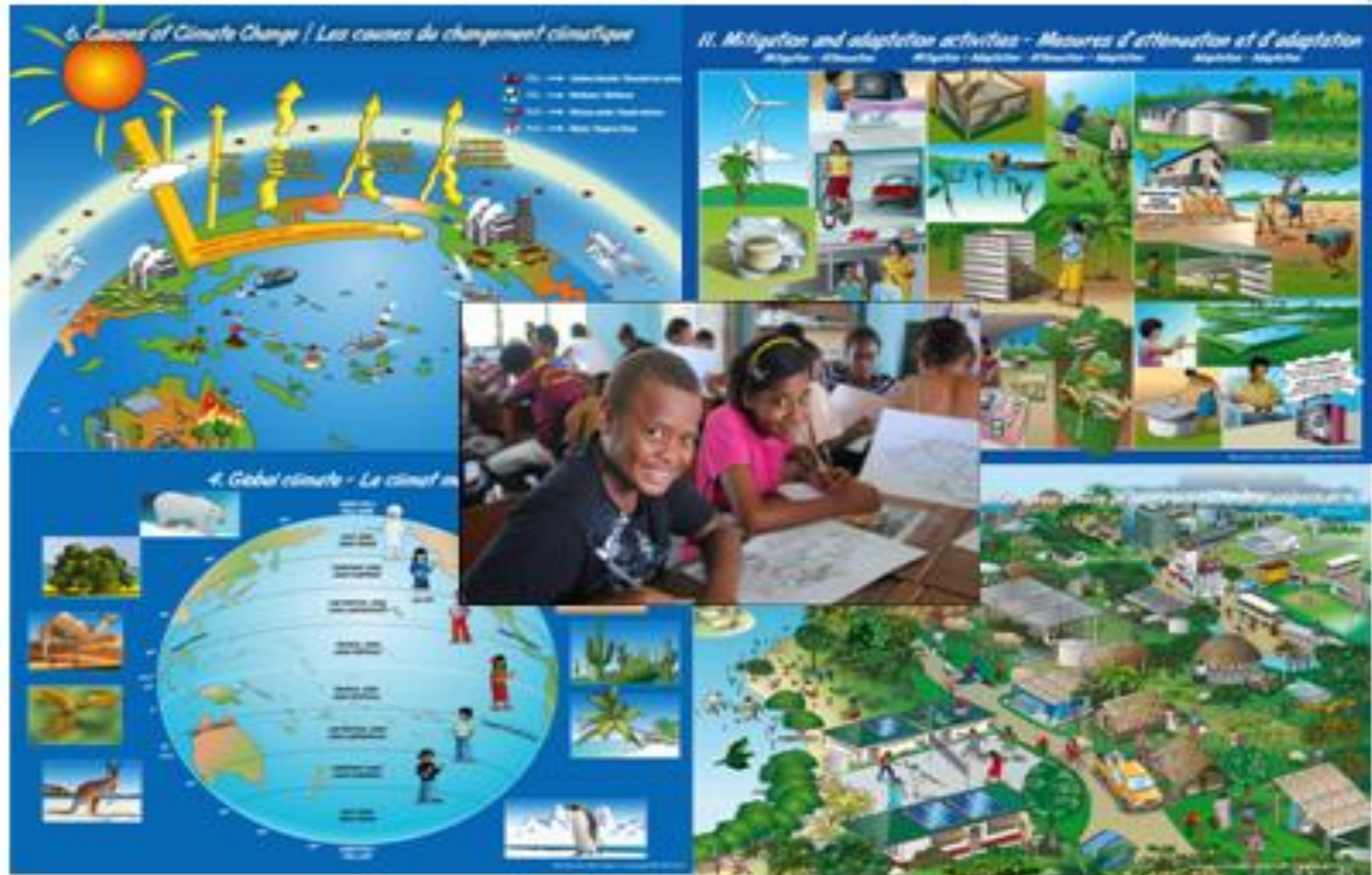






# \* What worked well?

## *Learning about climate change the Pacific way A visual guide*



# \* Challenges

- \* Curriculum review processes are lengthy- programme support is too short.
- \* MoE's are overburdened with the integration of other important thematic priorities.
- \* CCE is resource intensive.
- \* Very few CCE programmes.

# \* Recommendations

- \* National education stakeholders can and should lead education initiatives to ensure ownership and sustainability.
- \* CCE has to have a more prominent role in CC adaptation discussions.
- \* Exchange of views on relevant adaptation and mitigation messages and learning outcomes at national and regional level.
- \* Building students capacity to actively adapt to and mitigate CC.





# Vinaka Vakalevu

For further information:

Daniel Gerecke  
SPC/GIZ CCCPIR

Email: [daniel.gerecke@giz.de](mailto:daniel.gerecke@giz.de)