

Pacific impacts Analysis (iA) Methodology:

Learning from the past, making sense of impact to inform the future



Highlights

July-September 2022

This past quarter, with the practiced confidence from the field trial of the tailored impact analysis methodology for adaptation in the Pacific, has been all about connecting with others and sharing ideas through communication.

Tonga Climate Change Awareness Week, September 2022:



GCCA+ SUPA SPREP Output 1 supports MEIDECC during National awareness week.

Communications and Visibility

A pull-up banner was prepared for the national week of climate actions in Tonga, projecting a summary of its trial experience of the iA methodology, on coastal protection measures along the coastline of Tongatapu.

Output 1 recent publications:

Impact Snapshots of the four trials; Cook Islands, Federated States of Micronesia, Palau & Tonga

Tonga: <https://library.sprep.org/content/snapshot-2021-coastal-protection-measures-tonga-assessing-impact-intervention-level>

Palau: <https://library.sprep.org/content/snapshot-2021-agriculture-water-security-measures-palau-assessing-impact-intervention>

FSM: <https://library.sprep.org/content/snapshot-2021-water-security-measures-federated-states-micronesia-assessing-impact>

Cook Islands: <https://library.sprep.org/content/snapshot-2021-raui-marine-conservation-water-security-measures-cook-islands-assessing>

SPREP Virtual Library

HOME ABOUT US SEARCH COLLECTIONS SPREP PUBLICATIONS

ISBN: 978-982-04-1153-1
978-982-04-1154-8

WorldCat
Google Scholar

Location: SPREP LIBRARY

Publisher: Secretariat of the Pacific Regional Environment Programme (SPREP)

Publication Year: 2022

Publication Place: Apia, Samoa

Physical Description: 16 p. 29 cm.

Call Number: [EL]

Relevant Countries: Tonga

Available online

Subject Heading(s): Coastal protection - Tonga
Coastal zone management - Tonga

Abstract: Determining the impacts of climate change adaptation measures requires a comprehensive approach. The sounder the information about the impacts of adaptation measures, the better it is for planning future adaptation activities that focus on efforts which have the desired measurable impact.

GCCA+
SPREP
IMPACT 2021
Coastal Protection Measures
TONGA

Impact Reflection Series:

Tonga impact stories

21 Sep 2022

Read more at <https://www.sprep.org/news/the-power-of-geospatial-information-systems-as-a-tool-to-analyse-data-on-impact-of-adaptation>

14 Oct 2022

Read more at <https://www.sprep.org/news/empowering-tongan-communities-in-their-commitment-to-local-development>

Palau impact stories

Published on the Te Belau Newspaper:

July 21 2022 - Palau shares experience of impacts Analysis Methodology with others in the Pacific

Aug 18 2022 - Palau demonstrates a coordinated one action with its scaling up adaptation efforts

Video reflection stories

Trial of the Scale up Pacific Adaptation impact methodology. <https://gccasupa.org/learning-from-the-past-to-impact-the-future-series/>

Strong advocacy on importance of Ra'ui by traditional leaders, Cook Islands. <https://youtu.be/Lgg5xl0a8eA>

Institutionalisation of the impacts Analysis methodology and use of impact indicators, Palau. <https://youtu.be/cHcFeFi0hmk>

Practice Learning Series

The Practice Learning Series hosted by SPREP via Zoom continues. Segment four featured Palau's impact analysis: sharing the perspectives of its Bureau of Public Health and the mapping of impacts of actions for water security and agriculture measures in Palau.

Segment Five was on the Pacific Meteorology Desk sharing information on the "El Nino - Southern Oscillation (ENSO) and it's impacts in the Pacific; Shirley from the Division of Media and Information Services, Ministry of State and the GCCA+SUPA infrastructural support to its radio station to facilitate awareness of stories of impact and resilience in Palau; data stories on exemplars of resilience.

Attendance to the segments held per month have increased three-fold since the first session with 53 participants in Segment 4.

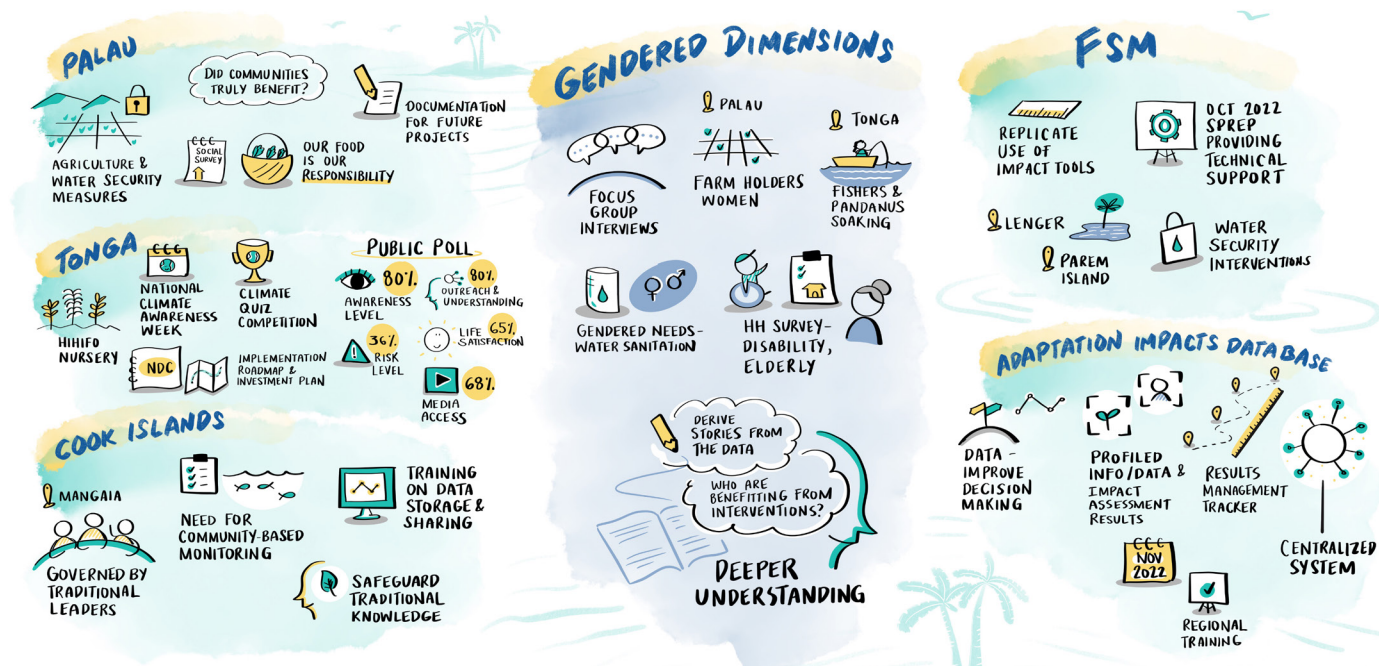
To know more, can access segment summaries online at <https://www.pacificclimatechange.net/project/gcca-plus-supu>

The Practice Learning Series will resume in early February 2023.

GCCA+ SUPA 4th Steering Committee Meeting 28-29 September

The resource team from Cook Islands, Federated States of Micronesia, Palau and Tonga shared feedback on their case of advancing use of the light version of impact methodology in tracking adaptation impact.

Read more at: <https://www.sprep.org/news/countries-highlight-progress-during-gcca-supu-steering-committee-meeting>



Country missions:

Palau, 18 - 30 July,

Tonga, 12 - 26 September

Preparation is underway for the Regional Applied Training on the impact analysis methodology and linked database, scheduled to be held in Fiji from 21- 30 November, 2022. Impact database will also be launched as part of the training in 28-29 November.