



1 February 2023

PRELIMINARY SATELLITE-DERIVED underwater volcano



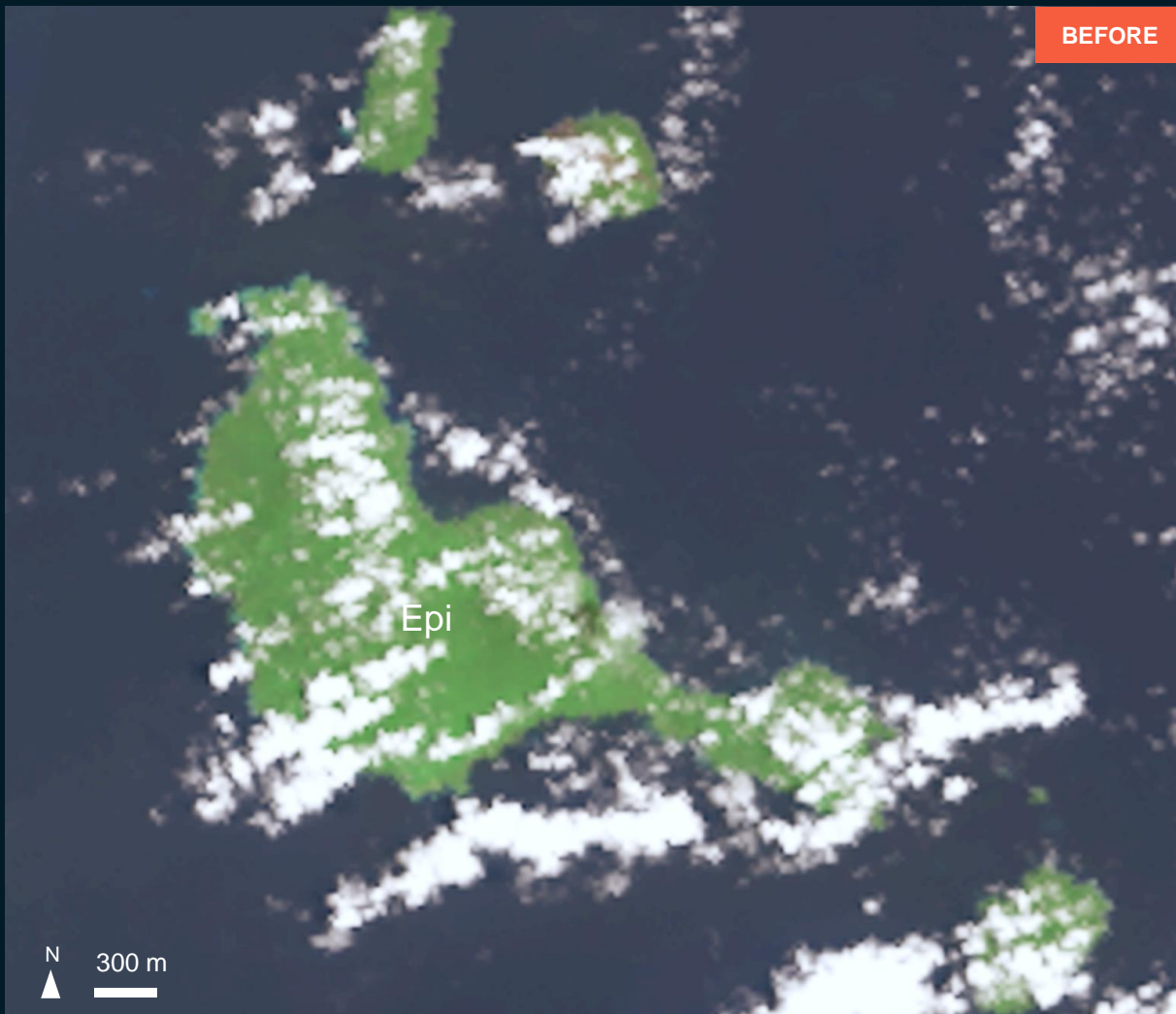
East Epi Submarine Volcano, Vanuatu

 Status: Potentially ash cloud observed

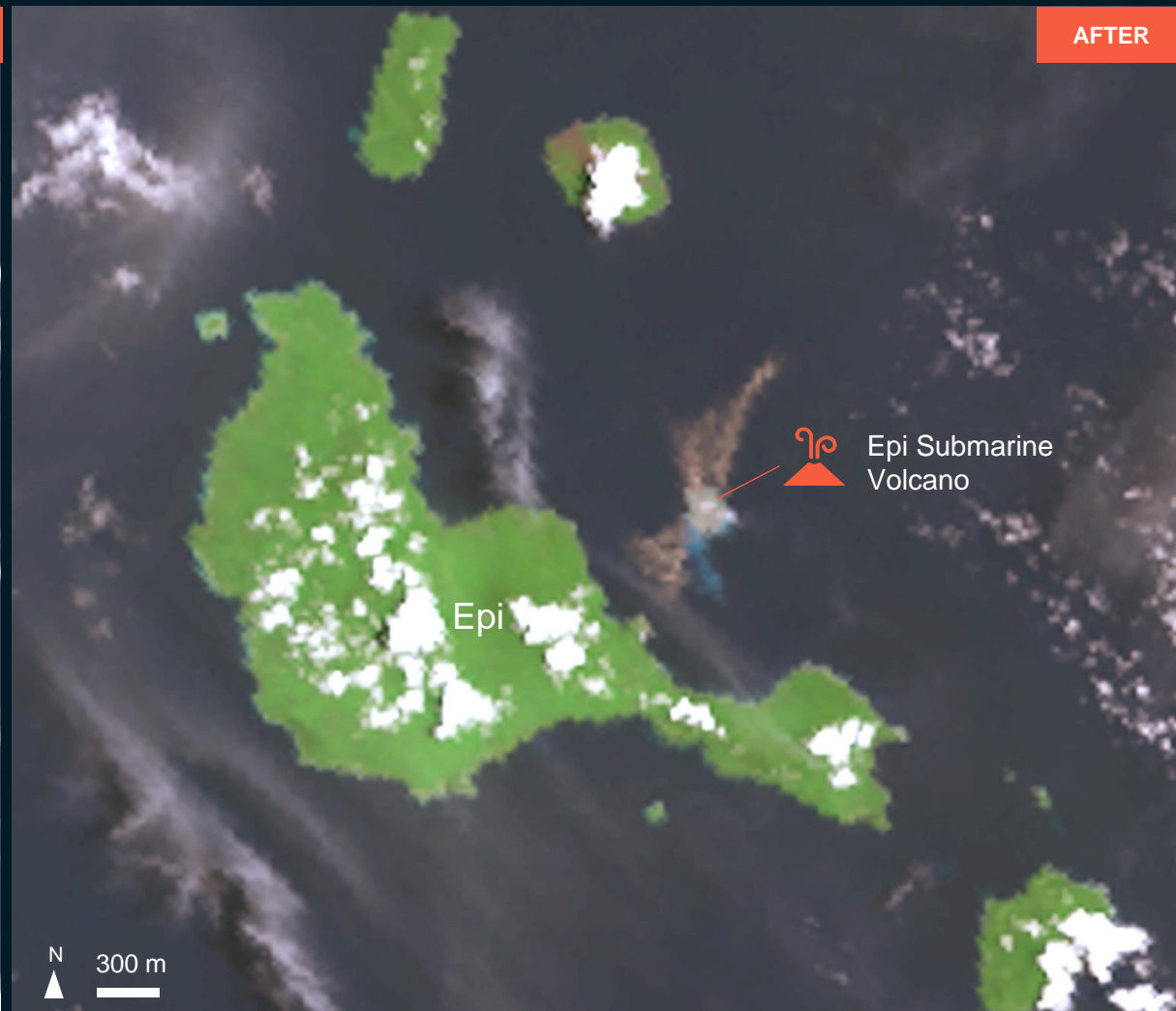
 Further action(s): continue monitoring

EAST EPI SUBMARINE VOLCANO AND SURROUNDING

Image center:
168°18'21.535"E
16°39'23.403"S

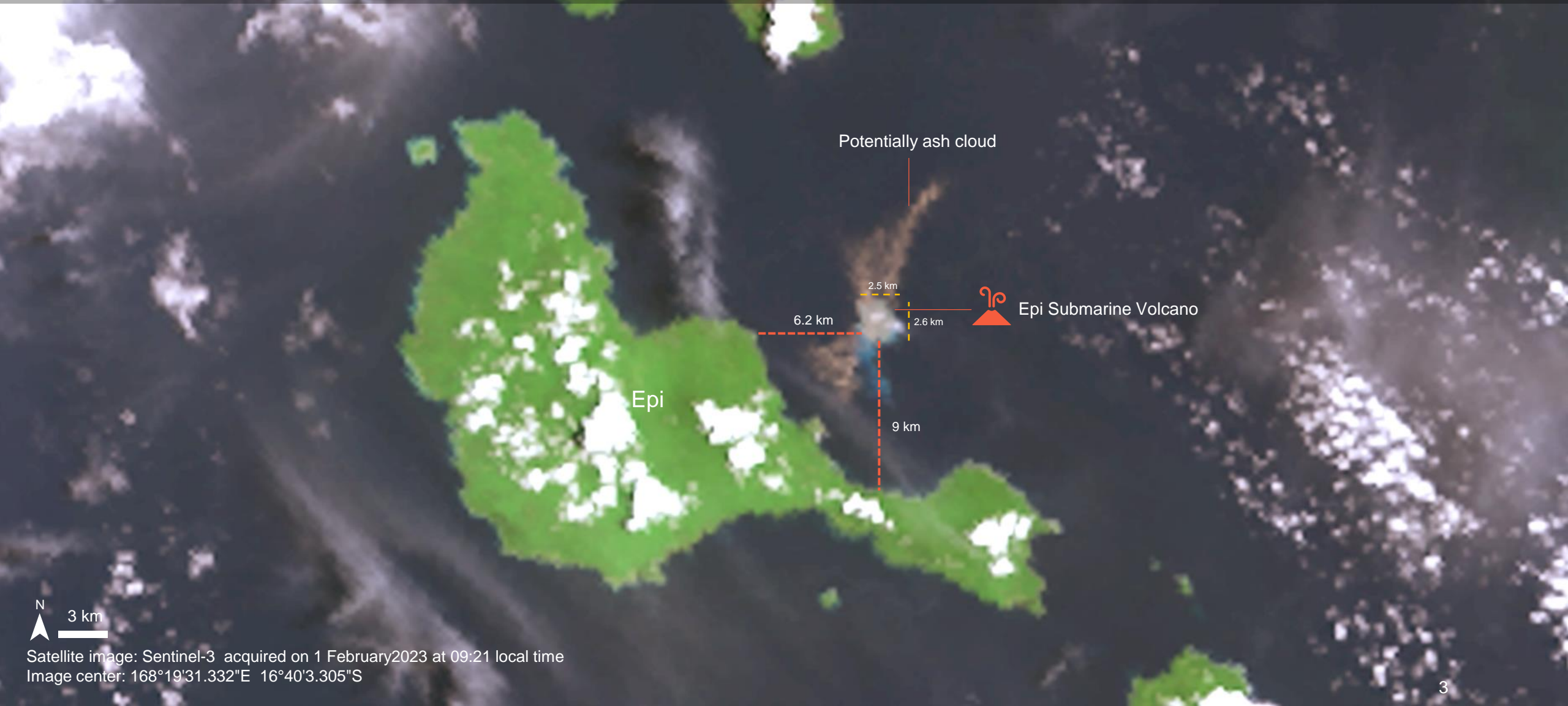


Sentinel-3 / 28 January 2023



Sentinel-3 / 1 February 2023

EAST EPI SUBMARINE VOLCANO AND SURROUNDING



Satellite image: Sentinel-3 acquired on 1 February 2023 at 09:21 local time
Image center: 168°19'31.332"E 16°40'3.305"S

COPYRIGHTS AND SOURCES

Data sources:

(1) Satellite Images (Post-event)

Satellite Data : Sentinel-3

Imagery Dates : 1 February 2023 at 09:21 local time

Resolution: 300 m

Copyright: Contains modified Copernicus Sentinel data [2023]

Source: ESA

(2) Satellite Images (Pre-event)

Satellite Data : Sentinel-2

Imagery Dates : 28 February 2023 at 09:21 local time

Resolution: 300 m

Copyright: Contains modified Copernicus Sentinel data [2023]

Source: ESA

(3) Ancillary data

Analysis: United Nations Satellite Centre (UNOSAT)

Production: United Nations Satellite Centre (UNOSAT)